



**V**AQUITA  
APPAREL

**2022**

THE COLLECTION

# 2022

## THE COLLECTION

- Largest ever sustainable & organic range
- Corporate, workwear & uniform solutions
- Fashion & retail-ready styles
- Promotional & merchandising options
- Sports & teamwear
- Varsity, schoolwear, accessories & more...

We're happy to say that this year we have printed our brochures using FSC® certified paper.



## Contents

T-Shirts

1 - 77



SS621 [614300]



SS721 P153



SS621B P631



SS721B Online



**SS621 Fruit of the Loom Iconic 150 T-Shirt**

100% ringspun combed cotton.\*  
Soft touch. Slim fashion fit.  
1x1 ribbed collar.  
Taped neck.  
Tubular body.  
Twin needle sleeves and hem.  
Tear out label.

Weight: White 140 gsm, Cols 145-150 gsm

<b>Size:</b>	S	M	L	XL
<b>Chest (to fit):</b>	35/37	38/40	41/43	44/46
<b>Size:</b>	XXL	3XL	4XL	5XL
<b>Chest (to fit):</b>	47/49	50/52	53/55	56/58

\*Heather grey 97% cotton/3% polyester.  
\*\*Athletic heather 90% cotton/10% recycled polyester.  
▲All other heathers 52% cotton/48% polyester.  
■Available in 4XL.  
°Available in 4XL and 5XL.



GD01 [64000]



GD72 P153



GD01B P631



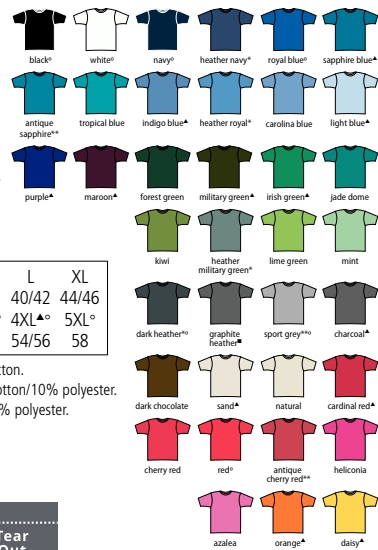
**GD01 Gildan SoftStyle® Ringspun T-Shirt**

100% ringspun cotton.\*  
Ribbed collar.  
Taped neck and shoulders.  
Tubular body.  
Twin needle sleeves and hem.  
Tear out label.

Weight: White 144 gsm,  
Cols 153 gsm

<b>Size:</b>	S	M	L	XL
<b>Chest (to fit):</b>	34/36	38	40/42	44/46
<b>Size:</b>	XXL	3XL	4XL	5XL
<b>Chest (to fit):</b>	48/50	52	54/56	58

\*Heathers 65% polyester/35% cotton.  
\*\*Sport grey and antiques 90% cotton/10% polyester.  
■Graphite heather 50% cotton/50% polyester.  
▲Available in 3XL and 4XL.  
°Available in 3XL, 4XL and 5XL.



# 002 STANDARD WEIGHT T-SHIRTS

T-SHIRTS

11380

**SOL'S**<sup>®</sup>

the fair spirit



01825 P152



11970 P631



11981 Online



## 11380 SOL'S

### Regent T-Shirt

100% ringspun semi-combed cotton.\*

Ribbed collar.

Taped neck.

Tubular body.

Twin needle stitching.

Weight: 150 gsm

<b>Size:</b>	XXS <sup>■</sup>	XS	S	M	L	XL	XXL	3XL <sup>▲</sup>	4XL <sup>°</sup>
<b>Chest (to fit):</b>	32/34	35/36	36/38	38/40	41/42	43/44	45/47	47/49	50/52

\*Grey marl 85% cotton/15% viscose.

\*\*Ash 98% cotton/2% viscose.

■ Available in XXS.

▲ Available in 3XL.

° Available in 4XL.





SS12 [610820]



SS12B P152



SS12B P632

**SS12 Fruit of the Loom Original T-Shirt**

100% cotton.\*  
Ribbed collar.  
Taped neck.  
Tubular body.  
Twin needle stitching.  
Cut out label.



Weight: White 140 gsm, Cols 145 gsm

Size:	S	M	L	XL
Chest (to fit):	35/37	38/40	41/43	44/46
Size:	XXL	3XL	4XL**	5XL**
Chest (to fit):	47/49	50/52	53/55	56/58

\*Heather grey 97% cotton/3% polyester.  
\*\*Available in 4XL and 5XL.



**GD13 Gildan SoftStyle® EZ Print T-Shirt**

100% ringspun combed cotton.  
Enzyme washed. Modern classic fit.  
Seamed collar. Taped neck and shoulders.  
High stitch density for smoother print surface.  
Twin needle sleeves and hem. Tear out label.



Weight: 150 gsm

Size:	S	M	L	XL	XXL	3XL
Chest (to fit):	34/36	38	40/42	44/46	48/50	52



Sedex®



GD13 [64EZO]



**Just Ts**®  
AWDis

NEW STYLE

IDEAL FOR BRANDING  
Great for SCREENPRINT  
BRANDING



**JT022**  
AWDis Tie-Dye T-Shirt  
P129

# 004 STANDARD WEIGHT T-SHIRTS

T-SHIRTS

**NX3600**



**NEXT LEVEL**  
APPAREL



NX3900 P154



NX3310 P632



**NX3600 Next Level**  
**Unisex Crew Neck T-Shirt**

100% ringspun combed cotton.\*  
1x1 baby ribbed collar.  
Taped neck and shoulders.  
Side seams.  
Twin needle sleeves and hem.  
Tear out label.

Weight: 145 gsm

<b>Size:</b>	XS	S	M	L	XL	XXL	3XL	4XL**
<b>Chest (to fit):</b>	33/35	35/38	38/41	43/44	45/48	48/52	53.5/56	60

\*Heather grey 90% cotton/10% polyester.  
\*\*Available in 4XL.



CV3001

BELLA+CANVAS



BL6004 P154



CV3001Y P632



CV3001T P656



CV3001B P656



**CV3001 Bella+Canvas**  
**Unisex Crew Neck T-Shirt**

100% airlume combed ringspun cotton.  
Retail fit.  
Single jersey.  
Ribbed collar.  
Shoulder to shoulder taping.  
Twin needle stitching.  
Tear out label.

Weight: 145 gsm

<b>Size:</b>	XS	S	M	L	XL	XXL	3XL*	4XL*
<b>Chest (to fit):</b>	31/34	34/37	38/41	42/45	46/49	50/53	54/57	58/61

\*Available in 3XL and 4XL.



# 006 STANDARD WEIGHT T-SHIRTS

T-SHIRTS

JT100

JustTs<sup>®</sup>  
AWDis



JT100F P154



## JT100 AWDIs

### The 100 T-Shirt

100% combed ringspun cotton.\*

Modern fit.

Ribbed collar.

Taped neck.

Side seams.

Twin needle sleeves and hem.

Unbranded size label at neckline.

Weight: 140 gsm

Size:	S	M	L	XL	XXL	3XL	4XL**	5XL**	6XL**
Chest (to fit):	36	40	44	48	52	56	60	64	68

\*Heather grey 90% cotton/10% viscose.

\*\*Available in 4XL, 5XL and 6XL.

ATM-APPROVED  
VEGAN

No Label







T5000



T5001 P155



**T5000 Tee Jays**

**Luxury Cotton T-Shirt**

100% ringspun combed cotton.  
In transition to using organic cotton. Enzyme washed.  
Fitted style. Narrow ribbed collar with elastane.  
Taped neck and shoulders. Side seams.  
Top stitched sleeves and hem.



Weight: 160 gsm

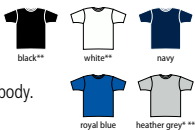
Size:	S	M	L	XL	XXL	3XL
Chest (to fit):	36/38	38/40	41/42	43/44	45/47	47/49



**SS625 Fruit of the Loom**

**Iconic 165 Classic T-Shirt**

100% combed ringspun cotton.\*  
Soft touch. 1x1 Lycra® ribbed collar. Taped neck. Tubular body.  
Twin needle sleeves and hem. Tear out label.



Weight: White 160 gsm, Cols 165 gsm

Size:	S	M	L	XL
Chest (to fit):	35/37	38/40	41/43	44/46
Size:	XXL	3XL	4XL**	5XL**
Chest (to fit):	47/49	50/52	53/55	56/58



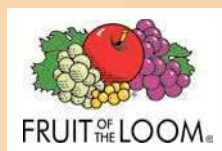
\*Heather grey 97% cotton/3% polyester.  
\*\*Available in 4XL and 5XL.



SS625 [614380]



SS6 [610360]



SS77 P155



SS6B P633



SS77B Online

**SS6 Fruit of the Loom Value T-Shirt**

100% cotton.\*  
Cotton/Lycra® ribbed collar.  
Taped neck.  
Tubular body (4XL and 5XL have side seams).  
Twin needle stitching.  
Cut out label.

Weight: White 160 gsm, Cols 165 gsm

Size:	S	M	L	XL
Chest (to fit):	35/37	38/40	41/43	44/46
Size:	XXL	3XL	4XL▲	5XL▲
Chest (to fit):	47/49	50/52	53/55	56/58

\*Ash 99% cotton/1% polyester.  
\*\*Heather grey 97% cotton/3% polyester.  
■Dark heather, heather royal, heather green, heather navy, heather red, heather purple and heather burgundy 50% cotton/50% polyester.  
▲Available in 4XL and 5XL.



# SOL'S®

the fair spirit

**NEW**

03805 **SOL'S Unisex  
Odyssey Recycled T-Shirt**

P29

**55% recycled cotton  
45% recycled polyester  
Knitted with fabric  
wastage**





NX6410



NX6200



**NX6410 Next Level Unisex Sueded Crew Neck T-Shirt**

60% ringspun combed cotton/40% polyester. Soft touch. 1x1 baby ribbed collar. Taped neck and shoulders. Side seams. Twin needle sleeves and hem.

Weight: 145 gsm



Size:	XS	S	M	L
Chest (to fit):	33/35	35/38	38/41	43/44
Size:	XL	XXL	3XL	
Chest (to fit):	45/48	48/52	53.5/56	

**NX6200 Next Level Poly/Cotton Crew Neck T-Shirt**

65% polyester/35% ringspun combed cotton. Self fabric collar with front cover stitch. Taped neck and shoulders. Side seams. Twin needle sleeves and hem.

Weight: 120 gsm



Size:	XS	S	M	L
Chest (to fit):	33/35	35/38	38/41	43/44
Size:	XL	XXL	3XL	
Chest (to fit):	45/48	48/52	53.5/56	

**CN226 Canterbury Club Plain T-Shirt**

60% cotton/40% polyester. Ribbed collar. Taped neck. Forward facing shoulder seams. Twin needle stitching. Branding on left sleeve.

Weight: 160 gsm



Size:	S	M	L	XL	XXL	3XL
Chest (to fit):	36	40	43	46	49	52



CN226



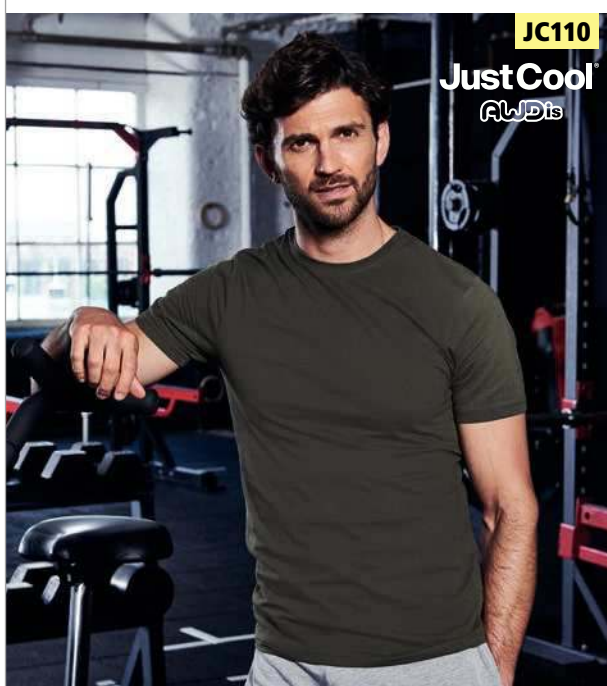
**JC110 AWDIs Cool Urban Fitness T-Shirt**

60% cotton/40% polyester. UPF 40+ UV protection. Quick drying with inherent stretch properties. Active fit. Self fabric collar. Taped neck. Twin needle stitching. Tear out label.

Weight: 160 gsm



Size:	XS	S	M	L	XL	XXL
Chest (to fit):	35/37	37/39	39/41	41/43	43/45	45/48



JC110





FRUIT OF THE LOOM®

Garments made by  
Fruit of the Loom are  
made the right way.  
The Fruit Way.



SS621  
Iconic 150 T-Shirt  
P103

**SS721B**  
**Girls Iconic 150 T-Shirt**  
 Online

**SS621B**  
**Kids Iconic 150 T-Shirt**  
 P631



At Fruit of the Loom we continue to do what we can to help create a better future for everyone, by delivering our outstanding range of premium products, ethically and responsibly. Produced in our own manufacturing facilities in Morocco to service the European market.



# 012 HEAVY T-SHIRTS

T-SHIRTS

**RX151**



## **RX151 Pro RTX** **Pro T-Shirt**

50% cotton/50% polyester.  
Ribbed collar.  
Shoulder to shoulder taping.  
Side seams.  
Twin needle stitching.  
60°C wash.

Weight: 180 gsm

<b>Size:</b>	XS	S	M	L	XL
<b>Chest (to fit):</b>	34	36	40	44	48
<b>Size:</b>	XXL	3XL	4XL	5XL	6XL*
<b>Chest (to fit):</b>	52	56	60	62	64



\* Available in 6XL.

**010M**



## **010M Russell**

### **Heavyweight T-Shirt**

100% ringspun combed cotton.\*  
Twin needle coverseamed ribbed neck trim.  
Self fabric taped neck. Double layer yoke and shoulder panels for durability. Twin needle armholes. Twin needle sleeves and hem. 60°C domestic wash.

Weight: 180 gsm

<b>Size:</b>	XS	S	M	L	XL	XXL	3XL	4XL
<b>Chest (to fit):</b>	34/36	36/38	38/40	40/42	42/44	44/46	46/48	48/50

\*Light oxford 93% cotton/7% viscose.



## **GD07 Gildan**

### **DryBlend® T-Shirt**

50% cotton/50% polyester.  
Moisture wicking fabric. Classic fit. Ribbed collar.  
Taped neck and shoulders.  
Twin needle sleeves and hem.  
Tear out label (some colours in transition).

Weight: White 176 gsm, Cols 186 gsm

<b>Size:</b>	S	M	L	XL	XXL
<b>Chest (to fit):</b>	34/36	38/40	42/44	46/48	50/52



Sedex®



## **GD07 [8000]**

**GILDAN®**  
*DryBlend®*



GD05 [5000]

**GILDAN**  
Heavy Cotton™

T-SHIRTS



GD95 P156



GD05B P634



GD05P Online

**GD05 Gildan Heavy Cotton™ T-Shirt**

100% cotton.\*  
Ribbed collar.  
Taped neck and shoulders.  
Tubular body.  
Twin needle sleeves and hem.  
Tear out label.

Weight: White 170 gsm, Cols 180 gsm

<b>Size:</b>	S	M	L	XL	XXL	3XL <sup>■</sup>	4XL <sup>°</sup>	5XL <sup>°</sup>
<b>Chest (to fit):</b>	34/36	38/40	42/44	46/48	50/52	54/56	58/60	62/64



\*Antiques and sport grey 90% cotton/10% polyester.  
 \*\*Ash 99% cotton/1% polyester.  
 †Midnight, blackberry, dark heather, heather sapphire, graphite heather, lilac, russet, sunset and tweed 50% cotton/50% polyester.  
 ■Available in 3XL.  
 °Available in 3XL, 4XL and 5XL.



Sedex

Tear Out

# 014 HEAVY T-SHIRTS

T-SHIRTS

180M



180B P634



## 180M Russell Classic Ringspun T-Shirt

100% ringspun cotton.\*  
Front cover seaming on collar. 1x1 ribbed knit collar. Shoulder to shoulder taping. Tubular body. Twin needle stitching.

Weight: White 175 gsm, Cols 180 gsm

Size:	XS**	S	M	L
Chest (to fit):	34/36	36/38	38/40	40/42
Size:	XL	XXL	3XL▲	4XL▲
Chest (to fit):	42/44	44/46	46/48	48/50

\*Light oxford 93% cotton/7% viscose.  
\*\*Not available in XS.

▲Available in 3XL and 4XL.



K500

KUSTOM KIT.



## K500 Kustom Kit Hunky® Superior T-Shirt

100% combed cotton.\*  
1x1 ribbed collar. Taped neck. Reinforced shoulder seams. Twin needle front neck, sleeves and hem.



Weight: 180 gsm

Size:	S	M	L	XL	XXL
Chest (to fit):	36/38	40	42	44	46/48
Size:	3XL	4XL**	5XL**	6XL**	
Chest (to fit):	50/52	54/56	58/60	62/64	

\*Heather grey 90% cotton/10% viscose.  
\*\*Available in 4XL, 5XL and 6XL.



## SA101 Fruit of the Loom Heavy Cotton T-Shirt

100% cotton.\*  
Ribbed collar. Taped neck. Tubular knit. Twin needle stitching on sleeves and hem. Cut out label.



Weight: White 185 gsm, Cols 195 gsm

Size:	S	M	L	XL	XXL	3XL
Chest (to fit):	35/37	38/40	41/43	44/46	47/49	50/52

\*Heather grey 97% cotton/3% polyester.



SA101 [612120]





11500

SOL'S®  
the fair spirit

T-SHIRTS



11502 P157



11770 P634

**11500 SOL'S Imperial Heavy T-Shirt**

100% ringspun semi-combed cotton.\*  
Ribbed collar.  
Taped neck.  
Tubular body.  
Twin needle stitching.

Weight: 190 gsm

Size:	XS <sup>▲</sup>	S	M	L	XL	XXL	3XL <sup>◼</sup>	4XL <sup>■</sup>	5XL <sup>■</sup>
Chest (to fit):	35/36	36/38	38/40	41/42	43/44	45/47	47/49	50/52	53/55

\*Ash 98% cotton/2% viscose.  
\*\*Grey marl 85% cotton/15% viscose.  
▲Available in XS.  
°Available in 3XL.  
■Available in 3XL, 4XL and 5XL.



# 016 T-SHIRTS

T-SHIRTS



T580 Ladies Interlock T-Shirt P157



T1100 Power T-Shirt P25



## everyday essentials

Our collection has been designed with focus on quality and stunning detailing. The luxury tees are made from premium long-fibre cotton and have a shaped fit on the sleeves and shoulders. If you're looking for a powerful promotional style, the T1100 Power T-Shirt is ideal.



T520 Interlock T-Shirt P121



JT009

JustTs®  
AWDis



**JT009 AWDIs**  
**Unisex Oversize 100 T-Shirt**

100% combed ringspun cotton.  
Oversized fit. Ribbed crew neck. Taped neck. Side seams.  
Twin needle stitching. Unbranded size label at neckline.

Weight: 190 gsm



Size:	S	M	L	XL	XXL
Chest (to fit):	36	40	44	48	52

**T8000 Tee Jays**  
**Sof T-Shirt**

100% ringspun combed cotton.\*  
Ribbed collar with elastane. Taped neck and shoulders. Tubular body (3XL to 5XL have side seams). Twin needle sleeves and hem. 60°C wash.

Weight: 185 gsm



Size:	S	M	L	XL
Chest (to fit):	36/38	38/40	41/42	43/44
Size:	XXL	3XL	4XL**	5XL**
Chest (to fit):	45/47	47/49	50/52	53/55

\*Heather grey 85% cotton/15% viscose.

\*\*Available in 4XL and 5XL.

T8000

TEE JAYS®



T8050 P156



GD08 [4100]

GILDAN®  
PREMIUM  
Cotton®



GD90 P156

**GD08 Gildan**  
**Premium Cotton® T-Shirt**

100% ringspun cotton.\*  
Set in ribbed collar. Taped neck and shoulders. Tubular knit. Twin needle sleeves and hem. Tear out label.

Weight: White 180 gsm, Cols 185 gsm



Size:	S	M	L	XL
Chest (to fit):	34/36	38/40	42/44	46/48
Size:	XXL	3XL**	4XL**	
Chest (to fit):	50/52	54/56	58/60	

\*Sport grey 90% cotton/10% polyester.

\*\*Available in 3XL and 4XL.



# 018 HEAVY T-SHIRTS

T-SHIRTS

GD02 [2000]

**GILDAN®**  
Ultra Cotton™



**GD02 Gildan Ultra Cotton™ T-Shirt**

100% cotton.\*  
Pre-shrunk.  
Ribbed collar.  
Taped neck and shoulders.  
Twin needle sleeves and hem.  
Tubular body.  
Tear out label (some colours in transition).

Weight: White 193 gsm,  
Cols 203 gsm

<b>Size:</b>	S	M	L
<b>Chest (to fit):</b>	34/36	38/40	42/44
<b>Size:</b>	XL	XXL	3XL
<b>Chest (to fit):</b>	46/48	50/52	54/56
<b>Size:</b>	4XL	5XL	
<b>Chest (to fit):</b>	58/60	62/64	

\*Dark heather, heather cardinal, heather navy, s orange and safety green 50% cotton/50% polyester.  
\*\*Ash 99% cotton/1% polyester.  
▲Sport grey 90% cotton/10% polyester.  
■Available in 3XL, 4XL and 5XL.



Sedex

Tear Out

SS620 [614220]



SS720 P157



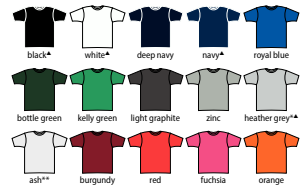
**SS620 Fruit of the Loom Ringspun Premium T-Shirt**

100% ringspun combed cotton.\*  
Soft touch. Cotton/Lycra® ribbed collar.  
Shoulder to shoulder self fabric taping.  
Tubular body. Cut out label. 60°C wash.

Weight: White 190 gsm, Cols 195 gsm

<b>Size:</b>	S	M	L	XL
<b>Chest (to fit):</b>	35/37	38/40	41/43	44/46
<b>Size:</b>	XXL	3XL	4XL	5XL
<b>Chest (to fit):</b>	47/49	50/52	53/55	56/58

\*Heather grey 97% cotton/3% polyester.  
\*\*Ash 99% cotton/1% polyester.  
▲Available in 4XL and 5XL.



Cut Out

**GD21 Gildan Hammer Heavyweight T-Shirt**

100% ringspun combed cotton.\*  
Seamless ribbed collar. Taped neck and shoulders.  
Tubular body. Twin needle sleeves and hem.  
Tear out label.

Weight: White 193 gsm, Cols 203 gsm

<b>Size:</b>	S	M	L	XL
<b>Chest (to fit):</b>	34/36	38/40	42/44	46/48
<b>Size:</b>	XXL	3XL	4XL	
<b>Chest (to fit):</b>	50/52	54/56	58/60	

\*Graphite heather 50% cotton/50% polyester.  
\*\*Sport grey 90% cotton/10% polyester.



Sedex

Tear Out

GD21 [H000]



Sedex

Tear Out



T520



T580 P157

NEW COLOURS

**T520 Tee Jays Interlock T-Shirt**

100% ringspun combed cotton. In transition to using organic cotton. Enzyme and silicone washed. Fitted style. Narrow ribbed collar. Side seams. Side vents. Twin needle sleeves and hem. 60°C wash.

Weight: 220 gsm

Size:	S	M	L	XL
Chest (to fit):	36/38	38/40	41/42	43/44
Size:	XXL	3XL	4XL*	5XL*
Chest (to fit):	45/47	47/49	50/52	53/55

\* Available in 4XL and 5XL.



SS10 [610440]



**SS10 Fruit of the Loom Super Premium T-Shirt**

100% cotton.\* Cotton/Lycra® collar for improved shape retention. Shoulder to shoulder taping. Twin needle stitching on neck, sleeves and hem. Cut out label. 60°C wash.

Weight: White 190 gsm, Cols 205 gsm

Size:	S	M	L	XL
Chest (to fit):	35/37	38/40	41/43	44/46
Size:	XXL	3XL	4XL▲	5XL▲
Chest (to fit):	47/49	50/52	53/55	56/58

\*Ash 99% cotton/1% polyester.

\*\*Heather grey 97% cotton/3% polyester.

▲Available in 4XL and 5XL.



**215M Russell Classic Heavyweight Combed Cotton T-Shirt**

100% ringspun combed cotton. Front cover seaming on collar. Shoulder to shoulder taping. Tubular body. Twin needle sleeves and hem.

Weight: White 210 gsm, Cols 215 gsm

Size:	S	M	L	XL	XXL
Chest (to fit):	36/38	38/40	40/42	42/44	44/46



215M



# 020 SLIM FIT T-SHIRTS

T-SHIRTS

10553

**SOL'S**  
the fair spirit



02758 Online



01183 P633



**10553 SOL'S  
Regent Fit T-Shirt**

100% ringspun semi-combed cotton.\*  
Fitted cut.  
Ribbed collar.  
Taped neck.  
Twin needle stitching.  
Unbranded size label at neckline.

Weight: 150 gsm

Size:	XS	S	M
Chest (to fit):	35/36	36/38	38/40
Size:	L	XL	XXL
Chest (to fit):	41/42	43/44	45/47

\*Grey marl 85% cotton/15% viscose.

\*\*Charcoal marl, heather oxblood, heather denim, heather khaki, heather pink and heather sky 60% cotton/40% polyester.



02855

**SOL'S**  
the fair spirit



**02855 SOL'S  
Martin T-Shirt**

100% combed ringspun cotton.\*  
Enzyme washed. Fitted style. Ribbed collar.  
Taped neck. Side seams.  
Twin needle stitching.  
Unbranded size label at neckline.

Weight: 155 gsm

Size:	XS	S	M	L	XL	XXL	3XL
Chest (to fit):	35/36	36/38	38/40	41/42	43/44	45/47	47/49

\*Grey marl 85% cotton/15% viscose.



**K507 Kustom Kit  
Fashion Fit Cotton T-Shirt**

100% ringspun combed cotton.\*  
Slim fit. 1x1 ribbed collar. Self fabric taped neck and shoulders.  
Topstitched front neck. Twin needle sleeves and hem.  
Tear out label.

Weight: 140 gsm

Size:	XS	S	M	L
Chest (to fit):	32/34	36/38	40	42
Size:	XL	XXL	3XL	
Chest (to fit):	44	46/48	50/52	

\*Heather grey and dark grey marl 85% cotton/15% viscose.



Sedex®

**T8005 Tee Jays  
Fashion Sof T-Shirt**

100% ringspun combed cotton.  
Fitted style. Ribbed collar with elastane. Taped neck and shoulders.  
Side seams. Twin needle sleeves and hem. 60°C wash.

Weight: 185 gsm

Size:	S	M	L	XL	XXL	3XL
Chest (to fit):	36/38	38/40	41/42	43/44	45/47	47/49



K507

KUSTOM KIT.



T8005

**TEE JAYS**





T400

TEE JAYS

NEW

**T400 Tee Jays**

**Stretch T-Shirt**

90% ringspun combed cotton/10% elastane. Enzyme and silicone wash. Double pre-shrunk. Slim fit. Narrow ribbed collar with elastane. Taped neck and shoulders. Side seams. Twin needle stitching.

Weight: 195 gsm

Size:	S	M	L	XL	XXL	3XL
Chest (to fit):	36/38	38/40	41/42	43/44	45/47	47/49



**10580 SOL'S**

**Imperial Fit T-Shirt**

100% ringspun semi-combed cotton.\* Fitted cut. Ribbed collar. Taped neck. Twin needle stitching. Unbranded size label at neckline.

Weight: 190 gsm

Size:	S	M	L	XL	XXL
Chest (to fit):	36/38	38/40	41/42	43/44	45/47



\*Grey marl 85% cotton/15% viscose.  
\*\*Charcoal marl 60% cotton/40% polyester.

No Label

10580

SOL'S  
the fair spirit



02080 P156



SF121

SF



SK121 P155



SM121 P633

**SF121 SF Men**

**Feel Good Stretch T-Shirt**

96% cotton/4% elastane single jersey.\* Stretch fabric for a modern fit. Soft touch. Enzyme washed. Taped neck. Soft stretchy ribbed collar. Side seams. Longer length. Tear out label.

Weight: 165 gsm

Size:	XS*	S	M
Chest (to fit):	34/36	36/38	38/40
Size:	L	XL	XXL
Chest (to fit):	42	44/46	48



PRE-APPROVED VEGAN Sedex

\*Heather red 90% cotton/6% viscose/4% elastane.  
\*\*Heather charcoal 60% cotton/36% polyester/4% elastane.  
†Heather blue and heather navy 65% polyester/30% cotton/5% elastane.  
‡Heather grey 81% cotton/15% viscose/4% elastane.  
\*Available in XS.

Tear Out

KB356

**KARIBAN**

**KB356 Kariban**

**Crew Neck T-Shirt**

100% combed cotton.\* Slim fit. Enzyme washed. Self fabric collar. Taped neck. Twin needle stitching.

Weight: 180 gsm

Size:	S	M	L
Chest (to fit):	33/35	37	39
Size:	XL	XXL	3XL
Chest (to fit):	41	43/46	47

\*Oxford grey 90% cotton/10% viscose.



KB380 Online

**ANTHEM**®

**AM10**  
Anthem Organic T-Shirt

P25



**COOL  
STYLE**

**T5062**

**TEE JAYS**



T5063 P161



**T5062 Tee Jays**  
**Roll-Up T-Shirt**



100% ringspun combed cotton.\*  
Relaxed fashion fit. Narrow ribbed wide neckline. Taped neck and shoulders.  
Roll-up sleeves with bar tacks. Side seams. Twin needle hem.

Weight: 160 gsm

<b>Size:</b>	S	M	L	XL	XXL	3XL
<b>Chest (to fit):</b>	36/38	38/40	41/42	43/44	45/47	47/49

\*Heather grey 85% cotton/15% viscose.

**SF254 SF**

**Unisex Scoop Neck T-Shirt**



60% cotton/40% polyester.  
Single jersey. Regular fit. Raw edge scoop neckline. Taped neck. Roll-up sleeves  
with bar tacks. Side seams. Twin needle curved hem. Tear out label.

Weight: 140 gsm

**ATM-APPROVED**  
**{ VEGAN }**

**Sedex**

**Tear  
Out**

<b>Size:</b>	XXS	XS	S	M	L	XL	XXL
<b>Chest (to fit):</b>	32/34	34/36	36/38	38/40	42	44/46	48

**SF254**







**NX3602**

**NL** NEXT LEVEL APPAREL

**NX3602 Next Level Long Body Cotton T-Shirt**

100% ringspun combed cotton.\*  
1x1 baby ribbed collar. Taped neck and shoulders.  
Side seams. Longer length. Twin needle sleeves and hem.  
Curved drop hem. Tear out label.

Weight: 145 gsm

Size:	S	M	L	XL	XXL
Chest (to fit):	35/38	38/41	43/44	45/48	48/52

\*Heather grey 90% cotton/10% polyester.



**CV3006**

**BELLA+CANVAS**

**CV3006 Bella+Canvas Long Body Urban T-Shirt**

100% airlume combed ringspun cotton.\*  
Retail fit. Side seams. Longer length.  
Twin needle sleeves and hem.  
Curved drop hem. Tear out label.

Weight: 142 gsm

Size:	S	M	L	XL	XXL
Chest (to fit):	34/37	38/41	42/45	46/49	50/53

\*Heathers 52% airlume combed ringspun cotton/48% polyester.



**JT008 AWDIs Westcoast Longline T-Shirt**

50% polyester/25% cotton/25% viscose.  
Modern fit. Ribbed collar. Taped neck.  
Longer length. Twin needle sleeves and hem.  
Curved drop hem. Unbranded size label.

Weight: 160 gsm

Size:	S	M	L	XL	XXL
Chest (to fit):	36	40	44	48	52



**SF258 SF Men Longline Dipped Hem T-Shirt**

100% cotton.\*  
Single jersey. Regular fit. Stretch ribbed collar. Side seams.  
Extra long length. Curved drop hem. Twin needle stitching. Tear out label.

Weight: 140 gsm

Size:	S	M	L	XL	XXL
Chest (to fit):	36/38	38/40	42	44/46	48

\*Heather charcoal 60% cotton/40% polyester.



**JT008**

**Just Ts**  
AWDIs



**SF258**



# 024 CVC T-SHIRTS

T-SHIRTS

**NX6210**



**NEXT LEVEL**  
APPAREL



NX6610 P159



NX3312 Online



**NX6210** Next Level  
**Unisex CVC Crew Neck T-Shirt**

60% ringspun combed cotton/40% polyester.  
1x1 baby ribbed collar.  
Taped neck and shoulders.  
Side seams.  
Twin needle sleeves and hem.  
Tear out label.

Weight: 145 gsm

<b>Size:</b>	XS	S	M	L	XL	XXL	3XL	4XL*
<b>Chest (to fit):</b>	33/35	35/38	38/41	43/44	45/48	48/52	53.5/56	60

\*Available in 4XL.



Tear Out

CVC3001

BELLA+CANVAS

T-SHIRTS



BL6004 P154



CV3001Y P632



CV3001T P656



CV3001B P656



**CVC3001 Bella+Canvas Unisex Heather CVC T-Shirt**

52% airlume combed ringspun cotton/48% polyester.\*  
Retail fit.  
Single jersey.  
Ribbed collar.  
Shoulder to shoulder taping.  
Twin needle stitching.  
Tear out label.

Weight: 145 gsm

Size:	XS	S	M	L	XL	XXL
Chest (to fit):	31/34	34/37	38/41	42/45	46/49	50/53

\*Athletic heather and black heather 90% cotton/10% polyester.  
\*\*Heather prism colours 99% cotton/1% polyester.



# 026 FABRIC EFFECT T-SHIRTS

T-SHIRTS

**K504**

**KUSTOM KIT.**



K754 Online



## K504 Kustom Kit Superwash® 60°C T-Shirt

65% polyester/35% cotton.\*  
Fashion fit. Ribbed collar. Self fabric taped neck and shoulders. Twin needle sleeves and hem. Tear out label. Superwash® 60°C.

Weight: 160 gsm

Size:	XS	S	M	L
Chest (to fit):	32/34	36/38	40	42
Size:	XL	XXL	3XL	
Chest (to fit):	44	46/48	50/52	

\*Black melange 50% cotton/50% polyester.



Sedex®

## 165M Russell HD T-Shirt

65% polyester/35% ringspun combed cotton.  
Slim fit. Shoulder to shoulder taping. Side seams. Longer length. Twin needle sleeves and hem. Removable adhesive neck label. Designed for a range of print processes.

Weight: White 155 gsm, Cols 160 gsm

Size:	XS	S	M	L	XL	XXL	3XL
Chest (to fit):	34/36	36/38	38/40	40/42	42/44	44/46	46/48



Sticker

**165M**



165F Online



165B Online



**01182**

**SOL'S**  
the fair spirit



**01182 SOL'S**

## Mixed T-Shirt

65% polyester/35% ringspun semi-combed cotton.  
Fitted cut with side seams. Twin needle stitching. Unbranded size label at neckline. Suitable for sublimation printing.

Weight: 150 gsm

Size:	S	M	L	XL	XXL
Chest (to fit):	36/38	38/40	41/42	43/44	45/47



No Label

## T5050 Tee Jays Urban Melange T-Shirt

50% ringspun cotton/50% polyester.  
Enzyme washed. Fashion fit. Narrow ribbed collar with elastane. Taped neck and shoulders. Side seams. Twin needle sleeves and hem.

Weight: 160 gsm

Size:	S	M	L	XL	XXL	3XL
Chest (to fit):	36/38	38/40	41/42	43/44	45/47	47/49



**T5050**

**TEE JAYS**





JT031

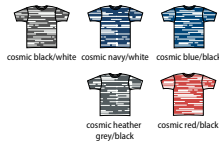
Just Ts<sup>®</sup>  
AWDis

**JT031 AWDIs  
Cosmic Blend T-Shirt**

85% cotton/15% polyester.  
Marl effect. Soft touch.  
Stylish fit. Ribbed collar.  
Taped neck. Side seams.  
Twin needle stitching.  
Unbranded size label.

Weight: 160 gsm

<b>Size:</b>	S	M	L	XL	XXL
<b>Chest (to fit):</b>	36	40	44	48	52



Sedex { **VEGAN** }



**KV2106 Kariban Vintage  
T-Shirt**

100% cotton.\*  
Soft peached finish. Ribbed collar. Double herringbone  
twill taped neck. Side seams. Twin needle stitching.  
Specifically treated to appear aged. Due to the dyeing  
process each garment is unique. Unbranded size label at neckline.

Weight: 200 gsm

<b>Size:</b>	S	M	L	XL	XXL
<b>Chest (to fit):</b>	34/36	38	40	42	44/46



\*Ash heather grey 98% cotton/2% viscose.

**KV2106**

KARIBAN  
*Vintage*



JT022

Just Ts<sup>®</sup>  
AWDis

T-SHIRTS

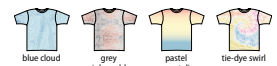


**JT022 AWDIs  
Tie-Dye T-Shirt**

100% combed ringspun cotton.  
Modern fit. Ribbed collar. Taped neck.  
Side seams. Twin needle sleeves and hem.  
Unbranded size label at neckline.  
Due to the dyeing process each garment is unique.

Weight: 140 gsm

<b>Size:</b>	XS	S	M	L	XL	XXL
<b>Chest (to fit):</b>	34	36	40	44	48	52



Sedex { **VEGAN** }



**NEW**

# 028 WASHED T-SHIRTS

T-SHIRTS

JT099

**Just Ts**  
AWDiS



**JT099 AWDiS**

**Washed T-Shirt**

55% ringspun cotton/45% polyester.  
Soft touch. Washed effect. Stylish fit. 1x1 ribbed knit collar. Hemmed sleeves. Twin needle stitching. Due to washing process each garment is unique.

Weight: 165 gsm

Size:	XS	S	M	L
Chest (to fit):	34	36	40	44
Size:	XL	XXL	3XL	
Chest (to fit):	48	52	56	



NX6010

**NL** | **NEXT LEVEL**  
APPAREL™



NX6710 P158



**SF203 SF**

**Unisex Washed Band T-Shirt**

100% cotton single jersey.  
Pigment dyed with heavily washed effect. Stretch ribbed collar. Side seams. Twin needle sleeves and hem. Due to the washing process each garment is unique. Tear out label.

Weight: 160 gsm

Size:	XXS	XS	S	M	L	XL	XXL
Chest (to fit):	32/34	34/36	36/38	38/40	42	44/46	48



Sedex

Tear Out



**SF203**



**NX6010 Next Level**  
**Tri-Blend Crew Neck T-Shirt**

50% polyester/25% ringspun combed cotton/25% rayon.  
1x1 baby ribbed collar. Taped neck and shoulders. Side seams. Twin needle sleeves and hem.

Weight: 145 gsm

Size:	XS	S	M	L
Chest (to fit):	33/35	35/38	38/41	43/44
Size:	XL	XXL	3XL	
Chest (to fit):	45/48	48/52	53.5/56	





JT001

Just Ts  
AWDis



JT001F P158

**JT001 AWDIs**  
**Tri-Blend T-Shirt**  
50% polyester/25% viscose/25% cotton.\*  
Soft touch. Fashion fit.  
Ribbed collar.  
Taped neck.  
Side seams.  
Twin needle stitching.  
Unbranded size label.



Weight: 160 gsm

Size:	S	M	L	XL	XXL	3XL
Chest (to fit):	36	40	44	48	52	56

\*Heather black 40% viscose/40% cotton/20% polyester.



**JT004 AWDIs**  
**Unisex Electric Tri-Blend T-Shirt**  
50% polyester/25% viscose/25% cotton.  
Modern unisex fit. Ribbed collar.  
Taped neck. Side seams.  
Twin needle stitching. Tear out label.



Weight: 160 gsm

Size:	S	M	L	XL	XXL
Chest (to fit):	36	40	44	48	52



JT004

Just Ts  
AWDis

CV3413  
BELLA+CANVAS.



BL8413 P158



CV3413Y Online



CV3413B P656



CV3413T P657

**CV3413 Bella+Canvas**  
**Unisex Tri-Blend T-Shirt**

50% polyester/25% airlume combed ringspun cotton/25% rayon.  
Retail fit.  
Ribbed collar.  
Taped neck and shoulders.  
Twin needle sleeves and hem.  
Tear out label.

Weight: 130 gsm

Size:	XS	S	M
Chest (to fit):	31/34	34/37	38/41
Size:	L	XL	XXL
Chest (to fit):	42/45	46/49	50/53





**NEXT LEVEL**  
A P P A R E L™



**NX6710**  
Ladies  
Tri-Blend  
T-Shirt  
P158





K555

KUSTOM KIT.

**K555 Kustom Kit**  
**Regular Fit Cooltex® Plus**  
**Wicking T-Shirt**

100% textured polyester.  
Cooltex® Plus wicking yarn. 1x1 ribbed collar.  
Self fabric taped neck and shoulders.  
Topstitched front collar. Twin needle sleeves and hem.  
Removable adhesive neck label.

Weight: 140 gsm

Size:	XS	S	M	L
Chest (to fit):	32/34	36/38	40	42
Size:	XL	XXL	3XL	4XL*
Chest (to fit):	44	46/48	50/52	54/56

\*Available in 4XL.

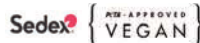


**JC020 AWDIs**  
**Cool Smooth T-Shirt**

100% polyester.  
Neoteric™ smooth fabric with inherent wickability. UPF 30+ UV protection.  
Relaxed fit. Self fabric collar. Taped neck.  
Twin needle stitching. Tear out label.

Weight: 135 gsm

Size:	XS	S	M	L
Chest (to fit):	35/37	37/39	39/41	41/43
Size:	XL	XXL	3XL	
Chest (to fit):	43/45	45/48	48/50	



JC020

**JustCool®**  
**AWDis**



JC025 P474



JC020B P638



JC001

**JustCool®**  
**AWDis**



JC005 P159



JC001B P638

**JC001 AWDIs**  
**Cool T-Shirt**

100% polyester.  
Neoteric™ textured fabric with inherent wickability.  
UPF 40+ UV protection.  
Relaxed fit. Self fabric collar.  
Taped neck.  
Twin needle stitching.  
Tear out label.

Weight: 140 gsm

Size:	XS	S	M	L	XL
Chest (to fit):	35/37	37/39	39/41	41/43	43/45
Size:	XXL	3XL**	4XL**	5XL**	
Chest (to fit):	45/48	48/50	51/53	54/56	

\*Available in 3XL.

\*\*Available in 3XL, 4XL and 5XL.



# 032 V NECK T-SHIRTS

T-SHIRTS

**SOL'S**<sup>®</sup>  
the fair spirit



11388 **SOL'S LADIES MOON**  
**V NECK T-SHIRT**  
P167

**100% ringspun**  
**semi-combed cotton**



**SS631** [614260]



**SS631 Fruit of the Loom**  
**Original V Neck T-Shirt**

100% cotton.  
Ribbed V neckline. Self fabric taped neck. Tubular body.  
Twin needle sleeves and hem. Cut out label.

Weight: White 140 gsm, Black 145 gsm

Size:	S	M	L	XL	XXL
Chest (to fit):	35/37	38/40	41/43	44/46	47/49



**CVC3005 Bella+Canvas**  
**Unisex Heather CVC V Neck T-Shirt**

52% airlume combed ringspun cotton/48% polyester.  
Retail fit. Ribbed V neckline. Taped neck and shoulders.  
Twin needle sleeves and hem. Tear out label.

Weight: 145 gsm

Size:	S	M	L	XL	XXL
Chest (to fit):	34/37	38/41	42/45	46/49	50/53

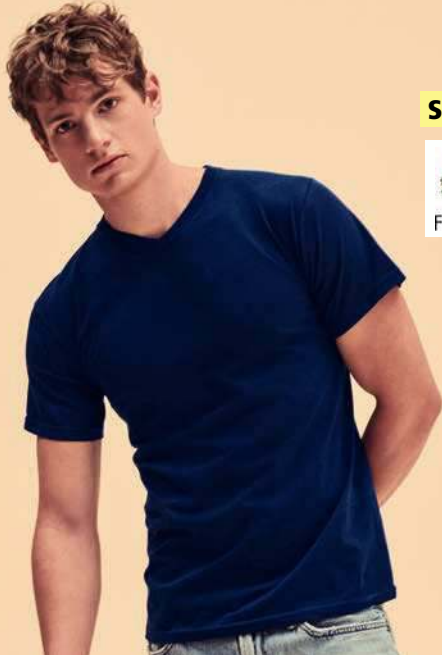


Please note, the solid colourways are now a separate style CV3005, online.

**CVC3005**

**BELLA+CANVAS**





**SS7** [610660]



SS702 P167

**SS7 Fruit of the Loom**  
**V Neck Value T-Shirt**

100% cotton.\*  
High cut V neckline in cotton/Lycra® rib. Taped neck.  
Tubular knit. Twin needle sleeves and hem. Cut out label.

Weight: White 160 gsm, Cols 165 gsm

Size:	S	M	L	XL
Chest (to fit):	35/37	38/40	41/43	44/46
Size:	XXL	3XL	4XL*	5XL*
Chest (to fit):	47/49	50/52	53/55	56/58

\*Heather grey 97% cotton/3% polyester.  
\*\*Dark heather 50% cotton/50% polyester.  
▲Available in 4XL and 5XL.



**11150 SOL'S**  
**Victory V Neck T-Shirt**

100% ringspun semi-combed cotton.\*  
Ribbed V neckline. Taped neck.  
Tubular knit. Twin needle sleeves and hem.

Weight: 150 gsm

Size:	S	M	L	XL	XXL	3XL
Chest (to fit):	36/38	38/40	41/42	43/44	45/47	47/49

\*Grey marl 85% cotton/15% viscose.



**11150**

**SOL'S**  
the fair spirit



11388 P167



**GD10** [64V00]

**GILDAN**  
Softstyle®



GD78 P166

**GD10 Gildan**  
**SoftStyle® V Neck T-Shirt**

100% ringspun cotton.\*  
Fitted style. 3/4" ribbed collar.  
Taped neck and shoulders. Mitred V neck pattern.  
Tubular knit. Twin needle sleeves and hem. Tear out label.

Weight: White 144 gsm, Cols 153 gsm

Size:	S	M	L	XL	XXL
Chest (to fit):	34/36	38	40/42	44/46	48/50

\*Sport grey 90% cotton/10% polyester.  
\*\*Dark heather 65% polyester/35% cotton.



**GD09 Gildan**  
**Premium Cotton® V Neck T-Shirt**

100% ringspun cotton.\*  
Pre-shrunk jersey knit. Mitred V neckline.  
Taped neck and shoulders.  
Twin needle sleeves and hem.  
Tear out label (some colours in transition).

Weight: White 180 gsm, Cols 185 gsm

Size:	S	M	L	XL	XXL
Chest (to fit):	34/36	38/40	42/44	46/48	50/52

\*Sport grey 90% cotton/10% polyester.



**GD09** [41V00]

**GILDAN**  
PREMIUM  
Cotton®



GD91 P167

**NX6010**  
Tri-Blend Crew  
Neck T-Shirt  
P130



**NEXT LEVEL**  
A P P A R E L™

# TRI-BLEND

The Perfect Blend

**NX6010**  
Tri-Blend Crew  
Neck T-Shirt  
P130

#1 Selling  
Tri-Blend

Super Soft

Retail Cut  
Vintage Inspired Finish



# 036 CONTRAST T-SHIRTS

T-SHIRTS

**SS34** [611680]

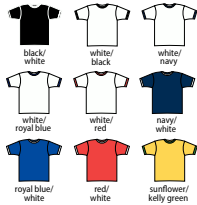


**SS34 Fruit of the Loom Contrast Ringer T-Shirt**

100% cotton.  
Contrast cotton/Lycra® ribbed collar and cuffs.  
Taped neck.  
Twin needle stitching.  
Cut out label.

Weight: White 160 gsm, Cols 165 gsm

Size:	S	M	L
Chest (to fit):	35/37	38/40	41/43
Size:	XL	XXL	3XL
Chest (to fit):	44/46	47/49	50/52



**NX3604**



**NX3604 Next Level Unisex Cotton Ringer T-Shirt**

100% ringspun combed cotton.\*  
Contrast 1x1 baby ribbed collar and cuffs.  
Side seams. Twin needle stitching. Tear out label.

Weight: 145 gsm



Size:	XS	S	M	L	XL	XXL
Chest (to fit):	33/35	35/38	38/41	43/44	45/48	48/52



\*Heather grey 90% cotton/10% polyester.

**03108 SOL'S Rainbow T-Shirt**

100% semi-combed ringspun cotton.  
1x1 ribbed collar. Taped neck. Ribbed cuffs with contrast stripes.  
Tubular body. Twin needle hem. Unbranded size label at neckline.

Weight: 155 gsm

Size:	S	M	L	XL	XXL	3XL	4XL
Chest (to fit):	36/38	38/40	41/42	43/44	45/47	47/49	50/52



**K508 Kustom Kit Fashion Fit Ringer T-Shirt**

65% polyester/35% cotton.  
Fashion fit. Contrast 1x1 ribbed folded collar and cuffs.  
Self fabric taped neck and shoulders.  
Side seams. Twin needle hem. Tear out label.

Weight: 160 gsm



Size:	XS	S	M	L	XL	XXL
Chest (to fit):	32/34	36/38	40	42	44	46/48

Sedex<sup>2</sup>

**03108**



03109 P165



**K508**

**KUSTOM KIT.**





SS31 [610260]



**SS31 Fruit of the Loom Contrast Baseball T-Shirt**

100% cotton.  
Cotton/Lycra® contrast ribbed collar.  
Contrast raglan sleeves. Twin needle stitching.  
Cut out label.

Weight: White 160 gsm, Cols 165 gsm

Size:	S	M	L	XL	XXL	3XL
Chest (to fit):	35/37	38/40	41/43	44/46	47/49	50/52



Marl colours may contain other fibres.

**JT110 AWDIs Unisex Colour Block T-Shirt**

100% combed ringspun cotton.  
Modern unisex fit. Ribbed collar. Taped neck.  
Contrast lower body. Side seams. Twin needle sleeves and hem.  
Unbranded size label at neckline.

Weight: 140 gsm

Size:	S	M	L	XL	XXL
Chest (to fit):	36	40	44	48	52



JT110

**Just Ts**  
AWDIs

11190

**SOL'S**  
the fair spirit



11195 P165



**11190 SOL'S Funky Contrast Baseball T-Shirt**

100% ringspun semi-combed cotton.\*  
Contrast ribbed collar. Contrast raglan sleeves.  
Taped neck. Twin needle sleeves and hem.

Weight: 150 gsm

Size:	S	M	L
Chest (to fit):	36/38	38/40	41/42
Size:	XL	XXL	3XL
Chest (to fit):	43/44	45/47	47/49



\*Grey marl 85% cotton/15% viscose.

# 038 CONTRAST T-SHIRTS

T-SHIRTS

01188



01187 P165



**SOL'S**  
the fair spirit

**01188 SOL'S  
Camo T-Shirt**

100% ringspun semi-combed cotton.  
Slim fit.  
Side seams.  
Twin needle stitching.  
Unbranded size label at neckline.

Weight: 150 gsm

Size:	S	M	L
Chest (to fit):	36/38	38/40	41/42
Size:	XL	XXL	
Chest (to fit):	43/44	45/47	



JT034

**Just Ts**  
AWDis



**JT034 AWDIs  
Camo T-Shirt**

100% cotton.  
Modern fit. Soft cotton faced fabric.  
Ribbed collar. Taped neck. Side seams. Unbranded size label.

Weight: 160 gsm

Size:	S	M	L	XL	XXL
Chest (to fit):	36	40	44	48	52



LV290



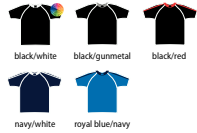
**FINDEN-HALES**

**LV290 Finden & Hales  
Unisex Team T-Shirt**

100% polyester.  
Single jersey. Wicking finish keeps you dry and comfortable. Raglan sleeves. Taped neck. Contrast back collar, shoulder and sleeve panels. Twin needle cuffs and hem.

Weight: 160 gsm

Size:	XS	S	M
Chest (to fit):	34/36	36/38	38/40
Size:	L	XL	
Chest (to fit):	42	44/46	
Size:	XXL	3XL	
Chest (to fit):	48	50/52	



NEW COLOURS

**JT034 AWDIs  
Camo T-Shirt**

100% cotton.  
Modern fit. Soft cotton faced fabric.  
Ribbed collar. Taped neck. Side seams. Unbranded size label.

Weight: 160 gsm

Size:	S	M	L	XL	XXL
Chest (to fit):	36	40	44	48	52



**SF253 SF  
Unisex Contrast T-Shirt**

100% cotton.  
Single jersey. Regular fit. Stretch ribbed collar. Taped neck. Contrast polyester side panels, suitable for sublimation printing. Twin needle sleeves and hem. Tear out label.

Weight: 140 gsm

Size:	XXS	XS	S	M	L	XL	XXL
Chest (to fit):	32/34	34/36	36/38	38/40	42	44/46	48



LV240



LV242 P639



**FINDEN-HALES**

**LV240 Finden & Hales  
Performance Panel T-Shirt**

100% polyester.  
Permanent wicking fabric keeps you dry and comfortable.  
Birds eye knit.  
Self fabric collar.  
Raglan sleeves.  
Contrast piping and panelling on underarms and sides.  
Twin needle hem.

Weight: 140 gsm

Size:	XS	S	M
Chest (to fit):	34/36	36/38	38/40
Size:	L	XL	
Chest (to fit):	42	44/46	
Size:	XXL	3XL	
Chest (to fit):	48	50/52	



SF253







01398

**SOL'S**  
the fair spirit



01399 P165



01400 P635

SF202



SM202 P635

**01398 SOL'S Miles Striped T-Shirt**

100% ringspun combed cotton.\*  
Fitted style. Self fabric neckline. Taped neck.  
Twin needle stitching. Unbranded size label at neckline.



Weight: 150 gsm

Size:	S	M	L	XL	XXL	3XL
Chest (to fit):	36/38	38/40	41/42	43/44	45/47	47/49

\*Ash/lemon 98% cotton/2% viscose.



**SF202 SF Unisex Striped T-Shirt**

100% cotton.\*  
Single jersey. Regular fit. Stretch ribbed collar.  
Taped neck. Side seams. Twin needle stitching. Tear out label.



Weight: 160 gsm

Size:	XXS	XS	S	M	L	XL	XXL
Chest (to fit):	32/34	34/36	36/38	38/40	42	44/46	48

\*Heather grey 85% cotton/15% viscose.



**FR135 Front Row Unisex Breton Striped T-Shirt**

100% cotton.  
Single jersey. Ribbed stretch collar. Flatlock stitched V detail at front neckline.  
Flatlock stitched neckline, shoulders and armholes. Contrast taped neck. High chest seam. Contrast striped lower body. Side seams. Twin needle sleeves and hem. Tag free.



Weight: 180 gsm

Size:	XS	S	M	L	XL	XXL
Chest (to fit):	34/36	36/38	38/40	42	44/46	48

Sedex®



**FR136 Front Row Striped T-Shirt**

100% cotton.  
Relaxed unisex fit. Single jersey. Ribbed collar. Single jersey taped back neck.  
Side seams. Twin needle stitching. Tag free.



Weight: 180 gsm

Size:	XS	S	M	L	XL	XXL
Chest (to fit):	34/36	36/38	38/40	42	44/46	48

Sedex®



FR135

**FRONT ROW & CO**  
EST. 1991



FR136

**FRONT ROW & CO**  
EST. 1991



# 040 LONG SLEEVE T-SHIRTS

T-SHIRTS

11420

**SOL'S**  
the fair spirit



11425 P169



## 11420 SOL'S Monarch Long Sleeve T-Shirt

100% ringspun semi-combed cotton.\*  
Ribbed collar. Taped neck.  
Tubular body.  
Hemmed sleeves.  
Twin needle stitching.

Weight: 150 gsm

Size:	S	M	L	XL	XXL	3XL	4XL	5XL
Chest (to fit):	36/38	38/40	41/42	43/44	45/47	47/49	50/52	53/55

\*Grey marl 85% cotton/15% viscose.



GD11 [64400]

**GILDAN**  
Softstyle®



## GD11 Gildan SoftStyle® Long Sleeve T-Shirt

100% ringspun cotton.\*  
Ribbed collar. Taped neck and shoulders.  
Tubular knit. Hemmed sleeves.  
Twin needle stitching.  
Tear out label.

Weight: White 144 gsm, Cols 153 gsm

Size:	S	M	L	XL	XXL
Chest (to fit):	34/36	38	40/42	44/46	48/50

\*Sport grey 90% cotton/10% polyester.



Sedex®

## SS632 Fruit of the Loom Original Long Sleeve T-Shirt

100% cotton.\*  
Ribbed collar. Self fabric taped neck.  
Tubular body. Twin needle sleeves and hem.  
Cut out label.

Weight: White 140 gsm, Cols 145 gsm

Size:	S	M	L	XL	XXL	3XL	4XL**	5XL**
Chest (to fit):	35/37	38/40	41/43	44/46	47/49	50/52	53/55	56/58

\*Heather grey 97% cotton/3% polyester. \*\*Available in 4XL and 5XL.



## K510 Kustom Kit Long Sleeve Fashion Fit Superwash® 60°C T-Shirt

65% polyester/35% cotton.  
1x1 ribbed collar. Self fabric taped neck and shoulders.  
Topstitched front neckline. Twin needle sleeves and hem.  
60°C wash. Tear out label. Designed for a range of print processes.

Weight: 160 gsm

Size:	XS	S	M	L	XL	XXL	3XL
Chest (to fit):	32/34	36/38	40	42	44	46/48	50/52



Sedex®



SS632 [614280]



K510

KUSTOM KIT.





SS21 [610380]



SS21B P635

**SS21 Fruit of the Loom Long Sleeve Value T-Shirt**

100% cotton.\*  
Cotton/Lycra® ribbed collar. Taped neck.  
Tubular knit for shape retention.  
Twin needle stitching. Cut out label.

Weight: White 160 gsm, Cols 165 gsm

Size:	S	M	L	XL	XXL	3XL	4XL	5XL
Chest (to fit):	35/37	38/40	41/43	44/46	47/49	50/52	53/55	56/58

\*Heather grey 97% cotton/3% polyester.  
\*\*Dark heather 50% cotton/50% polyester. ▲Available in 4XL and 5XL.



NX3601



**NX3601 Next Level Cotton Long Sleeve Crew Neck T-Shirt**

100% ringspun combed cotton.\*  
1x1 baby ribbed collar. Side seams.  
Twin needle sleeves and hem. Tear out label.

Weight: 145 gsm

Size:	S	M	L	XL	XXL
Chest (to fit):	35/38	38/41	43/44	45/48	48/52

\*Heather grey 90% ringspun combed cotton/10% polyester.



**SF124 SF Men Feel Good Stretch Long Sleeve T-Shirt**

96% cotton/4% elastane.\*  
Single jersey. Enzyme wash. Soft touch. Soft stretchy ribbed collar.  
Taped neck. Side seams. Longer length. Twin needle sleeves and hem.  
Tear out label.

Weight: 165 gsm

Size:	S	M	L	XL	XXL
Chest (to fit):	36/38	38/40	42	44/46	48

\*Heather grey 81% cotton/15% viscose/4% elastane.



**CV3501 Bella+Canvas Unisex Jersey Long Sleeve T-Shirt**

100% airlume combed ringspun cotton.  
Retail fit. Pre-shrunk. Ribbed collar and cuffs.  
Taped neck. Side seams. Twin needle hem.  
Tear out label.

Weight: 145 gsm

Size:	XS	S	M	L	XL	XXL
Chest (to fit):	31/34	34/37	38/41	42/45	46/49	50/53

Please note, dark grey heather is now a separate style code CVC3501, p145.



SF124



SK124 P169



CV3501

BELLA+CANVAS.

# 042 LONG SLEEVE T-SHIRTS

T-SHIRTS

02074



02075 Online

**SOL'S**  
the fair spirit

**02074 SOL'S Imperial Long Sleeve T-Shirt**

100% ringspun semi-combed cotton.\*  
Elastane ribbed collar. Taped neck.  
Tubular body. Twin needle stitching.  
Tear out label.

Weight: 190 gsm

Size:	S	M	L	XL
Chest (to fit):	36/38	38/40	41/42	43/44
Size:	XXL	3XL	4XL**	
Chest (to fit):	45/47	47/49	50/52	

\*Grey marl 85% cotton/15% viscose.  
\*\*Available in 4XL.



SS22 [610420]



**SS22 Fruit of the Loom Long Sleeve Super Premium T-Shirt**

100% cotton.  
Cotton/Lycra® ribbed collar. Shoulder to shoulder taping. Hemmed sleeves.  
Twin needle stitching. Cut out label.  
60°C wash.

Weight: White 190 gsm, Black 205 gsm

Size:	S	M	L
Chest (to fit):	35/37	38/40	41/43
Size:	XL	XXL	
Chest (to fit):	44/46	47/49	



SF514



SM514 Online



**SF514 SF Unisex Drop Shoulder Slogan Top**

100% cotton.\*  
Single jersey. Washed garment. Ribbed collar and cuffs with cover stitch detail.  
Taped neck. Oversized with drop armholes for optimised decoration surface. Side vents. Curved drop tail. Tear out label.

Weight: 220 gsm

Size:	XXS	XS	S	M
Chest (to fit):	32/34	34/36	36/38	38/40
Size:	L	XL	XXL	
Chest (to fit):	42	44/46	48	

\*Heather grey 85% cotton/15% viscose.



Sedex { RECYCLED APPROVED } VEGAN

GD14 [2400]

**GILDAN**  
Ultra Cotton™



**GD14 Gildan Ultra Cotton™ Long Sleeve T-Shirt**

100% cotton.\*  
Classic fit.  
Ribbed collar.  
Taped neck and shoulders.  
Cuffed sleeves.  
Tubular body.  
Twin needle neck and hem.

Weight: White 183 gsm, Cols 203 gsm

Size:	S	M	L	XL	XXL
Chest (to fit):	34/36	38/40	42/44	46/48	50/52

\*Ash 99% cotton/1% polyester.  
\*\*Sport grey 90% cotton/10% polyester.  
▲Dark heather, safety green and s orange 50% cotton/50% polyester.



**GD22 Gildan Hammer Heavyweight Long Sleeve T-Shirt**

100% ringspun combed cotton.\*  
Seamless ribbed collar. Taped neck and shoulders.  
Tubular body. Ribbed cuffs. Twin needle hem.  
Tear out label.

Weight: White 193 gsm, Cols 203 gsm

Size:	S	M	L	XL	XXL	3XL	4XL
Chest (to fit):	34/36	38/40	42/44	46/48	50/52	54/56	58/60

\*Graphite heather 50% cotton/50% polyester.  
\*\*Sport grey 90% cotton/10% polyester.



GD22 [H400]

**GILDAN**  
**HAMMER**





**JT002**

**Just Ts**  
AWDis



JT002F P170

**JT002 AWDIs**  
**Long Sleeve Tri-Blend T-Shirt**

50% polyester/25% viscose/25% cotton.  
Soft touch. Modern fit. Ribbed collar.  
Taped neck. Side seams. Twin needle stitching.  
Unbranded size label.

Weight: 160 gsm

Size:	S	M	L	XL	XXL
Chest (to fit):	36	40	44	48	52



**NX6071 Next Level**  
**Unisex Long Sleeve Tri-Blend Crew T-Shirt**

50% polyester/25% ringspun combed cotton/25% rayon.  
1x1 baby ribbed collar. Taped neck and shoulders.  
Side seams. Twin needle stitching.

Weight: 145 gsm

Size:	XS	S	M	L	XL	XXL
Chest (to fit):	33/35	35/38	38/41	43/44	45/48	48/52



**NX6071**

**NL** | **NEXT LEVEL**  
APPAREL.

**BELLA+CANVAS**

**CVC3501 Bella+Canvas**  
**Unisex Heather CVC Long Sleeve T-Shirt**

52% airlume combed ringspun cotton/48% polyester.  
Retail fit. Pre-shrunk.  
Ribbed collar and cuffs.  
Taped neck. Side seams.  
Twin needle hem. Tear out label.

Weight: 145 gsm

Size:	XS	S	M
Chest (to fit):	31/34	34/37	38/41
Size:	L	XL	XXL
Chest (to fit):	42/45	46/49	50/53

Please note, the solid colourways are now a separate style CV3501, p143.



**CVC3501**



**NEW**



**SF259 SF Men**  
**Long Sleeve Longline T-Shirt**

100% cotton.  
Single jersey. Regular fit.  
Soft stretch ribbed collar.  
Taped neck. Side seams. Extra long length.  
Twin needle stitching. Curved drop hem.  
Tear out label.

Weight: 140 gsm

Size:	S	M	L
Chest (to fit):	36/38	38/40	42
Size:	XL	XXL	
Chest (to fit):	44/46	48	



**SF259**

**HENBURY**

**H020 Henbury**  
**Long Sleeve Roll Neck Top**

96% cotton/4% elastane single jersey.  
Double thickness stretch ribbed roll neck.  
Reinforced shoulders and neck.  
Twin needle stitching.

Weight: 190 gsm

Size:	S	M	L
Chest (to fit):	36/38	38/40	42
Size:	XL	XXL	
Chest (to fit):	44/46	48	



**H020**



# 044 LONG SLEEVE CONTRAST T-SHIRTS

T-SHIRTS

01402



01403 P173

**SOL'S**  
the fair spirit

**01402 SOL'S  
Marine Long Sleeve  
Striped T-Shirt**

100% ringspun combed cotton.  
Slim fit.  
Self fabric neckline.  
Taped neck.  
Twin needle stitching.  
Unbranded size label at neckline.

Weight: 150 gsm

Size:	S	M	L
Chest (to fit):	36/38	38/40	41/42
Size:	XL	XXL	3XL
Chest (to fit):	43/44	45/47	47/49



SF204



**SF204 SF  
Unisex Long Sleeve  
Striped T-Shirt**

100% cotton.  
Single jersey. Regular fit. Stretch ribbed collar. Taped neck. Side seams. Twin needle stitching. Tear out label.

Weight: 160 gsm

Size:	XXS	XS	S	M
Chest (to fit):	32/34	34/36	36/38	38/40
Size:	L	XL	XXL	
Chest (to fit):	42	44/46	48	



FR134



**FRONT ROW & CO**  
EST. 1991

**FR134 Front Row  
Unisex Long Sleeve Breton  
Striped T-Shirt**

100% cotton single jersey.  
Regular fit. Stretch ribbed collar.  
V flatlock stitching detail at neckline.  
Flatlock stitching at neck, shoulder seams and armholes. High chest seam on front and upper arms. Striped lower body and sleeves. Plain upper body.  
Twin needle cuffs and hem. Tag free.

Weight: 180 gsm

Size:	XS	S	M
Chest (to fit):	34/36	36/38	38/40
Size:	L	XL	XXL
Chest (to fit):	42	44/46	48



CV3200

BELLA+CANVAS



CV3200Y Online



CV3200T P658



**CV3200 Bella+Canvas**

**Unisex 3/4 Sleeve Baseball T-Shirt**

52% airlume combed ringspun cotton/48% polyester.\*  
Slim retail fit. Contrast collar.  
Contrast raglan sleeves.  
Side seams. Tear out label.

Weight: Cols 122 gsm, Tri-blends 130 gsm

Size:	XS	S	M
Chest (to fit):	31/34	34/37	38/41
Size:	L	XL	XXL
Chest (to fit):	42/45	46/49	50/53



\*Tri-blends 50% polyester/25% cotton/25% rayon.



**T5072 Tee Jays**

**Long Sleeve Baseball T-Shirt**

100% ringspun combed cotton.\*  
Fitted style. Contrast ribbed collar with elastane. Contrast raglan sleeves.  
Side seams. Cuffed sleeves. Twin needle hem.

Weight: 185 gsm

Size:	S	M	L	XL	XXL	3XL
Chest (to fit):	36/38	38/40	41/42	43/44	45/47	47/49

\*Heather grey 85% cotton/15% viscose.



T5072

**TEE JAYS**





SF271



SK271 P173



SM271 P635

**SF271 SF Men**  
**Long Sleeve Baseball T-Shirt**

100% cotton.\*  
Single jersey. Contrast stretch ribbed collar.  
Taped neck. Contrast raglan sleeves. Side seams.  
Longer length. Twin needle curved hem. Tear out label.



Weight: 140 gsm

Size:	XS	S	M	L	XL	XXL
Chest (to fit):	34/36	36/38	38/40	42	44/46	48

\*Heather grey 85% cotton/15% viscose.



**SS32 Fruit of the Loom**  
**Contrast Long Sleeve Baseball T-Shirt**

100% cotton.  
Cotton/Lycra® contrast ribbed collar. Contrast raglan sleeves.  
Twin needle stitching. Cut out label.



Weight: Body 160 gsm, Sleeves 165 gsm

Size:	S	M	L	XL	XXL	3XL
Chest (to fit):	35/37	38/40	41/43	44/46	47/49	50/52

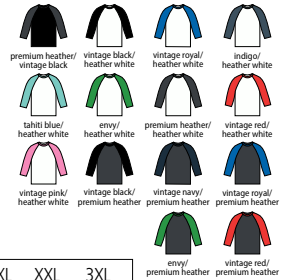


NX6051



**NX6051 Next Level**  
**Unisex Tri-Blend 3/4 Sleeve Raglan T-Shirt**

50% polyester/25% ringspun combed cotton/25% rayon.  
Contrast 1x1 baby ribbed collar.  
Contrast raglan sleeves.  
Side seams.  
Twin needle stitching.



Weight: 145 gsm

Size:	XS	S	M	L	XL	XXL	3XL
Chest (to fit):	33/35	35/38	38/41	43/44	45/48	48/52	53.5/56

**02942 SOL'S**  
**Funky Contrast Long Sleeve T-Shirt**

100% semi-combed ringspun cotton.  
Contrast elastane ribbed collar. Contrast raglan sleeves.  
Side seams. Twin needle sleeves and hem.  
Unbranded size label.



Weight: 150 gsm

Size:	S	M	L	XL	XXL	3XL
Chest (to fit):	36/38	38/40	41/42	43/44	45/47	47/49



SS32 [610280]



02942



02943 P173

# 046 VESTS & TANKS

T-SHIRTS

01223



**SOL'S**  
the fair spirit

**01223 SOL'S**  
**Unisex Jamaica Tank Top**

100% polyester.  
Deep armholes.  
Side seams.  
Suitable for sublimation printing.

Weight: 120 gsm

Size:	XS	S	M
Chest (to fit):	35/36	36/38	38/40
Size:	L	XL	XXL
Chest (to fit):	41/42	43/44	45/47



SF236



**SF236 SF Men**  
**Muscle Vest**

60% cotton/40% polyester.\*  
Single jersey. Self fabric bound neckline and armholes.  
Racer back style. Side seams. Longer length. Twin needle straight hem. Tear out label.

Weight: 140 gsm

Size:	S	M	L	XL	XXL
Chest (to fit):	36/38	38/40	42	44/46	48



\*Heather grey 85% cotton/15% viscose.

SF232



SK232 P178



**SF232 SF Men**  
**High Neck Vest**

60% cotton/40% polyester.\*  
Single jersey. Stretch ribbed neckline.  
Raw edge armholes and hem. Side seams.  
Tear out label.

Weight: 140 gsm

Size:	XS	S	M
Chest (to fit):	34/36	36/38	38/40
Size:	L	XL	XXL
Chest (to fit):	42	44/46	48

\*Heather grey 85% cotton/15% viscose.



**JC007 AWDiS**  
**Cool Vest**

100% polyester.  
Neoteric™ textured fabric with inherent wickability. UPF 40+ UV protection.  
Self fabric bound neckline and armholes.  
Twin needle curved drop hem.  
Tear out label (some colours in transition).

Weight: 140 gsm

Size:	S	M	L
Chest (to fit):	37/39	39/41	41/43
Size:	XL	XXL	
Chest (to fit):	43/45	45/48	



CV3483



**BELLA+CANVAS**  
**CV3483 Bella+Canvas**  
**Unisex Jersey Muscle Tank Top**

100% airlume combed ringspun cotton.\*  
Slim retail fit. Ribbed collar.  
Side seams. Twin needle hem.  
Tear out label.

Weight: 142 gsm

Size:	S	M	L
Chest (to fit):	34/37	38/41	42/45
Size:	XL	XXL	
Chest (to fit):	46/49	50/53	

\*Dark grey heather 52% airlume combed ringspun cotton/48% polyester.



JC007

**JustCool**  
AWDiS



JC015 P175



JC007B P636







11465

**SOL'S**  
the fair spirit



01826 P176



11475 P175

**11465 SOL'S Justin Tank Top**

100% ringspun semi-combed cotton.\* Ribbed bound neckline and armholes. Tubular body. Twin needle hem.



Weight: 150 gsm

Size:	S	M	L	XL	XXL	3XL**	4XL**	5XL**
Chest (to fit):	32/33	34/35	36/37	38/40	41/42	43/44	45/46	47/49

\*Grey marl 85% cotton/15% viscose. \*\*Available in 3XL, 4XL and 5XL.

**CV3480 Bella+Canvas Unisex Jersey Tank Top**

100% airlume combed ringspun cotton.\* Bound neckline and armholes. Twin needle hem. Tear out label.



Weight: 145 gsm

Size:	XS	S	M	L	XL	XXL
Chest (to fit):	31/34	34/37	38/41	42/45	46/49	50/53

\*Heather navy and heather slate 52% cotton/48% polyester. \*\*Triblend 50% polyester/25% cotton/25% rayon.



CV3480

**BELLA+CANVAS**

**Just Ts**  
AWDis

**JT007 AWDIs Tri-Blend Vest**

50% polyester/25% cotton/25% viscose.\* Modern fit. Scoop neck. Bound neckline and armholes. Twin needle hem. Unbranded size label.

Weight: 160 gsm

Size:	S	M	L	XL	XXL
Chest (to fit):	36	40	44	48	52

\*Heather black 40% cotton/40% viscose/20% polyester.



JT007

JT015 P176



**SS18 Fruit of the Loom Athletic Vest**

100% cotton.\* Bound neckline and armholes. High cut armholes for unisex fitting. Twin needle hem. Cut out label.

Weight: White 160 gsm, Cols 165 gsm

Size:	S	M	L	XL
Chest (to fit):	35/37	38/40	41/43	44/46
Size:	XXL	3XL	4XL**	5XL**
Chest (to fit):	47/49	50/52	53/55	56/58

\*Heather grey 97% cotton/3% polyester. \*\*Available in 4XL and 5XL.



SS18 [610980]

SS704 P175

**GILDAN**  
Softstyle

**GD12 Gildan SoftStyle Tank Top**

100% ringspun cotton.\* Ribbed bound neckline and armholes. Twin needle hem. Tear out label.

Weight: White 144 gsm, Cols 153 gsm

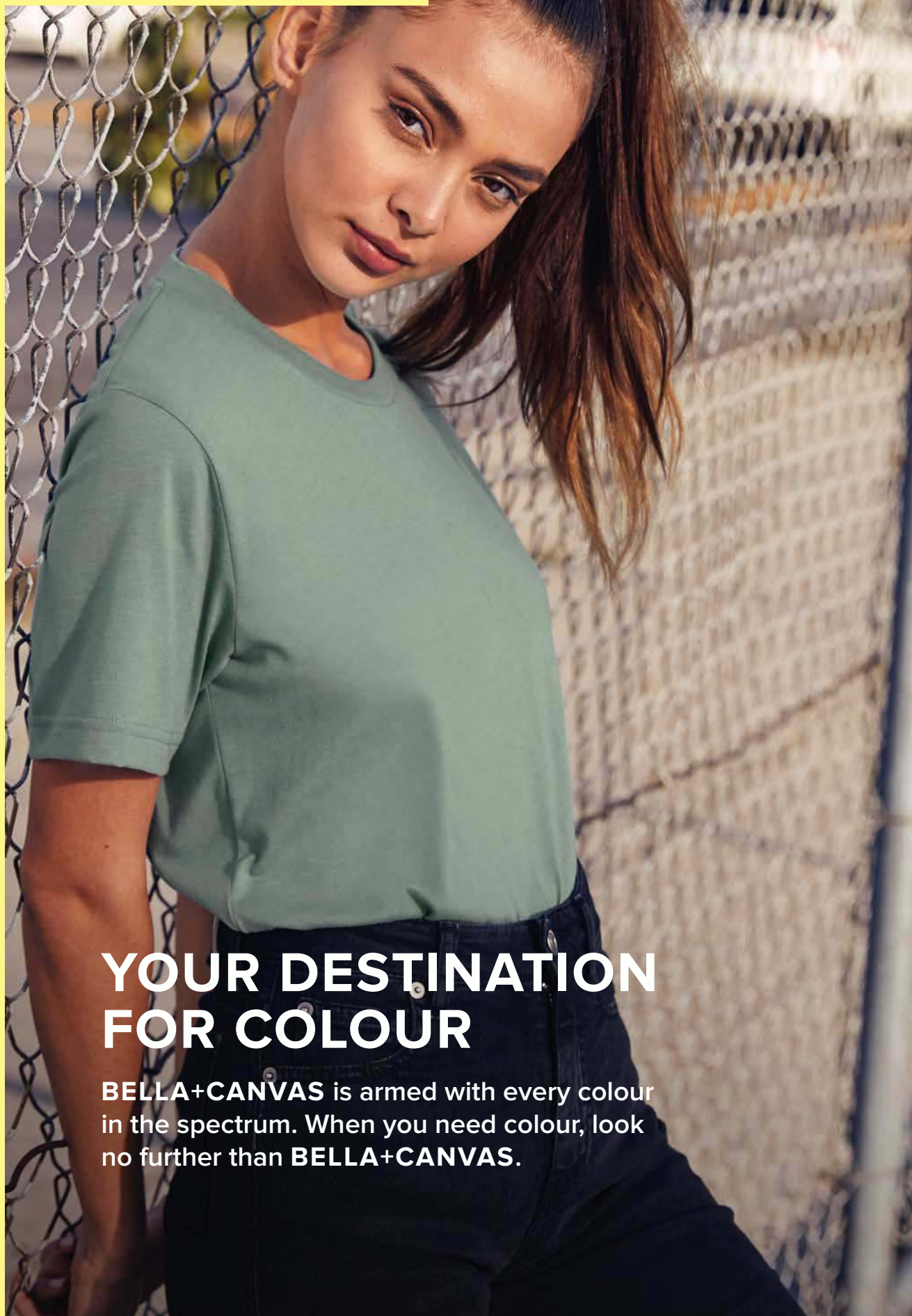
Size:	S	M	L
Chest (to fit):	34/36	38	40/42
Size:	XL	XXL	
Chest (to fit):	44/46	48/50	

\*Sport grey 90% cotton/10% polyester.



GD12 [64200]

GD77 P175



## YOUR DESTINATION FOR COLOUR

**BELLA+CANVAS** is armed with every colour in the spectrum. When you need colour, look no further than **BELLA+CANVAS**.

# BELLA+CANVAS®

**CV3001**  
Unisex Crew Neck  
T-Shirt in Black  
P107

**CVC3001**  
Unisex Heather  
CVC T-Shirt in  
Heather Dusty Blue  
P127



01825

## SOL'S®

the fair spirit



11380 P104



11970 P631



11981 Online



### 01825 SOL'S Ladies Regent T-Shirt

100% ringspun semi-combed cotton.\* Ribbed collar. Taped neck. Side seams. Twin needle sleeves and hem. This item runs small in comparison to some other brands. Please check sizing before decoration.

Weight: 150 gsm



Size:	S	M	L	XL	XXL	3XL▲
Ladies size:	8/10	10/12	12/14	14/16	16/18	18/20

\*Grey marl 85% cotton/15% viscose. \*\*Ash 98% cotton/2% viscose. ▲Available in 3XL.

11386

## SOL'S®

the fair spirit



11380 P104



10553 P122



### 11386 SOL'S Ladies Miss T-Shirt

100% semi-combed cotton.\* Ladies cut with side seams. Taped neck. Self fabric narrow collar. Twin needle sleeves and hem. This item runs small in comparison to some other brands. Please check sizing before decoration.

Weight: 150 gsm

Size:	S	M	L	XL	XXL
Ladies size:	8/10	10/12	12/14	14/16	16/18

\*Grey marl 85% cotton/15% viscose.



### SS712 Fruit of the Loom Lady Fit Original T-Shirt

100% cotton.\* Ribbed collar. Taped neck. Shaped side seams. Twin needle stitching. Cut out label.

Weight: White 140 gsm, Cols 145 gsm

Size:	XS	S	M	L	XL	XXL
Ladies size:	8	10	12	14	16	18
Chest (to fit):	30	32	34	36	38	40

\*Heather grey 97% cotton/3% polyester.



### SS712 [614200]



SS12 P105



SS12B P632





GD72 [64000L]

**GILDAN®**  
Softstyle®



GD01 P103



GD01B P631

SS721 [614320]



SS721B Online



SS621B P631



SS621 P103



**SS721 Fruit of the Loom**

**Ladies Iconic 150 T-Shirt**

100% ringspun combed cotton.\*

Soft touch.

1x1 ribbed collar.

Taped neck.

Shaped side seams.

Twin needle sleeves and hem.

Tear out label.

Weight: White 140 gsm, Cols 145-150 gsm

Size:	XS	S	M	L	XL	XXL
Ladies size:	8	10	12	14	16	18
Chest (to fit):	30	32	34	36	38	40

\*Heather grey 97% cotton/3% polyester.

\*\*Athletic heather 90% cotton/10% recycled polyester.

▲All other heathers 52% cotton/48% polyester.



**NX1510 Next Level**

**Ladies Ideal T-Shirt**

60% ringspun combed cotton/40% polyester.

1x1 baby ribbed collar with front cover stitch.

Taped neck and shoulders.

Side seams.

Twin needle stitching.

Tear out label.

Weight: 135 gsm

Size:	XS	S	M	L	XL	XXL
Chest (to fit):	30	32	34	36	39	42



**NX1510**

**NL** NEXT LEVEL APPAREL



**GD72 Gildan SoftStyle® Ladies Fitted Ringspun T-Shirt**

100% ringspun cotton.\*

Fitted style with side seams.

Narrow 1/2" ribbed collar.

Seamless twin needle collar.

Taped neck and shoulders.

Twin needle sleeves and hem.

Tear out label.

Weight: White 144 gsm, Cols 153 gsm

Size:	S	M	L	XL	XXL
Ladies size:	6	6/8	10	12/14	14/16

\*Sport grey and antiques 90% cotton/10% polyester.

\*\*Dark heather 65% polyester/35% cotton.



# 052 LADIES T-SHIRTS

T-SHIRTS

**JT100F**

**Just Ts**  
AWDis



JT100 P108



**JT100F AWDIs**

**The 100 Ladies T-Shirt**

100% combed ringspun cotton.\*  
Ladies fit. Ribbed collar. Taped neck.  
Side seams. Twin needle sleeves and hem.  
Unbranded size label at neckline.

Weight: 140 gsm

Size:	XS	S	M	L	XL	XXL
Ladies size:	8	10	12	14	16	18

\*Heather grey 90% cotton/10% viscose.



**NX3900**

**NL** | **NEXT LEVEL**  
APPAREL.



NX3600 P106



NX3310 P632



**NX3900 Next Level**  
**Ladies Boyfriend T-Shirt**

100% ringspun combed cotton.\*  
Ladies cut. 1x1 baby ribbed collar.  
Taped neck and shoulders. Side seams.  
Longer length. Twin needle sleeves and hem.  
Tear out label.

Weight: 145 gsm

Size:	XS	S	M	L	XL	XXL	3XL
Chest (to fit):	30	32	34	36	39	42	45.5

\*Heather grey 90% cotton/10% polyester.



**BL6400 Bella+Canvas**

**Ladies Relaxed Jersey T-Shirt**

100% airlume combed ringspun cotton.  
Pre-shrunk. Relaxed fit. Ribbed collar.  
Taped neck. Side seams.  
Twin needle sleeves and hem. Tear out label.

Weight: 145 gsm

Size:	S	M	L
Ladies size:	6/8	10/12	14/16
Chest (to fit):	30/32	32/34	34/36
Size:	XL	XXL*	
Ladies size:	18/20	22/24	
Chest (to fit):	36/38	38/40	

\*Available in XXL.

Please note, the heather colourways are now a separate style BLC6400, p159.



**BL6004 Bella+Canvas**

**Ladies Favourite T-Shirt**

100% airlume combed ringspun cotton.\*  
Fitted style. Ribbed collar. Shoulder to shoulder taping.  
Longer length. Twin needle stitching. Tear out label.

Weight: 145 gsm

Size:	S	M	L	XL
Ladies size:	6/8	10/12	14/16	18/20
Chest (to fit):	30/32	32/34	34/36	36/38

\*Athletic heather 90% airlume combed ringspun cotton/10% polyester.

\*\*Dark grey heather 52% airlume combed ringspun cotton/48% polyester.



**BL6400**

**BELLA+CANVAS**



**BL6004**

**BELLA+CANVAS**



CV3001 P107



CVC3001 P127



CV3001Y P632



SS77B Online



SS6B P633



SS77 [613720]



SS6 P109

SS77 Fruit of the Loom  
Lady Fit Value T-Shirt

100% cotton.\*  
Cotton/Lycra® ribbed collar.  
Taped neck.  
Shaped side seams.  
Longer length.  
Twin needle sleeves and hem.  
Cut out label.

Weight: White 160 gsm, Cols 165 gsm

Size:	XS	S	M
Ladies size:	8	10	12
Chest (to fit):	30	32	34
Size:	L	XL	XXL
Ladies size:	14	16	18
Chest (to fit):	36	38	40

\*Heather grey 97% cotton/3% polyester.  
\*\*Heathers 50% cotton/50% polyester.



T5001 Tee Jays  
Ladies Luxury Cotton T-Shirt

100% ringspun combed cotton.  
In transition to using organic cotton. Enzyme washed. Fitted style.  
Narrow ribbed collar with elastane. Taped neck and shoulders. Side seams.  
Top stitched sleeves and hem.

Weight: 160 gsm

Size:	S	M	L	XL	XXL
Ladies size:	6/8	8/10	10/12	12/14	14/16



T5001



T5000 P109



SK121



SF121 P123



SM121 P633



SK121 SF  
Ladies Feel Good  
Stretch T-Shirt

96% cotton/4% elastane single jersey.\*  
Stretch fabric for a modern fit.  
Enzyme wash.  
Soft touch.  
Taped neck.  
Soft stretchy ribbed collar.  
Side seams. Longer length.  
Twin needle stitching.  
Tear out label.

Weight: 165 gsm

Size:	XS	S	M	L	XL	XXL
Ladies size:	8	10	12	14	16	18
Chest (to fit):	30/32	32/34	34/36	36/38	38/40	40/42

\*Heather grey 81% cotton/15% viscose/4% elastane.  
\*\*Heather red and heather pink 90% cotton/6% viscose/4% elastane.  
Heather charcoal 60% cotton/36% polyester/4% elastane.  
All other heathers 65% polyester/30% cotton/5% elastane.



# 054 LADIES HEAVY T-SHIRTS

T-SHIRTS

**GD95 [5000L]**

**GILDAN**  
Heavy Cotton™



GD05 P115



GD05B P634



GD05P Online

**GD95 Gildan Ladies Heavy Cotton™ T-Shirt**

100% cotton.\*  
Pre-shrunk.  
Semi-fitted with side seams.  
Seamless twin needle collar.  
Taped neck and shoulders.  
Twin needle sleeves and hem.  
Tear out label.



Weight: White 170 gsm, Cols 180 gsm

<b>Size:</b>	S	M	L	XL	XXL
<b>Ladies size:</b>	8/10	10/12	12/14	14/16	16/20

\*Sport grey 90% cotton/10% polyester. \*\*Heathers 50% cotton/50% polyester.



Sedex

**GD90 [4100L]**

**GILDAN**  
PREMIUM  
Cotton®



GD08 P119



**GD90 Gildan Ladies Premium Cotton® T-Shirt**

100% ringspun cotton.\*  
Pre-shrunk.  
Semi-fitted with side seams.  
Taped neck and shoulders.  
Twin needle sleeves and hem.  
Tear out label.



Weight: White 180 gsm, Cols 185 gsm

<b>Size:</b>	S	M	L	XL	XXL
<b>Ladies size:</b>	8/10	10/12	12/14	14/16	16/18

\*Sport grey 90% cotton/10% polyester.



Sedex

**T8050 Tee Jays Ladies Sof T-Shirt**

100% ringspun combed cotton.  
Ribbed collar with elastane.  
Taped neck and shoulders. Side seams.  
Twin needle sleeves and hem. 60°C wash.



Weight: 185 gsm

<b>Size:</b>	S	M	L	XL	XXL	3XL
<b>Ladies size:</b>	6/8	8/10	10/12	12/14	14/16	16/18

**02080 SOL'S Ladies Imperial Fit T-Shirt**

100% ringspun semi-combed cotton.\*  
Fitted style. Ribbed collar. Taped neck.  
Twin needle stitching. Unbranded size label at neckline.



Weight: 190 gsm

<b>Size:</b>	S	M	L	XL	XXL
<b>Ladies size:</b>	8/10	10/12	12/14	14/16	16/18

\*Grey marl 85% cotton/15% viscose.

\*\*Charcoal marl 60% cotton/40% polyester.



**T8050**

**TEE JAYS**



T8000 P119



NEW  
COLOURS

**02080**

**SOL'S**  
the fair spirit



10580 P123







SS720 [614240]



SS620 P120

**SS720 Fruit of the Loom Ladies Ringspun Premium T-Shirt**

100% ringspun combed cotton.\* Soft touch. Cotton/Lycra® ribbed collar. Shoulder to shoulder taping. Shaped side seams. 60°C wash. Cut out label.



Weight: White 190 gsm, Cols 195 gsm

Size:	XS	S	M	L	XL	XXL
Ladies size:	8	10	12	14	16	18
Chest (to fit):	30	32	34	36	38	40



\*Heather grey 97% cotton/3% polyester. \*\*Ash 99% cotton/1% polyester.

**T580 Tee Jays Ladies Interlock T-Shirt**

100% ringspun combed cotton. In transition to using organic cotton. Enzyme and silicone washed. Fitted style. Narrow ribbed collar with elastane. Side seams. Twin needle sleeves and hem. 60°C wash.



Weight: 220 gsm

Size:	S	M	L	XL	XXL	3XL
Ladies size:	6/8	8/10	10/12	12/14	14/16	16/18



T580



T520 P121



11502



the fair spirit



11500 P117



11770 P634

**11502 SOL'S Ladies Imperial Heavy T-Shirt**

100% ringspun semi-combed cotton.\* Ribbed collar. Taped neck. Side seams. Twin needle sleeves and hem. This item runs small in comparison to some other brands. Please check sizing before decoration.

Weight: 190 gsm



Size:	S	M	L	XL	XXL	3XL▲
Ladies size:	8/10	10/12	12/14	14/16	16/18	18/20

\*Grey marl 85% cotton/15% viscose. \*\*Ash 98% cotton/2% viscose. ▲Available in 3XL.

# 056 LADIES TRI-BLEND T-SHIRTS

T-SHIRTS

**NX6710**

**NL** | NEXT LEVEL  
APPAREL.



NX6010 P130



**NX6710 Next Level  
Ladies Tri-Blend T-Shirt**

50% polyester/25% ringspun combed cotton/25% rayon.

Ladies cut.  
1x1 baby ribbed collar with front cover stitch.  
Taped neck and shoulders.  
Side seams.  
Twin needle stitching.



Weight: 145 gsm

<b>Size:</b>	S	M	L	XL	XXL
<b>Chest (to fit):</b>	29.5	31.5	33.5	36.5	39.5



**BL8413 Bella+Canvas  
Ladies Tri-Blend T-Shirt**

50% polyester/25% airlume combed ringspun cotton/25% rayon.

Ladies fit. Single jersey.  
Narrow 1x1 ribbed collar. Side seams.  
Twin needle sleeves and hem.  
Tear out label.



Weight: 130 gsm

<b>Size:</b>	S	M	L	XL
<b>Ladies size:</b>	6/8	10/12	14/16	18/20
<b>Chest (to fit):</b>	30/32	32/34	34/36	36/38



**BL8413**

**BELLA+CANVAS**



CV3413 P131



CV3413Y Online



**JT001F**

**Just Ts**  
AWDis



JT001 P131



**JT001F AWDIs**

**Ladies Tri-Blend T-Shirt**

50% polyester/25% viscose/25% cotton.\*

Soft touch.  
Ladies fit.  
Ribbed collar.  
Taped neck.  
Side seams.  
Twin needle stitching.  
Unbranded size label.



Weight: 160 gsm

<b>Size:</b>	XS	S	M	L	XL	XXL**
<b>Ladies size:</b>	8	10	12	14	16	18



\*Heather black 40% viscose/40% cotton/20% polyester. \*\*Available in XXL.



**NX6610**

**NL** NEXT LEVEL  
APPAREL



NX6210 P126



NX3312 Online

**NX6610 Next Level**

**Ladies CVC T-Shirt**

60% ringspun combed cotton/40% polyester.  
Ladies cut.  
1x1 baby ribbed collar.  
Taped neck and shoulders.  
Side seams.  
Twin needle sleeves and hem.  
Tear out label.



Tear Out



Weight: 145 gsm

Size:	XS	S	M	L	XL	XXL
Chest (to fit):	30	32	34	36	39	42

**BLC6400 Bella+Canvas**

**Ladies Relaxed CVC T-Shirt**

52% airlume combed ringspun cotton/48% polyester.  
Pre-shrunk. Relaxed fit.  
Ribbed collar. Taped neck. Side seams.  
Twin needle sleeves and hem.  
Tear out label.



Tear Out



Weight: 145 gsm

Size:	S	M	L	XL	XXL*
Ladies size:	6/8	10/12	14/16	18/20	22/24
Chest (to fit):	30/32	32/34	34/36	36/38	38/40

\* Available in XXL.

Please note, the solid colourways are now a separate style BLC6400, p154.



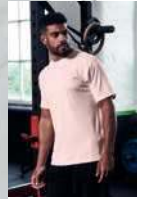
**BLC6400**

**BELLA+CANVAS**



**JC005**

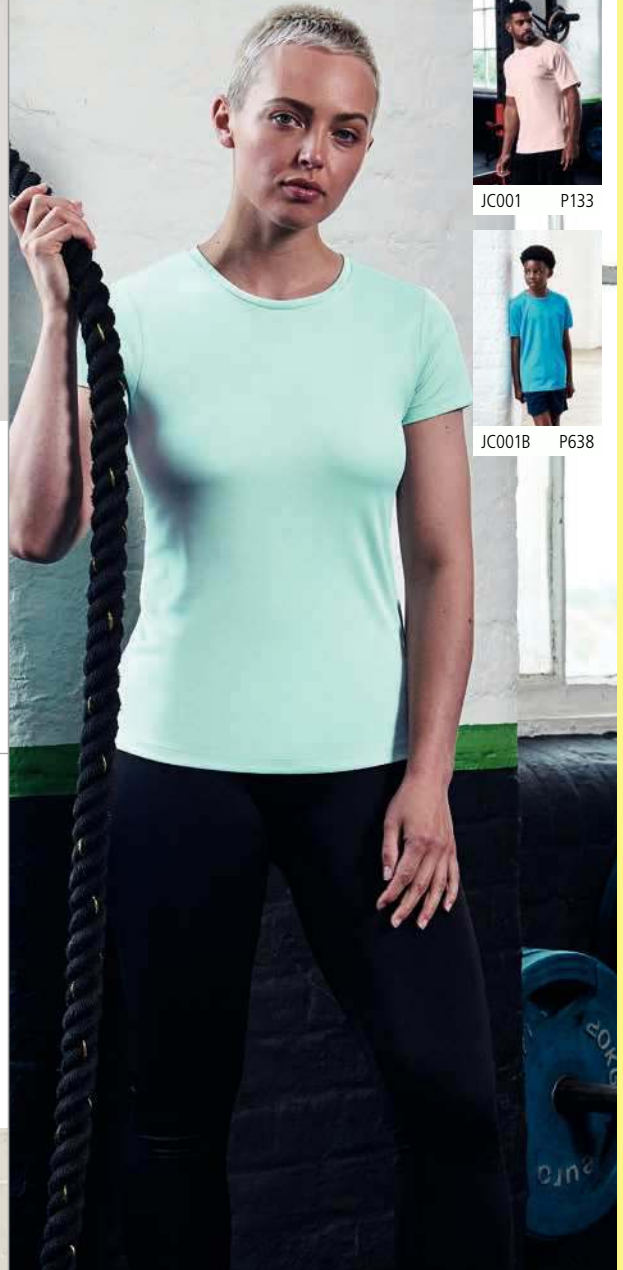
**JustCool**  
AWDis



JC001 P133



JC001B P638



**JC005 AWDIs**

**Ladies Cool T-Shirt**

100% polyester.  
Neoteric™ textured fabric with inherent wickability.  
UPF 40+ UV protection.  
Ladies fit.  
Self fabric collar.  
Taped neck.  
Twin needle curved back hem.  
Tear out label.



Weight: 140 gsm

Size:	XS	S	M	L	XL	XXL*
Ladies size:	8	10	12	14	16	18

\* Available in XXL.

Tear Out



Sedex

AW-APPROVED  
VEGAN



**SOL'S®**

the fair spirit



01406 SOL'S LADIES MELBA  
T-SHIRT

P161

100% ringspun combed cotton



**SK233**



**SK233 SF**

**Ladies Drop Tail T-Shirt**

60% cotton/40% polyester.\*  
Single jersey. Short sleeve with cut out shoulders. Side seams.  
Twin needle stitching at neckline, sleeves and hem.  
Curved drop hem. Tear out label.



Weight: 140 gsm

Size:	XS	S	M	L	XL	XXL
Ladies size:	8	10	12	14	16	18
Chest (to fit):	30/32	32/34	34/36	36/38	38/40	40/42

\*Heather grey 85% cotton/15% viscose.

Tear Out



**T455 Tee Jays**

**Ladies Fashion Stretch Long Length T-Shirt**

92% ringspun combed cotton/8% elastane.  
Enzyme washed. Subtle V neck. Narrow ribbed collar with elastane.  
Taped neck. Side seams. Longer length. Twin needle sleeves and hem.



Weight: 175 gsm

Size:	XS	S	M	L	XL	XXL
Ladies size:	4/6	6/8	8/10	10/12	12/14	14/16

**T455**

**TEE JAYS**





SK213



**SK213 SF**  
**Ladies Slounge T-Shirt**

100% cotton single jersey.  
Self fabric bound scoop neckline. No sleeve seams.  
Folded sleeve ends. Side seams.  
Self fabric tie to left front.  
Tear out label.

Weight: 140 gsm

Size:	S	M	L	XL
Ladies size:	10	12	14	16
Chest (to fit):	32/34	34/36	36/38	38/40



Sedex



BL8804

BELLA+CANVAS

**BL8804 Bella+Canvas**  
**Ladies Flowy Rolled Cuff Muscle T-Shirt**

65% polyester/35% viscose.  
Relaxed draped fit. Ribbed collar.  
Rolled up cuffs. Side seams.  
Raw edge drop hem. Tear out label.

Weight: 125 gsm

Size:	S	M	L	XL
Ladies size:	6/8	10/12	14/16	18/20
Chest (to fit):	30/32	32/34	34/36	36/38



**T5063 Tee Jays**  
**Ladies Roll-Up T-Shirt**

100% ringspun combed cotton.\*  
Relaxed fashion fit. Narrow ribbed wide neckline. Taped neck and shoulders.  
Roll-up sleeves with bar tacks. Side seams. Twin needle hem.

Weight: 160 gsm

Size:	S	M	L	XL	XXL
Ladies size:	6/8	8/10	10/12	12/14	14/16

\*Heather grey 85% cotton/15% viscose.



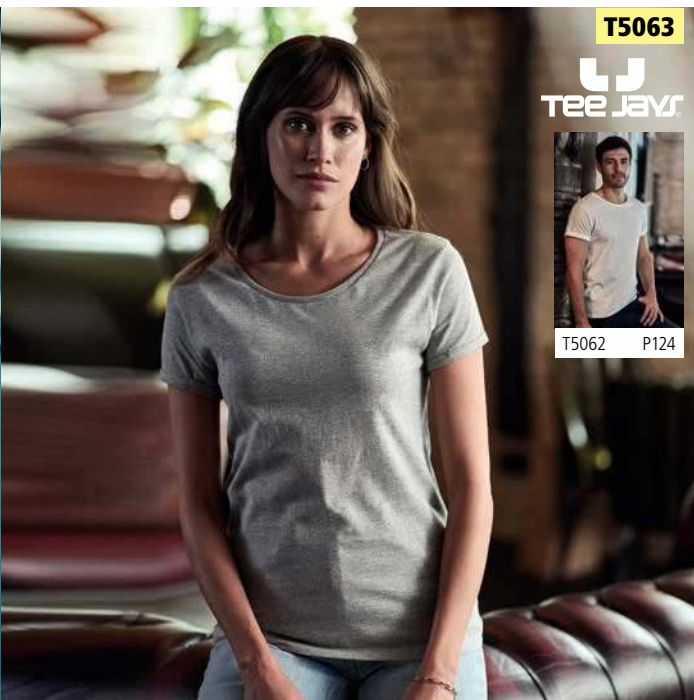
**01406 SOL'S**  
**Ladies Melba T-Shirt**

100% ringspun combed cotton.\*  
Sheer jersey. Taped neck. No sleeve seams.  
Turned up sleeves. Twin needle hem.  
Unbranded size label at neckline.

Weight: 115 gsm

Size:	S	M	L
Ladies size:	8/10	10/12	12/14

\*Grey marl 85% cotton/15% viscose.



T5063

tee jays



T5062 P124



01406

SOL'S  
the fair spirit

# 060 T-SHIRT DRESSES

T-SHIRTS

**SK257**



**SK257 SF**  
**Ladies T-Shirt Dress**

100% cotton.  
Single jersey. Shaped to fit. Scoop neckline.  
Side seams. Cover stitched sleeves and hem. Tear out label.



Weight: 180 gsm

Size:	S	M	L	XL
Ladies size:	10	12	14	16
Chest (to fit):	32/34	34/36	36/38	38/40



**SK104**



**SK104 SF**  
**Ladies Tank Dress**

96% cotton/4% elastane single jersey.  
Bound neckline and armholes. Can either be worn as a long length vest or short dress. Side seams. Twin needle stitching. Tear out label.



Weight: 190 gsm

Size:	S	M	L	XL
Ladies size:	10	12	14	16
Chest (to fit):	32/34	34/36	36/38	38/40



**KB388 Kariban**  
**Ladies T-Shirt Dress**

100% combed cotton jersey.\*  
Comfort fit. Wide neckline. Taped neck.  
Turned up sleeves. Twin needle curved hem. Tag free.



Weight: 150 gsm

Size:	S/M	L/XL
Ladies size:	10/12	12/14



\*Light grey heather 85% cotton/15% viscose.

**KB388**

**KARIBAN**





**NX1560**

**NL** | NEXT LEVEL APPAREL

**NX1560 Next Level Ladies Ideal Dolman T-Shirt**

60% ringspun combed cotton/40% polyester. Relaxed fit. 1x1 baby ribbed neckline. Taped neck. Dolman sleeves. Side seams. Twin needle sleeves and hem. Curved hem. Tear out label.

Weight: 135 gsm

Size:	XS	S	M	L	XL	XXL
Chest (to fit):	35	37	38	40	44	47



**NX6760**

**NL** | NEXT LEVEL APPAREL

**NX6760 Next Level Ladies Tri-Blend Dolman T-Shirt**

50% polyester/25% ringspun combed cotton/25% rayon. Relaxed fit. 1x1 baby ribbed neckline with front cover stitch. Dolman sleeves. Side seams. Twin needle stitching.

Weight: 145 gsm

Size:	XS	S	M	L	XL	XXL	3XL
Chest (to fit):	35	37	38	40	44	47	50



**11398 SOL'S Ladies Marilyn Long T-Shirt**

100% ringspun cotton. Self fabric wide neckline. Taped neck. Kimono sleeves. Longer length. Twin needle sleeves and hem. Unbranded size label at neckline. This item runs small in comparison to some other brands. Please check sizing before decoration.

Weight: 115 gsm

Size:	S	M	L	XL	XXL
Ladies size:	8/10	10/12	12/14	14/16	16/18



**TL527 Tombo Scoop Neck T-Shirt**

68% polyester/28% viscose/4% polyurethane. Super soft fabric. Oversized style. Scoop neckline. Dropped shoulder seams. Curved drop hem. Tear out label.

Weight: 160 gsm

Size:	XS	S	M	L	XL	XXL	3XL
Ladies size:	8	10	12	14	16	18	20
Chest (to fit):	30/32	32/34	34/36	36/38	38/40	40/42	42/44



**11398**

**SOL'S**  
the fair spirit



**TL527**

**T**  
**TOMBO**

# 062 CROPPED T-SHIRTS

T-SHIRTS

**NX5080**

**NL** | NEXT LEVEL  
APPAREL.



**NX5080 Next Level Ladies Festival Cali Cropped T-Shirt**

65% polyester/35% ringspun combed cotton. Relaxed fit. 1x1 baby ribbed collar. Twin needle sleeves. Side seams. Cropped length. Raw edge hem. Tear out label.



Weight: 120 gsm

Size:	XS	S	M	L	XL	XXL
Chest (to fit):	30	32	34	36	39	42



**BL8882**

**BELLA+CANVAS**



**BL8882 Bella+Canvas Ladies Flowy Cropped T-Shirt**

65% polyester/35% viscose. Relaxed fit. Ribbed collar. Taped neck and shoulders. Side seams. Cropped length. Twin needle stitching. Tear out label.



Weight: 125 gsm

Size:	S	M	L	XL
Ladies size:	6/8	10/12	14/16	18/20
Chest (to fit):	30/32	32/34	34/36	36/38



**JT006 AWDIs**

**Ladies Tri-Blend Cropped T-Shirt**

50% polyester/25% cotton/25% viscose.\* Ladies fit. Ribbed neckline. Taped neck. Cropped length. Twin needle sleeves and hem. Unbranded size label.



Weight: 160 gsm

Size:	XS	S	M	L	XL
Ladies size:	8	10	12	14	16



\*Heather black 40% cotton/40% viscose/20% polyester.

**SK237 SF**

**Ladies Cropped Boxy T-Shirt**

60% cotton/40% polyester. Single jersey. Oversized fit. Stretch ribbed collar. Taped neck. Side seams. Cropped length. Twin needle sleeves and hem. Tear out label.



Weight: 140 gsm

Size:	XXS	XS	S	M	L	XL
Ladies size:	6	8	10	12	14	16
Chest (to fit):	28/30	30/32	32/34	34/36	36/38	38/40



**JT006**

**Just Ts**  
AWDis



**SK237**







01399

**SOL'S**  
the fair spirit



01398 P141



01400 P635

**01399 SOL'S**  
**Ladies Miles Striped T-Shirt**

100% ringspun combed cotton.\*  
Ladies fit. Self fabric neckline. Taped neck. Twin needle stitching.  
Unbranded size label at neckline.  
This item runs small in comparison to some other brands.  
Please check sizing before decoration.



Weight: 150 gsm

<b>Size:</b>	XS	S	M	L	XL	XXL
<b>Ladies size:</b>	6/8	8/10	10/12	12/14	14/16	16/18

\*Ash/lemon 98% cotton/2% viscose.



11195

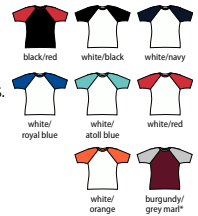
**SOL'S**  
the fair spirit



11190 P139

**11195 SOL'S**  
**Ladies Milky Contrast Baseball T-Shirt**

100% ringspun semi-combed cotton.\*  
Contrast ribbed collar. Taped neck. Contrast raglan sleeves.  
Side seams. Twin needle sleeves and hem.  
This item runs small in comparison to some other brands.  
Please check sizing before decoration.



Weight: 150 gsm

<b>Size:</b>	S	M	L	XL	XXL
<b>Ladies size:</b>	8/10	10/12	12/14	14/16	16/18

\*Grey marl 85% cotton/15% viscose.

**01187 SOL'S**  
**Ladies Camo T-Shirt**

100% ringspun semi-combed cotton.  
Taped neck. Side seams. Twin needle stitching.  
Unbranded size label at neckline.  
This item runs small in comparison to some other brands.  
Please check sizing before decoration.



Weight: 150 gsm

<b>Size:</b>	S	M	L	XL	XXL
<b>Ladies size:</b>	8/10	10/12	12/14	14/16	16/18



**03109 SOL'S**  
**Ladies Rainbow T-Shirt**

100% semi-combed ringspun cotton.  
1x1 ribbed collar. Ribbed cuffs with contrast stripes.  
Side seams. Twin needle hem. Unbranded size label at neckline.  
This item runs small in comparison to some other brands.  
Please check sizing before decoration.



Weight: 155 gsm

<b>Size:</b>	S	M	L	XL	XXL	3XL
<b>Ladies size:</b>	8/10	10/12	12/14	14/16	16/18	18/20



01187

**SOL'S**  
the fair spirit



01188 P140



03109

**SOL'S**  
the fair spirit



03108 P138

# 064 LADIES V NECK T-SHIRTS

T-SHIRTS

03098

**SOL'S**<sup>®</sup>

the fair spirit



**03098 SOL'S**

**Ladies Motion V Neck T-Shirt**

70% cotton/30% viscose.  
Relaxed flowy style. Taped neck. Side seams.  
Twin needle stitching. Unbranded size label at neckline.  
This item runs small in comparison to some other brands.  
Please check sizing before decoration.



Weight: 120 gsm

<b>Size:</b>	XS	S	M	L	XL	XXL	3XL
<b>Ladies size:</b>	6/8	8/10	10/12	12/14	14/16	16/18	18/20



**GD78 [64V00L]**

**GILDAN**<sup>®</sup>  
Softstyle<sup>®</sup>



GD10 P135



**GD78 Gildan**

**SoftStyle<sup>®</sup> Ladies V Neck T-Shirt**

100% ringspun cotton.\*  
Pre-shrunk. Fitted style with side seams. Narrow  
1/2" ribbed neckline. Taped neck and shoulders.  
Twin needle sleeves and hem. Tear out label.

Weight: White 144 gsm, Cols 153 gsm

<b>Size:</b>	S	M	L	XL	XXL
<b>Ladies size:</b>	6	6/8	10	12/14	14/16



Sedex<sup>2</sup>

\*Sport grey 90% cotton/10% polyester. \*\*Dark heather 65% polyester/35% cotton.

**NX1540 Next Level**

**Ladies Ideal V Neck T-Shirt**

60% ringspun combed cotton/40% polyester.  
1x1 baby ribbed V neckline.  
Taped neck and shoulders.  
Side seams. Twin needle stitching.  
Tear out label.

Weight: 135 gsm

<b>Size:</b>	XS	S	M	L	XL	XXL
<b>Chest (to fit):</b>	30	32	34	36	39	42



**NX1540**

**NL** | **NEXT LEVEL**  
APPAREL.





11388

**SOL'S**  
the fair spirit



11150 P135

**11388 SOL'S**

**Ladies Moon V Neck T-Shirt**

100% ringspun semi-combed cotton.\*  
Ladies cut with side seams.  
Ribbed V neckline.  
Taped neck.  
Twin needle cap sleeves and hem.  
This item runs small in comparison to some other brands. Please check sizing before decoration.

Weight: 150 gsm

Size:	S	M	L	XL	XXL	3XL
Ladies size:	8/10	10/12	12/14	14/16	16/18	18/20

\*Grey marl 85% cotton/15% viscose.



SK122



SF122 Online

**SK122 SF**

**Ladies Feel Good Stretch V Neck T-Shirt**

96% cotton/4% elastane single jersey.\*  
Stretch fabric for a modern fit. Enzyme wash. Soft touch. Soft stretchy ribbed V neckline. Taped neck. Side seams. Longer length. Twin needle stitching. Tear out label.

Weight: 165 gsm

Size:	XS	S	M	L	XL	XXL
Ladies size:	8	10	12	14	16	18
Chest (to fit):	30/32	32/34	34/36	36/38	38/40	40/42

\*Heather grey 81% cotton/15% viscose/4% elastane.



**SS702 Fruit of the Loom**

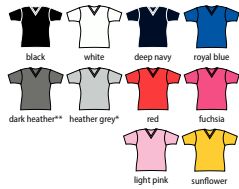
**Lady Fit Value V Neck T-Shirt**

100% cotton.\*  
Ladies fit. Cotton/Lycra® ribbed low V neckline.  
Taped neck. Shaped side seams. Twin needle sleeves and hem. Cut out label.

Weight: White 160 gsm, Cols 165 gsm

Size:	XS	S	M	L	XL	XXL
Ladies size:	8	10	12	14	16	18
Chest (to fit):	30	32	34	36	38	40

\*Heather grey 97% cotton/3% polyester. \*\*Dark heather 50% cotton/50% polyester.



**GD91 Gildan**

**Ladies Premium Cotton® V Neck T-Shirt**

100% ringspun combed cotton.\*  
Pre-shrunk. Semi-fitted style with side seams.  
Mitre V neckline. Taped neck and shoulders.  
Twin needle sleeves and hem.  
Tear out label (some colours in transition).

Weight: White 180 gsm, Cols 185 gsm

Size:	S	M	L	XL	XXL
Ladies size:	8/10	10/12	12/14	14/16	16/18

\*Sport grey 90% cotton/10% polyester.



Sedex

**SS702 [613980]**



SS7 P135



**GD91 [4100VL]**

**GILDAN**  
PREMIUM  
Cotton®



GD09 P135



# Just Ts<sup>®</sup> AWDis

FOR PLENTY OF CHOICE •  
**30**  
FASHION  
COLOURS •  
FOR PLENTY OF CHOICE

**JT100**  
AWDis  
The 100 T-Shirt

P108

# 6 NEW COLOURS



11425

**SOL'S**  
the fair spirit



11420 P142



**11425 SOL'S Ladies Majestic Long Sleeve T-Shirt**

100% ringspun semi-combed cotton.\*  
Fitted cut with side seams.  
Low ribbed collar. Taped neck.  
Twin needle sleeves and hem.  
This item runs small in comparison to some other brands.  
Please check sizing before decoration.



Weight: 150 gsm

Size:	S	M	L	XL	XXL
Ladies size:	8/10	10/12	12/14	14/16	16/18

\*Grey marl 85% cotton/15% viscose.

SK124



SF124 P143



**SK124 SF**

**Ladies Feel Good Long Sleeve Stretch T-Shirt**

96% cotton/4% elastane.\*  
Single jersey. Enzyme washed. Soft touch.  
Soft stretchy ribbed collar. Taped neck. Side seams. Longer length.  
Twin needle sleeves and hem. Tear out label.



Weight: 165 gsm

Size:	XS	S	M	L	XL	XXL
Ladies size:	8	10	12	14	16	18
Chest (to fit):	30/32	32/34	34/36	36/38	38/40	40/42

\*Heather blue 65% polyester/30% cotton/5% elastane.  
\*\*Heather grey 81% cotton/15% viscose/4% elastane.

Sedex



PRE-APPROVED VEGAN

**T590 Tee Jays**

**Ladies Long Sleeve Interlock T-Shirt**

100% ringspun combed cotton.  
In transition to using organic cotton. Enzyme and silicone washed.  
Fitted style. Narrow ribbed collar with elastane. Side seams.  
Twin needle sleeves and hem. 60°C wash.



Weight: 220 gsm

Size:	S	M	L	XL	XXL	3XL
Ladies size:	6/8	8/10	10/12	12/14	14/16	16/18



T590

**TEE JAYS**



T530 P33



# 068 LADIES LONG SLEEVE T-SHIRTS

T-SHIRTS

**JT002F**

**Just Ts**  
AWDis



JT002 P145



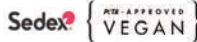
**JT002F AWDIs**

**Ladies Long Sleeve Tri-Blend T-Shirt**

50% polyester/25% viscose/25% cotton.  
Soft touch. Ladies fit. Ribbed collar.  
Taped neck. Side seams.  
Twin needle stitching.  
Unbranded size label.

Weight: 160 gsm

Size:	XS	S	M	L	XL
Ladies size:	8	10	12	14	16



**BL8852**

**BELLA+CANVAS**



**BL8852 Bella+Canvas**

**Ladies Flowy 2x1 Long Sleeve T-Shirt**

65% polyester/35% viscose.  
Relaxed shape. Ribbed scoop neckline.  
Drop shoulder style. 2x1 ribbed knit sleeves.  
Twin needle curved hem. Tear out label.

Weight: 125 gsm

Size:	S	M	L	XL
Ladies size:	6/8	10/12	14/16	18/20
Chest (to fit):	30/32	32/34	34/36	36/38



**SK263 SF**

**Ladies Long Sleeve Slounge Top**

100% viscose single jersey.  
Self fabric scoop neckline. Elastane reinforced drop shoulder seams.  
Flatlock stitched shoulders, side seams and centre back seam.  
Twin needle neck, sleeves and curved hem. Tear out label.

Weight: 170 gsm

Size:	XS	S	M	L	XL
Ladies size:	8	10	12	14	16
Chest (to fit):	30/32	32/34	34/36	36/38	38/40



Sedex



**BL8850 Bella+Canvas**

**Ladies Flowy Long Sleeve T-Shirt**

65% polyester/35% viscose.  
Ribbed neckline, cuffs and hem. Dolman sleeves.  
Centre back seam. Tear out label.

Weight: 125 gsm

Size:	S	M	L	XL
Ladies size:	6/8	10/12	14/16	18/20
Chest (to fit):	30/32	32/34	34/36	36/38



**SK263**



**BL8850**

**BELLA+CANVAS**





JT016

JustTs  
AWDis



JT016 AWDIs

**Ladies Long Sleeve Cropped T-Shirt**

50% polyester/25% viscose/25% cotton.\*  
Ladies fit. Ribbed crew neck. Taped neck. Cropped length. Cuffed sleeves.  
Twin needle stitching. Unbranded size label at neckline.



Weight: 160 gsm

Size:	XS	S	M	L	XL
Ladies size:	8	10	12	14	16

\*Heather black 40% viscose/40% cotton/20% polyester.



JC116 AWDIs

**Ladies Cool Cross Back Long Sleeve T-Shirt**

60% cotton/40% polyester.  
UrbanCool™ lightweight fabric. UPF 40+ UV protection.  
Unique cross back style. Cropped length. Self fabric cuffs and hem with dropped curve at front. Flatlock stitching. Tear out label.



Weight: 160 gsm

Size:	XS	S	M	L	XL
Ladies size:	8	10	12	14	16



JC116

JustCool  
AWDis



NX7481S

NL | NEXT LEVEL  
APPAREL™

NX7481S Next Level

**Ladies Long Sleeve Cropped T-Shirt**

100% ringspun combed cotton.  
Soft touch. Pre-shrunk. Relaxed fit. 1x1 baby rib collar and cuffs. Taped neck and shoulders. Side seams. Cropped length. Twin needle hem. Tear out label.



Weight: 175 gsm

Size:	XS	S	M	L	XL	XXL
Chest (to fit):	30	32	34	36	39	42



# 070 T-SHIRTS

T-SHIRTS





# LADIES LONG SLEEVE 071 CONTRAST T-SHIRTS

T-SHIRTS

SK271



SF271 P147



SM271 P635



**SK271 SF**

**Ladies Long Sleeve Baseball T-Shirt**

100% cotton.\*  
Single jersey. Contrast stretch ribbed collar. Taped neck.  
Contrast raglan sleeves. Shaped side seams.  
Longer length. Twin needle curved hem. Tear out label.

Weight: 140 gsm

<b>Size:</b>	XS	S	M	L	XL
<b>Ladies size:</b>	8	10	12	14	16
<b>Chest (to fit):</b>	30/32	32/34	34/36	36/38	38/40

\*Heather grey 85% cotton/15% viscose.



Sedex

Tear  
Out

100% APPROVED  
VEGAN

01403

**SOL'S**  
the fair spirit



01402 P146



**01403 SOL'S**

**Ladies Marine Long Sleeve Striped T-Shirt**

100% ringspun combed cotton.  
Self fabric neckline. Taped neck. Twin needle stitching.  
Unbranded size label at neckline.  
This item runs small in comparison to some other brands.  
Please check sizing before decoration.



Weight: 150 gsm

No Label

<b>Size:</b>	XS	S	M	L	XL	XXL
<b>Ladies size:</b>	6/8	8/10	10/12	12/14	14/16	16/18

**02943 SOL'S**

**Ladies Milky Contrast Long Sleeve T-Shirt**

100% semi-combed ringspun cotton.  
Contrast elastane ribbed collar. Contrast raglan sleeves.  
Side seams. Twin needle sleeves and hem. Unbranded size label.  
This item runs small in comparison to some other brands.  
Please check sizing before decoration.



Weight: 150 gsm

No Label

<b>Size:</b>	S	M	L	XL	XXL
<b>Ladies size:</b>	8/10	10/12	12/14	14/16	16/18

02943

**SOL'S**  
the fair spirit



02942 P147



# 072 LADIES VESTS & TANKS

T-SHIRTS

**SK236**



SM236 P636



**SK236 SF**  
**Ladies Fashion Crop Top**

88% polyester/12% elastane.  
Single jersey. Jacquard elasticated band. Twin needle stitching.  
White area suitable for sublimation printing. Tear out label.

Weight: 300 gsm

Size:	XS	S	M	L
Ladies size:	8	10	12	14
Chest (to fit):	30/32	32/34	34/36	36/38



Sedex

Tear Out



**SK106**



SM106 P636



**SK106 SF**  
**Ladies Cropped Top**

93% cotton/7% elastane.  
Racer front and back neckline. Cropped length.  
Twin needle stitching. Tear out label.

Weight: 190 gsm

Size:	XS	S	M	L	XL
Ladies size:	8	10	12	14	16
Chest (to fit):	30/32	32/34	34/36	36/38	38/40



Sedex

Tear Out



**SK150 SF**

**Ladies Stretch Rib Racer Back Vest**

96% cotton/4% elastane.  
Modern fitted style. 2x1 rib. Racer back.  
Ribbed bound neckline and armholes.  
Longer length. Twin needle hem. Tear out label.

Weight: 240 gsm

Size:	S	M	L
Ladies size:	10	12	14
Chest (to fit):	32/34	34/36	36/38



Sedex

Tear Out



**SK126 SF**

**Ladies Feel Good Stretch Spaghetti Vest**

96% cotton/4% elastane.  
Single jersey. Enzyme washed. Slim fit.  
Bound neckline and armholes. Adjustable spaghetti straps.  
Side seams. Twin needle stitching. Tear out label.

Weight: 165 gsm

Size:	XS	S	M	L	XL
Ladies size:	8	10	12	14	16
Chest (to fit):	30/32	32/34	34/36	36/38	38/40



Sedex

Tear Out



**SK150**



**SK126**



SM126 P637





11475

**SOL'S**  
the fair spirit



11465 P149

**11475 SOL'S**

**Ladies Jane Tank Top**

100% ringspun semi-combed cotton. Ribbed bound neckline and armholes. Side seams. Twin needle hem. This item runs small in comparison to some other brands. Please check sizing before decoration.

Weight: 150 gsm

Size:	S	M	L	XL
Ladies size:	8/10	10/12	12/14	14/16



**SS704 Fruit of the Loom**

**Lady Fit Value Vest**

100% cotton.\* Ladies fit. Self fabric bound neckline and armholes. Shaped side seams. Twin needle hem. Cut out label.

Weight: White 160 gsm, Cols 165 gsm

Size:	XS	S	M	L	XL	XXL
Ladies size:	8	10	12	14	16	18
Chest (to fit):	30	32	34	36	38	40



\*Heather grey 97% cotton/3% polyester.

SS704 [613760]



SS18 P149



SK123 SF

**Ladies Feel Good Stretch Vest**

96% cotton/4% elastane.\* Single jersey. Stretch fabric for a modern shaped fit. Soft touch. Enzyme washed. Self fabric bound neckline and armholes. Side seams. Longer length. Twin needle hem. Tear out label.

Weight: 165 gsm

Size:	XS	S	M
Ladies size:	8	10	12
Chest (to fit):	30/32	32/34	34/36
Size:	L	XL	XXL
Ladies size:	14	16	18
Chest (to fit):	36/38	38/40	40/42

\*Heather grey 81% cotton/15% viscose/4% elastane.



GD77 Gildan

**Ladies SoftStyle® Tank Top**

100% ringspun cotton. Pre-shrunk. Fitted style with side seams. Ribbed bound neckline and armholes. Twin needle hem. Tear out label.

Weight: White 144 gsm, Cols 153 gsm

Size:	S	M	L	XL	XXL
Ladies size:	6	6/8	10	12/14	14/16



GD77 [64200L]



SF123 Online



SM123 P636



GD12 P149



JC015 AWDIs  
**Ladies Cool Vest**

100% polyester. Neoteric™ textured fabric with inherent wickability. UPF 40+ UV protection. Ladies fit. Racer back style. Self fabric bound neckline and armholes. Twin needle hem. Tear out label.

Weight: 140 gsm

Size:	XS	S	M	L	XL
Ladies size:	8	10	12	14	16



JC015



JC007 P148



JC007B P636

# 074 LADIES VESTS & TANKS

T-SHIRTS

01223



**SOL'S**  
the fair spirit

**01223 SOL'S**  
**Unisex Jamaica Tank Top**

100% polyester.  
Deep armholes.  
Side seams.  
Suitable for sublimation printing.

Weight: 120 gsm

Size:	XS	S	M
Chest (to fit):	35/36	36/38	38/40
Size:	L	XL	XXL
Chest (to fit):	41/42	43/44	45/47



01826

**SOL'S**  
the fair spirit



11465 P149



JT015



**Just T's**  
AWDis

**JT015 AWDIs**  
**Ladies Tri-Blend Vest**

50% polyester/25% cotton/25% viscose.\*  
Ladies fit. Scoop neckline. Bound neckline and armholes. Twin needle hem. Unbranded size label.

Weight: 160 gsm

Size:	XS	S	M	L	XL	XXL
Ladies size:	8	10	12	14	16	18

\*Heather black 40% cotton/40% viscose/20% polyester.



JT007 P149

01826 SOL'S

**Ladies Justin Vest**

100% ringspun semi-combed cotton.\*  
Ladies fit. Ribbed bound neckline and armholes. Racer back style. Tubular body. Twin needle hem. This item runs small in comparison to some other brands. Please check sizing before decoration.

Weight: 150 gsm

Size:	XS	S	M	L	XL	XXL
Ladies size:	6/8	8/10	10/12	12/14	14/16	16/18

\*Grey marl 85% cotton/15% viscose.



SK234 SF

**Ladies Slounge Vest**

60% cotton/40% polyester.  
Single jersey. Relaxed fit. Self fabric bound scoop neckline and armholes. Low scoop back. Side seams. Twin needle curved drop hem. Tear out label.

Weight: 140 gsm

Size:	XS	S	M	L	XL	XXL
Ladies size:	8	10	12	14	16	18
Chest (to fit):	30/32	32/34	34/36	36/38	38/40	40/42



BL8430



**BELLA+CANVAS**

**BL8430 Bella+Canvas**  
**Ladies Tri-Blend Racer Back Tank Top**

50% polyester/25% airlume combed ringspun cotton/25% rayon.  
Single jersey.  
Racer back style.  
Tear out label.

Weight: 130 gsm

Size:	S	M	L	XL
Ladies size:	6/8	10/12	14/16	18/20
Chest (to fit):	30/32	32/34	34/36	36/38



SK234





10579

**SOL'S**  
the fair spirit

**10579 SOL'S Ladies Moka Tank Top**

100% ringspun combed cotton. Loose fit. Sheer jersey. Racer back style. Self fabric bound neckline and armholes. Side seams. Curved hem. Unbranded size label at neckline. This item runs small in comparison to some other brands. Please check sizing before decoration.



Weight: 115 gsm

Size:	XS	S	M	L	XL
Ladies size:	6/8	8/10	10/12	12/14	14/16



**NX1533 Next Level Ladies Ideal Racer Back Tank Top**

60% ringspun combed cotton/40% polyester. Racer back style. Self fabric bound neckline and armholes. Side seams. Twin needle curved hem. Tear out label.



Weight: 135 gsm

Size:	XS	S	M	L	XL	XXL
Chest (to fit):	30	32	34	36	39	42



**NX1533**

**NL** | **NEXT LEVEL**  
APPAREL.



BL8800

**BELLA+CANVAS**



BL8800Y Online

**BL8800 Bella+Canvas Ladies Flowy Racer Back Tank Top**

65% polyester/35% viscose. \* Relaxed draped fit. Racer back style with sheering at seam. Overlock stitched hem. Tear out label.



Weight: Cols 125 gsm, Marble 120 gsm

Size:	S	M	L	XL
Ladies size:	6/8	10/12	14/16	18/20
Chest (to fit):	30/32	32/34	34/36	36/38

\*Marble 91% polyester/9% cotton.



**02944 SOL'S Ladies Jade Tank Top**

100% polyester. Cotton feel fabric. Lightweight. Racer back style. Side seams. Curved hem. Overlock stitching. Unbranded size label. Suitable for sublimation printing.



Weight: 130 gsm

Size:	0	1	2
Ladies size:	XS/S	M/L	XL/XXL



**02944**

**SOL'S**  
the fair spirit



# 076 LADIES VESTS & TANKS

T-SHIRTS

**SK232**



**SK232 SF**  
**Ladies High Neck Vest**

60% cotton/40% polyester.\*  
Single jersey. Stretch ribbed neckline.  
Raw edge armholes and hem.  
Side seams. Tear out label.

Weight: 140 gsm

Size:	XS	S	M
Ladies size:	8	10	12
Chest (to fit):	30/32	32/34	34/36
Size:	L	XL	XXL
Ladies size:	14	16	18
Chest (to fit):	36/38	38/40	40/42

\*Heather grey 85% cotton/15% viscose.



Tear Out



SF232 P148

**BL8803**



**BELLA+CANVAS**

**BL8803 Bella+Canvas**  
**Ladies Flowy Scoop Muscle Tank Top**

65% polyester/35% viscose.\*  
Relaxed shape.  
Low cut armholes.  
Side seams.  
Twin needle curved hem.  
Tear out label.

Weight: Cols 125 gsm, Marble 120 gsm

Size:	S	M	L	XL
Ladies size:	6/8	10/12	14/16	18/20
Chest (to fit):	30/32	32/34	34/36	36/38

\*Marble 91% polyester/9% cotton.



Tear Out

**BL6682**



**BELLA+CANVAS**

**BL6682 Bella+Canvas**  
**Ladies Racer Back Cropped Tank Top**

52% airlume combed ringspun cotton/48% polyester.  
Relaxed shape.  
Racer back style.  
Raw edge armholes.  
Side seams.  
Cropped length.  
Twin needle hem.  
Tear out label.

Weight: 125 gsm

Size:	S	M	L	XL
Ladies size:	6/8	10/12	14/16	18/20
Chest (to fit):	30/32	32/34	34/36	36/38



Tear Out

**BL6008**

**BELLA+CANVAS**



**BL6008 Bella+Canvas**

**Ladies Jersey Racer Back Tank Top**

100% airlume combed ringspun cotton.\*  
Pre-shrunk. Relaxed fit. Racer back style.  
Side seams. Twin needle hem. Tear out label.

Weight: 145 gsm



Size:	S	M	L	XL
Ladies size:	6/8	10/12	14/16	18/20
Chest (to fit):	30/32	32/34	34/36	36/38

\*Athletic heather 90% airlume combed ringspun cotton/10% polyester.

\*\*Dark grey heather and heather mauve 52% airlume combed ringspun cotton/48% polyester.



Tear Out

**BL8809 Bella+Canvas**

**Ladies Flowy High Neck Tank Top**

65% polyester/35% viscose.  
Relaxed draped fit. High neck style. Spaghetti straps.  
Side seams. Twin needle hem. Tear out label.

Weight: 125 gsm



Size:	S	M	L	XL
Ladies size:	6/8	10/12	14/16	18/20
Chest (to fit):	30/32	32/34	34/36	36/38



Tear Out

**BL8809**

**BELLA+CANVAS**





**BL6003**  
**BELLA+CANVAS**



**BL6003 Bella+Canvas Ladies Muscle Jersey Tank Top**  
100% airlume combed ringspun cotton.\*  
Pre-shrunk. Relaxed fit. Low cut armholes.  
Side seams. Twin needle hem. Tear out label.

Weight: 145 gsm

<b>Size:</b>	S	M	L	XL
<b>Ladies size:</b>	6/8	10/12	14/16	18/20
<b>Chest (to fit):</b>	30/32	32/34	34/36	36/38



Tear Out

\*Athletic heather 90% airlume combed ringspun cotton/10% polyester.  
\*\*All other heathers 52% airlume combed ringspun cotton/48% polyester.



**NX5013**



**NX5013 Next Level Ladies Festival Muscle Tank Top**

65% polyester/35% ringspun combed cotton.  
Relaxed fit. 1x1 baby ribbed collar.  
Oversized low cut armholes.  
Side seams. Twin needle curved back hem. Tear out label.

Weight: 120 gsm

<b>Size:</b>	XS	S	M	L	XL	XXL
<b>Chest (to fit):</b>	30	32	34	36	39	42



Tear Out

**BL8802 Bella+Canvas Ladies Flowy Side Slit Tank Top**  
65% polyester/35% viscose.  
Relaxed shape. Scoop neckline. Side seams.  
Curved hem with side slits. Tear out label.

Weight: 125 gsm

<b>Size:</b>	S	M	L	XL
<b>Ladies size:</b>	6/8	10/12	14/16	18/20
<b>Chest (to fit):</b>	30/32	32/34	34/36	36/38



Tear Out

**NX5033 Next Level Ladies Festival Tank Top**

65% polyester/35% ringspun combed cotton.  
Relaxed fit. Scoop neckline.  
Side seams. Twin needle stitching.  
Curved hem with side slits.  
Tear out label.

Weight: 120 gsm

<b>Size:</b>	XS	S	M	L	XL	XXL
<b>Chest (to fit):</b>	30	32	34	36	39	42



Tear Out



**BL8802**  
**BELLA+CANVAS**



**NX5033**



JustHoods<sup>®</sup> AWDs JustCool<sup>®</sup> AWDs JustPolos<sup>®</sup> AWDs JustTs<sup>®</sup> AWDs AWD is A ACADEMY AFD ANTHEM<sup>®</sup>

BABYBUGZ BagBase Beechfield ORIGINAL HEADWEAR BELLA+CANVAS BROOK TAVERNER canterbury

Comfort Grip CRAGHOPPERS DARE 2B DENNY'S LONDON ecologie. FINDEN+HALES

FLIGHT<sup>®</sup> of rupoons FRONTROW & CO HERITAGE CLOTHING FRUIT&LOOM. GAMEGEAR. GILDAN<sup>®</sup> GLENMUIR 1897

HENBURY JOSEPH ALAN KARIBAN KARIBAN Vintage ki-mood kup KUSTOM KIT

larkwood<sup>®</sup> leChef PROFESSIONAL mantis one by mantis Mumbles<sup>®</sup> NEO BLU PEOPLE IN MOTION NL NEXT LEVEL APPAREL

ORIGINAL FNB FORTIX FORTIX PORTWEST PREMIER<sup>®</sup> PROACT. QUADRA

REGATTA PROFESSIONAL REGATTA PROFESSIONAL REGATTA PROFESSIONAL REGATTA PROFESSIONAL REGATTA PROFESSIONAL REGATTA PROFESSIONAL REGATTA PROFESSIONAL REGATTA PROFESSIONAL

Result SAFE GUARD WORK GUARD Result HEADWEAR Result GENUINE RECYCLED core urban winter

RTP<sup>®</sup> APPAREL RUSSELL RUSSELL COLLECTION RUSSELL SCHOOLGEAR SF SF SOL'S the fair spirit

So DENIM SPIRO BIKEWEAR SPIRO splashmacs SUNDERLAND OF SCOTLAND STORMTECH

SUPERSTAR by mantis TEE JAYS TOWEL CITY WARRIOR Westford Mill YOKO PILVIS