



V
VAQUITA
APPAREL

2022

THE COLLECTION

2022

THE COLLECTION

- Largest ever sustainable & organic range
- Corporate, workwear & uniform solutions
- Fashion & retail-ready styles
- Promotional & merchandising options
- Sports & teamwear
- Varsity, schoolwear, accessories & more...

We're happy to say that this year we have printed our brochures using FSC® certified paper.



Contents

Accessories & More

1 - 26



RS144



RS144 Result Winter Essentials Polartherm™ Gloves
100% polyester.
Pill resistant. Elasticated cuffs.

Size: S M L



Beechfield
ORIGINAL HEADWEAR

BB295

BB295 Beechfield Suprafleece® Thinsulate™ Gloves
100% polyester anti-pill Suprafleece®.
100% polyester lining. Thinsulate™ layer.
Ultra thermal fabric - warmth without weight. Elasticated cuffs.

Size: S/M L/XL



BB497



Beechfield
ORIGINAL HEADWEAR

BB497 Beechfield Cable Knit Melange Gloves
100% soft touch acrylic.
Heavyweight melange cable knit. Hand knitted feel. Ribbed cuffs. Tear out label.

Size: S/M L/XL



Tear Out



RS147

RS147 Result Winter Essentials Classic Lined Thinsulate™ Gloves
100% acrylic.
Thinsulate™ insulation. Soft feel polyester tricot lining. Branding on cuffs. Tag free.

Size: S/M L/XL XXL



No Label

Thinsulate INSULATION



BB490



Beechfield
ORIGINAL HEADWEAR

BB490 Beechfield Touchscreen Smart Gloves
95% acrylic/4% polyester/1% elastane.*
Compatible with touch screen devices.
Selected conductive fingers and thumb.

Size: S/M L/XL



*Heathers 57% acrylic/42% polyester/1% elastane.



RS147B

RS147B Result Winter Essentials Kids Lined Thinsulate™ Gloves
100% acrylic.
Thinsulate™ insulation. Soft feel polyester tricot lining. Branding on cuffs.

Size: One size



Thinsulate INSULATION



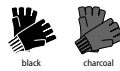
BB491



Beechfield
ORIGINAL HEADWEAR

BB491 Beechfield Fingerless Gloves
Black 88% acrylic/11% polyester/1% elastane. Charcoal 50% polyester/49% acrylic/1% elastane. One piece knit. Ribbed cuffs.

Size: S/M L/XL



RS364

RS364 Result Winter Essentials Soft Shell Thermal Gloves
Three layer bonded fabric.
Polyester outer. TPU waterproof, breathable and windproof membrane mid layer. Pill resistant micro fleece inner. Comfort stretch. Elasticated wrist with extended wrist cover. Palm grip feature. Cut out label.

Size: S/M L/XL



RS134



TECH
PERFORMANCE

RS134 Result Winter Essentials TECH Performance Sport Gloves
Three layer soft shell fabric with two way stretch.
Breathable, windproof and water resistant.
Comfort sport fit with extended wrist cover.
Palm grips. Individually boxed. Access for decoration. Branding on back of glove.

Size: S M L
Palm (cm): 11.5 12 12.5



DARE 2B

DA252 Dare 2b Hand In Waterproof Insulated Gloves
100% polyester.
Warm scrim Thinsulate™ lining.
High warmth padding. ARED 20/20 technology. Waterproof with taped seams. Breathable. Synthetic nubuck thumb. Textured palm and thumb grip. Elasticated wrist with adjustable cuffs. Adjustable drawcord lower wrist. Secure clip attachment.

Size: S/M L/XL



DA252 [DPG001]



002 NECK WARMERS

SR267



SR267 Spiro Elite Running Gloves
100% polyester.
Windproof and lightweight.
Sweat panel, Media digits. Reflective piping. Elasticated cuffs. Branded.

Size: S M L



black

BB310



Beechfield ORIGINAL HEADWEAR

BB310 Beechfield Sports Tech Soft Shell Gloves
93% polyester/7% elastane.
Windproof and breathable.
Lightweight. Quick drying. Ergonomic fit. Compatible with touch screen devices. Removable adhesive fabric label.

Size: S/M L/XL



black

graphite grey

fluorescent yellow



Sticker

BB320



Beechfield ORIGINAL HEADWEAR

BB320 Beechfield Sports Tech Soft Shell Neck Warmer
85% polyester/15% elastane.
Windproof and breathable.
Lightweight and quick drying.
Ergonomic fit with contoured design. Adjustable drawcord with toggle. Flatlock stitched seams. Tear out label.

Size: One size



black

graphite grey

fluorescent yellow

Tear Out

BB320B



Beechfield ORIGINAL HEADWEAR

BB320B Beechfield Kids Sports Tech Soft Shell Neck Warmer
85% polyester/15% elastane.
Windproof and breathable.
Lightweight and quick drying.
Ergonomic fit with contoured design. Adjustable drawcord with toggle. Flatlock stitched seams. Tear out label.

Size: One size



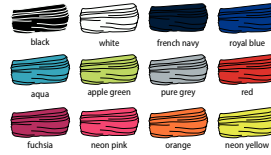
black

Tear Out

SOL'S
the fair spirit

03094 SOL'S Bolt Neck Warmer
100% polyester.
Seam free for comfort.
Multi-purpose use.
Suitable for sublimation printing.

Dimensions: 50 x 25 cm



black

white

french navy

royal blue

aqua

apple green

pure grey

red

fuchsia

neon pink

orange

neon yellow



Beechfield ORIGINAL HEADWEAR

BB905 Beechfield Morf® Ombré
100% polyester microfibre.
Breathable fabric.
Seam free for comfort.
Machine washable/non iron.
Multi-purpose use.

Dimensions: 50 x 25 cm



caribbean blues

tropical greens

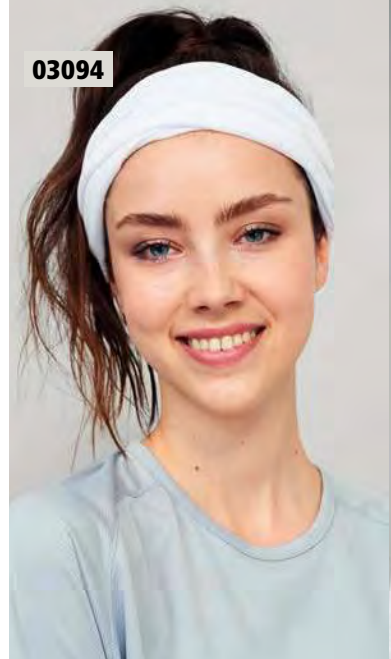
storm greys

sunset reds

candyfloss pinks

Morf

03094



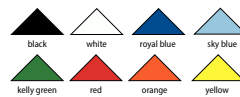
BB905



SOL'S
the fair spirit

01198 SOL'S Bandana
90% polyester/10% cotton.

Dimensions: 62 x 62 x 86 cm



black

white

royal blue

sky blue

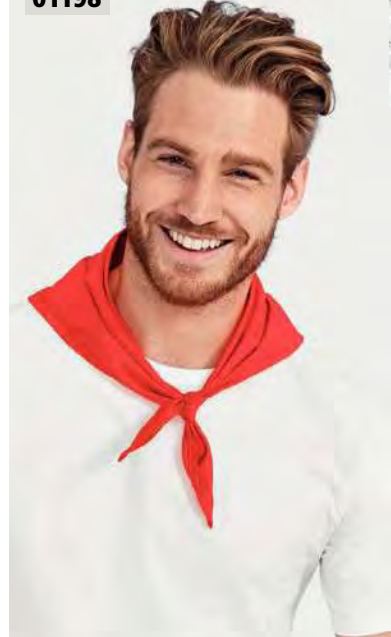
kelly green

red

orange

yellow

01198



BB900



Beechfield
ORIGINAL HEADWEAR

BB900 Beechfield Morf® Original

100% polyester microfibre.
Breathable fabric. Seam free for comfort.
Machine washable/non iron.
Multi-purpose use.

Dimensions: 50 x 25 cm



Morf

BB901

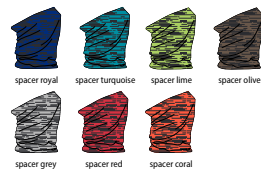


Beechfield
ORIGINAL HEADWEAR

BB901 Beechfield Morf® Spacer Marl

100% polyester microfibre.
Printed spacer effect.
Breathable fabric.
Seam free for comfort.
Machine washable/non iron.
Multi-purpose use.

Dimensions: 50 x 25 cm



Morf

BB904

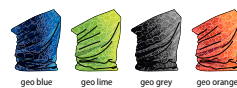


Beechfield
ORIGINAL HEADWEAR

BB904 Beechfield Morf® Geometric

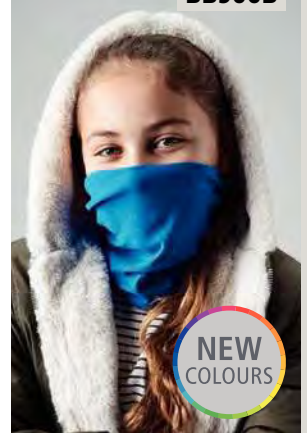
100% polyester microfibre.
Breathable fabric.
Seam free for comfort.
Machine washable/non iron.
Multi-purpose use.

Dimensions: 50 x 25 cm



Morf

BB900B

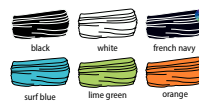


Beechfield
ORIGINAL HEADWEAR

BB900B Beechfield Junior Morf® Original

100% polyester microfibre.
Breathable fabric. Seam free for comfort.
Machine washable/non iron.
Multi-purpose use.

Dimensions: 44 x 22 cm



Morf

NEW COLOURS

BB910



Beechfield
ORIGINAL HEADWEAR Morf

BB910 Beechfield Premium Anti-Bacterial Morf®

100% polyester microfibre.
Treated with antimicrobial technology.
Breathable fabric. Premium hygiene and freshness protection. Seam free for comfort.
Machine washable/non-iron. Multi-purpose use. Each pack contains 3 Morf®.

Dimensions: 50 x 25 cm



BB910B



Beechfield
ORIGINAL HEADWEAR Morf

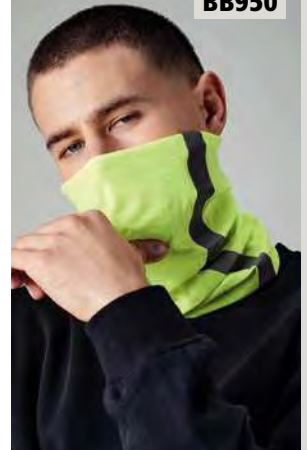
BB910B Beechfield Junior Premium Anti-Bacterial Morf®

100% polyester microfibre.
Treated with antimicrobial technology.
Breathable fabric. Premium hygiene and freshness protection. Seam free for comfort.
Machine washable/non-iron. Multi-purpose use. Each pack contains 3 Morf®.

Dimensions: 44 x 22 cm



BB950



Beechfield
ORIGINAL HEADWEAR

BB950 Beechfield Morf® Enhanced-Viz

100% polyester microfibre.
Breathable fabric. Seam free for comfort.
Reflective stripes. Machine washable/non iron. Multi-purpose use.

Dimensions: 50 x 25 cm



Morf



BB916

Beechfield
ORIGINAL HEADWEAR

BB916 Beechfield
Morf® Merino

100% merino wool.
Jersey feel fabric.
Breathable, wicking fabric.
Quick drying.
Naturally anti-bacterial and odour resistant. Flat seams for comfort.
Hand wash only.
Multi-purpose use.

Dimensions: 50 x 25 cm



NEW

Beechfield
ORIGINAL HEADWEAR

BB499 Beechfield
Cable Knit Melange Scarf

100% soft touch acrylic.
Heavyweight melange cable knit.
Hand knitted feel.
Chunky, wrap-around design.
Removable adhesive fabric label.

Dimensions: 168 x 27 cm



BB499



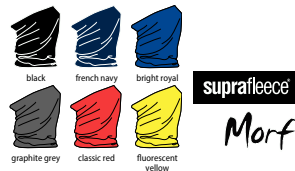
BB920

Beechfield
ORIGINAL HEADWEAR

BB920 Beechfield
Morf® Suprafleece®

100% polyester microfibre.
Polyester Suprafleece® for extra warmth.
Breathable fabric. Machine washable/non iron. Multi-purpose use.

Dimensions: 74 x 25 cm

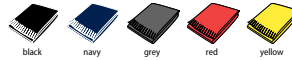


RS143 Result Winter Essentials

Polartherm™ Tassel Scarf

100% polyester fleece.
Pill resistant.
Tassel trim.

Dimensions: 155 x 25 cm



RS143



BB930

Beechfield
ORIGINAL HEADWEAR

BB930 Beechfield
Morf® Micro Fleece

100% polyester micro fleece.
Ultra thermal fabric - warmth without weight. Breathable fabric.
Flat seams for comfort.
Machine washable/non iron.
Multi-purpose use.

Dimensions: 50 x 25 cm

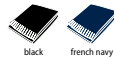


Beechfield
ORIGINAL HEADWEAR

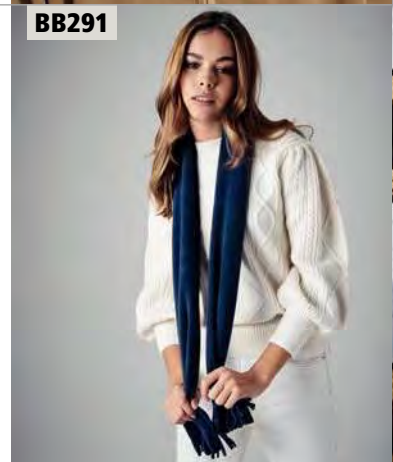
BB291 Beechfield
Suprafleece® Dolomite Scarf

100% polyester anti-pill Suprafleece®.
Ultra thermal fabric - warmth without weight. Contemporary tassel design.

Dimensions: 150 x 25 cm



suprafleece



BB291



RC353



RC353 Result Winter Essentials
Bandit® Face/Neck/Chest Warmer

100% acrylic outer.
Polyester microfibre lining. Tear release closure. Can be worn up to 5 different styles. Cut out label.

Size: S/M L/XL
Dimensions: 56 x 24 cm 62 x 28 cm



Beechfield
ORIGINAL HEADWEAR

BB290 Beechfield
Suprafleece® Geneva Scarf

100% polyester anti-pill Suprafleece®.
Ultra thermal fabric - warmth without weight.

Dimensions: 150 x 25 cm



suprafleece



BB290



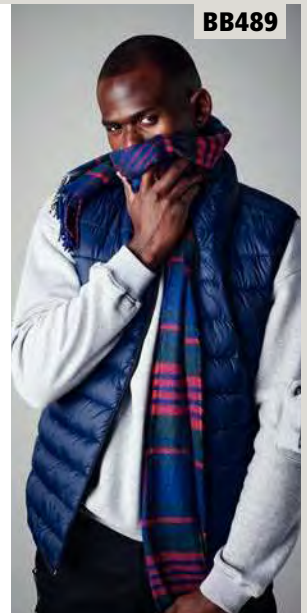
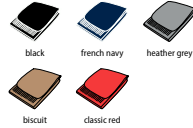
BB500

Beechfield
ORIGINAL HEADWEAR

BB500 Beechfield Classic Woven Scarf

100% acrylic.
Luxury soft touch yarn. Oversized design.
Unisex. Tassel trim.
Removable adhesive fabric label.

Dimensions: 186 x 47 cm



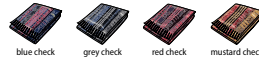
BB489

Beechfield
ORIGINAL HEADWEAR

BB489 Beechfield Classic Check Scarf

100% soft touch acrylic.
Woven check pattern. Tassel trim.
Removable adhesive fabric label.

Dimensions: 181 x 31 cm



BB470

Beechfield
ORIGINAL HEADWEAR

BB470 Beechfield Classic Knitted Scarf

100% soft touch acrylic.*
Luxurious double layer knit. Classic styling.
Tassel trim. Tear out label.

Dimensions: 152 x 18 cm

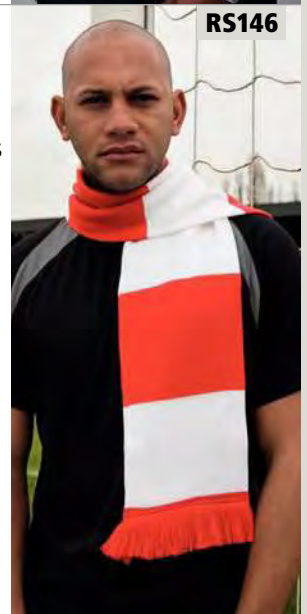
*Heather grey 55% polyester/45% acrylic.



RS146 Result Winter Essentials Team Scarf

100% acrylic.
6cm tassels on each end. Tag free.

Dimensions: 140 x 20 cm



RS146



RS145



RS145 Result Winter Essentials Classic Heavy Knit Scarf

100% acrylic.
Double knit.
Tag free.

Dimensions: 165 x 20 cm



Beechfield
ORIGINAL HEADWEAR

BB479 Beechfield Stadium Scarf

100% soft touch acrylic.
Luxurious double layer knit.
Classic colour combinations. Tassel trim.

Dimensions: 182 x 18 cm



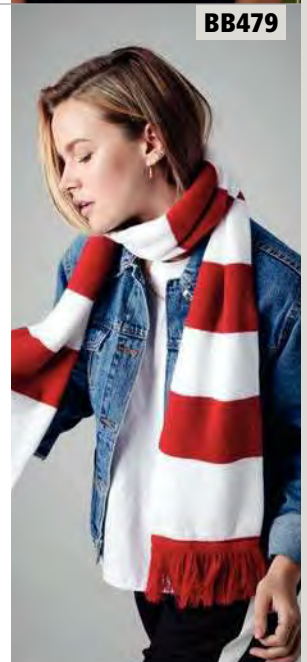
BB469

Beechfield
ORIGINAL HEADWEAR

BB469 Beechfield Metro Knitted Scarf

100% soft touch acrylic.
Snug ribbed knit.

Dimensions: 170 x 20 cm



BB479

Remove all hang tags and their fasteners before giving these items to a child.
Complies with EN71 European Toy Safety regulations.

MM01



**MM01 Mumbles
Bracken Bear**
Light brown coloured bear with blue tartan ribbon.
Contrast pads on paws and feet.

Size:	S	M	L
Height (cm):	20.5	30.5	40.5

Suitable for ages 0+.



MM30



**MM30 Mumbles
Bear in a T-Shirt**
Plush cream and mid brown coloured bear.
Comes dressed in a removable white 100% cotton t-shirt.

Size:	S	M
Height (cm):	20	30

Suitable for ages 0+.



MM16



**MM16 Mumbles
Classic Bear**
Light brown coloured bear with jointed arms and legs. Dark brown stitched nose.
Contrast pads on paws and feet.

Size:	S	M
Height (cm):	20.5	30.5

Suitable for ages 0+.



MM03



**MM03 Mumbles
Brumble Bear**
Light brown coloured plush bear.
Colour matching ribbon, nose and mouth detail.
Bear filled bottom and feet.

Size:	S	M
Height (cm):	22	33

Suitable for ages 0+.



MM32



**MM32 Mumbles
Velvet Bear**
Velvet bear with contrast nose.
Brown ribbon with cream spots.

Size:	S	M	L
Height (cm):	20	30	40

Suitable for ages 0+.



MM33



**MM33 Mumbles
Reindeer**
Brown coloured reindeer with red nose and contrast antlers.

Size:	M
Height (cm):	30

Suitable for ages 0+.



MM21



**MM21 Mumbles
Honey Bear**
Honey coloured chubby soft plush bear.
Contrast nose and feet detail. Comes dressed in a removable cream velour t-shirt.

Size:	M	L
Height (cm):	28	38

Suitable for ages 0+.



MM18



**MM18 Mumbles
Rabbit**
Cream coloured rabbit with self coloured ears and pads on feet.
Ribbon around neck.

Size:	M
Height (cm):	36

Suitable for ages 0+.



MM23



**MM23 Mumbles
Binx Bear**
Two options.
Key ring - light brown coloured small bear with key ring attachment.
Magnet - light brown coloured small bear with magnets in 4 paws.
Both come wearing a removable white cotton t-shirt.

Size:	XS
Magnet height (cm):	13
Key ring height (cm):	10

Not suitable for children under the age of 36 months due to choking hazard on small parts.





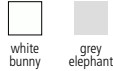
MM751

**MM751 Mumbles****Animal Blanket**

Soft plush double layer blanket. White bunny has white blanket. Grey elephant has grey blanket. Zip access for decoration. Suitable for embroidery, print and sublimation.

Dimensions:	77 x 77 cm
--------------------	------------

Suitable for ages 0+.



NEW

MM20

**MM20 Mumbles**

Baby monkey comforter. Double layer blanket. Concealed zip for embroidery access.

Size:	M
Height (cm):	33
Width (cm):	33

Suitable for ages 0+.



MM34

**MM34 Mumbles**

Rabbit and Blanket Set. Light brown coloured soft plush rabbit. Contrast cream corduroy under ears and on paws. Hook and loop fastening on paws. Separate cream fleece blanket with contrast blanket stitched edge (90 x 75cm). Comes in a presentation bag with cream ribbon.

Size:	M
Height (cm):	40

Suitable for ages 0+.



MM606

**MM606 Mumbles**

Hippo with Printed Fleece Blanket. Soft plush hippo with printed fleece blanket (87 x 73cm). Contrast ears, nose and feet. Sewn eyes. Hook and loop fastening on feet.

Height (cm):	30
---------------------	----

Suitable for ages 0+.

**MM700 Mumbles****Animal Comforter with Rattle**

Soft plush white rabbit and bear with contrast nose and inner ear. Rabbit has pink contrast blanket. Bear has blue contrast blanket. Concealed zip on blanket for decoration.

Dimensions:	28 x 28 cm
--------------------	------------

Suitable for ages 0+.



MM701

**MM701 Mumbles**

Comforter with Rattle. Soft plush baby elephant. Yellow contrast inner ears. Soft plush blanket with contrast panels. Contrast interactive tags on blanket edges. Zip access on blanket for decoration.

Dimensions:	31 x 31 cm
--------------------	------------

Suitable for ages 0+.



MM19

**MM19 Mumbles**

Lamb Comforter. Double layer blanket. Lamb features with head and arms. Concealed zip for embroidery access.

Size:	M
Height (cm):	26
Width (cm):	26

Suitable for ages 0+.



MM600

**MM600 Mumbles**

Zippie Lamb Cushion. Cream coloured soft plush lamb cushion. Hook and loop tab fastening. Zip access for decoration onto front panel. Removable inner cushion. Suitable for embroidery, print and sublimation.

Dimensions:	47 x 30 cm
--------------------	------------

Suitable for ages 0+.



MM601

**MM601 Mumbles**

Zippie Bear Cushion. Mid brown coloured soft plush bear cushion. Hook and loop tab fastening. Zip access for decoration onto front panel. Removable inner cushion. Suitable for embroidery, print and sublimation.

Dimensions:	47 x 30 cm
--------------------	------------

Suitable for ages 0+.



Remove all hang tags and their fasteners before giving these items to a child.
Complies with EN71 European Toy Safety regulations.

MM60



NEW COLOURS

MM60 Mumbles Printme Mini Animals

Soft plush mini animal toys - grey bunny, white bunny, lion, giraffe, unicorn, owl, cat, elephant, penguin, rainbow bear, reindeer, light brown teddy, white teddy, pink teddy, blue teddy, highland cow, koala, kangaroo, lamb and sloth. Height ranges from 23cm up to 34cm. Suitable for vinyl print and sublimation.

Height: Between 23 - 34 cm

Suitable for ages 0+.



MM50



MM50 Mumbles

Zippie Bunny
Soft plush bunny. Floppy ears. Sewn eyes. Contrast pink nose. White coloured panel on tummy and feet. Removable inner pad. Zip access for decoration onto front panel. Suitable for embroidery, print and sublimation.

Height (cm): 45

Suitable for ages 0+.



MM51



MM51 Mumbles

Zippie Teddy
Mid brown coloured soft plush bear. Sewn eyes. Contrast brown nose. Light brown coloured panel on tummy and feet. Removable inner stuffing. Zip access for decoration onto front panel. Suitable for embroidery, print and sublimation.

Height (cm): 45

Suitable for ages 0+.



MM561



MM561 Mumbles

Zippie Angel
White coloured soft plush bear. Contrast eyes and nose. Fabric wings. Removable inner pad. Zip access for decoration onto front panel. Suitable for embroidery, print and sublimation.

Height (cm): 42

Suitable for ages 0+.



MM550



MM550 Mumbles

Zippie Giant Bunny
Grey coloured soft plush bunny. Floppy ears. Sewn eyes and nose. White panels under ears, on tummy and feet. Removable inner pad. Zip access for decoration onto front panel. Suitable for embroidery, print and sublimation.

Height (cm): 65

Suitable for ages 0+.



MM556



Sedex

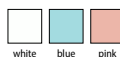


MM556 Mumbles

Zippie New Baby Bear
Coloured soft plush bear. White coloured panel on ears, nose, tummy and feet. Self colour ribbon. Removable inner pad. Zip access for decoration onto front panel. Suitable for embroidery, print and sublimation.

Height (cm): 40

Suitable for ages 0+.



MM24



MM24 Mumbles

Supersize Honey Bear
Honey coloured chubby soft plush bear. Contrast nose and feet detail. Comes dressed in a cream velour t-shirt.

Size: 3XL

Height (cm): 86

Suitable for ages 0+.



MM555 Mumbles

Zippie Rainbow Bear
Multi coloured soft plush bear. White coloured panel on ears, nose, tummy and feet. Removable inner pad. Zip access for decoration onto front panel. Suitable for embroidery, print and sublimation.

Height (cm): 42

Suitable for ages 0+.



MM576



NEW

**MM576 Mumbles****Zippie Lamb**

Soft plush cream coloured lamb. Contrast face, hands and feet. Sewn eyes and mouth. White coloured panel on tummy. Removable inner pad. Zip access for decoration onto front panel. Suitable for embroidery, print and sublimation.

Height (cm):	42
--------------	----

Suitable for ages 0+.



MM570

**MM570 Mumbles****Pink Zippie Unicorn**

Pink coloured soft plush unicorn. Pink contrast horn and feet. White contrast mane and tail. Sewn eyes. Removable inner pad. Zip access for decoration onto front panel. Suitable for embroidery, print and sublimation.

Height (cm):	38
--------------	----

Suitable for ages 0+.



MM54

**MM54 Mumbles****Zippie Owl**

Light brown coloured soft plush owl. Contrast nose and feet. White coloured panel on tummy and under wings. Removable inner pad. Zip access for decoration onto front panel. Suitable for embroidery, print and sublimation.

Height (cm):	40
--------------	----

Suitable for ages 0+.



MM52

**MM52 Mumbles****Zippie Dog**

Mid brown coloured soft plush dog. Floppy ears. Sewn eyes. Contrast brown nose. Light brown coloured panel on tummy and feet. Removable inner stuffing. Zip access for decoration onto front panel. Suitable for embroidery, print and sublimation.

Height (cm):	45
--------------	----

Suitable for ages 0+.



MM574



NEW

MM574 Mumbles**Zippie Koala Bear**

Soft plush grey koala bear. Sewn eyes. Contrast nose. White coloured panel on tummy and feet. Removable inner pad. Zip access for decoration onto front panel. Suitable for embroidery, print and sublimation.

Height (cm):	43
--------------	----

Suitable for ages 0+.



MM565

MM565 Mumbles**Zippie Highland Cow**

Brown coloured soft plush highland cow. Contrast horns and tummy. Sewn eyes. Removable inner pad. Zip access for decoration onto front panel. Suitable for embroidery, print and sublimation.

Size:	L
Height (cm):	37

Suitable for ages 0+.



MM568

MM568 Mumbles**Zippie Fox**

Brown coloured soft plush fox. White inner ears, snout and tummy. Sewn eyes. Removable inner pad. Zip access for decoration onto front panel. Suitable for embroidery, print and sublimation.

Size:	L
Height (cm):	40

Suitable for ages 0+.



MM571

MM571 Mumbles**Zippie Turtle**

Green coloured soft plush turtle. Contrast eye detail. Removable inner pad. Zip access for decoration onto top and bottom panels. Suitable for embroidery, print and sublimation.

Size:	L
Height (cm):	42

Suitable for ages 0+.



MM572

MM572 Mumbles**Zippie Sloth**

Soft plush brown coloured sloth. Contrast face, hands and feet. Sewn eyes and mouth. Tear release fastening on hands. White coloured panel on tummy. Removable inner pad. Zip access for decoration onto front panel. Suitable for embroidery, print and sublimation.

Height (cm):	42
--------------	----

Suitable for ages 0+.



NEW

Remove all hang tags and their fasteners before giving these items to a child.
Complies with EN71 European Toy Safety regulations.

MM564



Sedex Zippies



MM564 Mumbles Zippie Giraffe
Soft plush giraffe. Contrast mane, horns, inner ears, nose, hooves and tail. Sewn eyes and mouth. Removable inner pad. Zip access for decoration onto front panel. Suitable for embroidery, print and sublimation.

Height (cm): 38

Suitable for ages 0+.

MM575



MM575 Mumbles Zippie Kangaroo
Soft plush mid brown kangaroo. Sewn eyes. Contrast nose. Removable inner pad. Zip access for decoration onto front panel. Suitable for embroidery, print and sublimation.

Height (cm): 38

Suitable for ages 0+.



MM558



Sedex Zippies



MM558 Mumbles Zippie Elephant
Grey coloured soft plush elephant. Cream coloured inner ears, tummy and feet. Sewn eyes. Removable inner pad. Zip access for decoration onto both ears and front panel. Suitable for embroidery, print and sublimation.

Height (cm): 46

Suitable for ages 0+.

MM563



MM563 Mumbles Zippie Father Christmas
Soft plush father christmas. Sewn eyes. Contrast belt and feet. White coloured panel on tummy. Removable inner pad. Zip access for decoration onto front panel. Suitable for embroidery, print and sublimation.

Height (cm): 33

Suitable for ages 0+.

MM569



Sedex Zippies



MM569 Mumbles Zippie Lion
Soft plush lion. Contrast mane, nose and tail. Sewn eyes and mouth. Removable inner pad. Zip access for decoration onto front panel. Suitable for embroidery, print and sublimation.

Height (cm): 42

Suitable for ages 0+.

Height (cm): 33

Suitable for ages 0+.



MM566



MM566 Mumbles Zippie Penguin
Soft plush penguin with contrast knitted scarf. Contrast beak and feet. Sewn eyes. White coloured panel on tummy. Removable inner pad. Zip access for decoration onto front panel. Suitable for embroidery, print and sublimation.

Height (cm): 38

Suitable for ages 0+.



MM53



Sedex Zippies



MM53 Mumbles Zippie Dinosaur
Green coloured soft plush dinosaur. Sewn eyes. Contrast felt decoration. Light green coloured panel on tummy and feet. Removable inner pad. Zip access for decoration onto front panel. Suitable for embroidery, print and sublimation.

Height (cm): 42

Suitable for ages 0+.



MM560 Mumbles Zippie Reindeer
Brown coloured soft plush reindeer. Red nose and contrast antlers. White coloured panel on ears, tummy and feet. Removable inner pad. Zip access for decoration onto front panel. Suitable for embroidery, print and sublimation.

Height (cm): 46

Suitable for ages 0+.



MM560



MM559



Sedex Zippies



MM559 Mumbles Zippie Dragon
Red coloured soft plush dragon. Contrast fabric on horns, wings and ears. Sewn eyes. Removable inner pad. Zip access for decoration onto front panel. Suitable for embroidery, print and sublimation.

Height (cm): 42

Suitable for ages 0+.

MM71



MM71 Mumbles Teddy T-Shirt

100% cotton plain t-shirt.* Bear not included. Suitable for bears small, medium and large.

Size: S M** L*

Not suitable for children under the age of 36 months due to choking hazard on small parts.
*Sublimation white 100% polyester.
**Available in medium only.
*Not available in large.



MM83

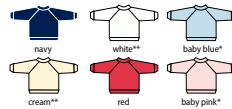


MM83 Mumbles Teddy Jumper

100% acrylic. Bear not included. Suitable for bears small, medium and large.

Size: S** M* L

Not suitable for children under the age of 36 months due to choking hazard on small parts.
*Available in medium only.
**Available in small.



MM573 Mumbles Christmas Zippie Bear

Soft plush white bear. Christmas hat over one ear. Sewn eyes. Red nose. Red knitted scarf. Removable inner pad. Zip access for decoration onto front panel. Suitable for embroidery, print and sublimation.

Size: L
Height (cm): 35

Suitable for ages 0+.



MM567



MM567 Mumbles Zippie Snowman

Soft plush snowman with contrast knitted scarf. Sewn eyes and mouth. Contrast orange nose. Contrast hat and gloves. White coloured panel on tummy. Removable inner pad. Zip access for decoration onto front panel. Suitable for embroidery, print and sublimation.

Height (cm): 44

Suitable for ages 0+.

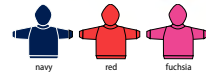


MM88 Mumbles Teddy Hoodie

100% cotton hooded t-shirt. Bear not included. Suitable for bears medium and large.

Size: M L

Not suitable for children under the age of 36 months due to choking hazard on small parts.



MM88



MM605 Mumbles Unicorn Hot Water Bottle Cover

Soft plush hot water bottle cover. Suitable for a 2 litre hot water bottle - water bottle not included. Contrast horn and feet. White mane. Sewn nose and eyes. White coloured panel on tummy. Tear release rear access. Suitable for embroidery, print and sublimation.

Height (cm): 43

Suitable for ages 0+.



MM605



MM607 Mumbles Giraffe Hot Water Bottle Cover

Soft plush hot water bottle cover. Suitable for a 2 litre hot water bottle - water bottle not included. Contrast mane, horns, inner ears, nose, hooves and tail. Sewn eyes and mouth. Tear release rear access. Suitable for embroidery, print and sublimation.

Height (cm): 42

Suitable for ages 0+.



MM607



MM603 Mumbles Zippie Dog Backpack

Soft plush dog backpack. Nylon webbing straps and handle. Sewn eyes. Zip access for decoration onto front panel. Suitable for embroidery, print and sublimation.

Height (cm): 38

Not suitable for children under the age of 10 months.



MM603



MM604 Mumbles Zippy Rabbit Backpack

Soft plush pink bunny backpack. Nylon webbing straps and handle. Sewn eyes. Zip access for decoration onto front panel. Suitable for embroidery, print and sublimation.

Height (cm): 38

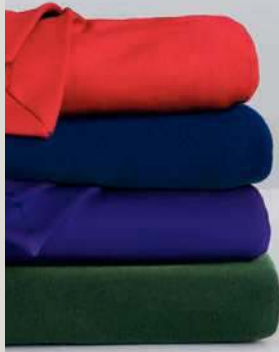
Not suitable for children under the age of 10 months.



MM604

012 BLANKETS & BELTS

GD100 [12900]



GILDAN
DryBlend®

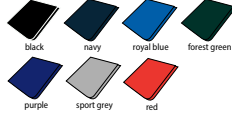


GD100 Gildan Stadium Blanket

50% cotton/50% Dryblend polyester. Moisture wicking properties. Air jet spun yarn for softer feel and anti-pill. Mitred V corners. Hemmed sides all around. Twin needle stitching.

Weight: 305 gsm

Dimensions: 127 x 152 cm



RS39



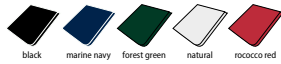
RS39 Result Winter Essentials Polartherm™ Blanket

100% polyester. Pill resistant. Quick drying. Chunky natural contrast stitched edging. Machine washable. Cut out label.

Weight: 300 gsm



Dimensions: 175 x 140 cm



88105



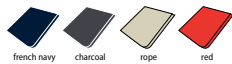
SOL'S
the fair spirit

88105 SOL'S Plaid Fleece Blanket

100% polyester. Pill resistant. Carry handle.

Weight: 220 gsm

Dimensions: 150 x 120 cm



LW900T



larkwood
Baby and Toddler Collection

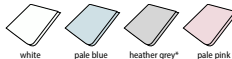
LW900T Larkwood Blanket

100% cotton.* Single jersey. Double layer blanket with bound edge. Tag free.

Weight: 160 gsm

Dimensions: 74 x 74 cm

*Heather grey 90% cotton/10% viscose.



k-up

KP807 K-UP

Classic Leather Belt

100% Italian full grain leather. 30mm thick. Total length 125cm - can be adjusted by trimming length as the buckle is detachable. Metal buckle. Comes in cotton bag with drawcord.

Size: One size



KP807



k-up

KP805 K-UP

Braided Elasticated Belt

52% rubber/48% polypropylene. Woven and braided for improved air circulation. Loops finished in polyurethane with contrast topstitching. Length 110cm. Width 3cm. Supplied in cotton pouch.

Size: One size



KP805



k-up

KP802 K-UP

Polyester Belt

100% polyester. Self colour metal buckle. Adjustable length.

Size: One size



KP802



BG744

BagBase®

BG744 BagBase Boutique Key Clip

100% leather-look PU. Saffiano fine grain. High shine metal clip. Can be used as a keyring or a bag charm. Designed for decoration.

Dimensions: 3.5 x 9 cm
Print area: 2 x 5.5 cm



Beechfield®
ORIGINAL HEADWEAR

BB400

BB400 Beechfield

Faux Fur Pop Pom Key Ring

Removable faux fur pom pom. Webbing strap, designed for decoration. Designed to be popped and swapped. Compatible with interchangeable pop pom products.

Size: One size



BG746

BagBase®

BG746 BagBase Boutique Heart Key Clip

100% leather-look PU. Saffiano fine grain. High shine metal clip. Can be used as a keyring or a bag charm. Designed for decoration.

Dimensions: 7 x 6 cm
Print area: 4 x 3 cm



BagBase®

BG100

BG100 BagBase Brandable Key Clip

100% polyester webbing. High density webbing. Durable clasp closure. Designed for decoration.

Dimensions: 20.5 x 2.5 cm
Print area: 12.5 x 1.5 cm



BG745

BagBase®

BG745 BagBase Boutique Circular Key Clip

100% leather-look PU. Saffiano fine grain. High shine metal clip. Can be used as a keyring or a bag charm. Designed for decoration.

Diameter: 7 cm
Print area: 4.5 x 4 cm



QUADRA®

QD440

QD440 Quadra Water Bottle and Holder

600D polyester. 500ml BPA free soft water bottle included. Soft pull up drink nozzle with screw on cap. Ergonomic easy grip neck. Wide neck opening for easy filling and cleaning. Belt loop and carabiner clip. Capacity 0.5 litre.

Dimensions: 7.5 x 7.5 x 20 cm
Print area: 9 x 9 cm
Embroidery: 9 tubular hoop



BG765

BagBase®

BG765 BagBase Boutique Adjustable Bag Strap

100% polyester webbing. High density webbing. High shine gold metal trims. Designed for decoration. Compatible with BG758 and BG760.

Dimensions: 127 x 5 cm
Print area: 110 x 4 cm
Embroidery: 6 tubular hoop



Westford Mill®

W350

W350 Westford Mill Fairtrade Cotton Canvas Cushion Cover

100% washed cotton canvas. Fairtrade certified. Self colour concealed zip. Small is rectangular shape. Medium and large are square shape. Perfect for print and embroidery. Padding not included.

Weight: 305 gsm

Size:	S	M	L
Dimensions (cm):	30 x 50	40 x 40	50 x 50
Print area (cm):	26 x 45	36 x 36	45 x 45
Embroidery (tubular hoop):	18	18	18



KI2010



KI2010 Kimood Foldable Mini Umbrella

Polyester pongee fabric. Manual opening. Metal shaft with three folds. Fibreglass frame. Metal tips. Safety runner. Plastic handle. Wrist loop. Comes in protective umbrella sleeve.

Diameter: 98 cm



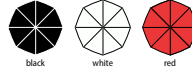
KI2024



KI2024 Kimood Transparent Umbrella

Polyolefin elastomer. Auto-opening. 8mm black metal shaft. Metal frame. Rounded polypropylene handle and rib tips.

Diameter: 84 cm



KI2007



KI2007 Kimood Golf Umbrella

210T polyester. Auto-opening. Black fibreglass frame. 10mm black metal shaft. Metal tips. Polycarbonate matt finish golf handle.

Diameter: 98 cm



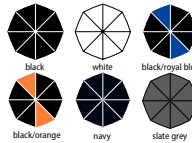
KI2004



KI2004 Kimood Storm Umbrella

210T polyester. Manual opening. 14mm fibreglass shaft and frame. EVA handle. PP rib tips.

Diameter: 128 cm



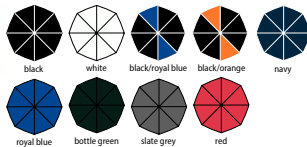
KI2008



KI2008 Kimood Large Golf Umbrella

210T polyester. Auto-opening. Black fibreglass frame. 14mm black metal shaft. Metal tips. Polycarbonate rubber finish golf handle.

Diameter: 120 cm



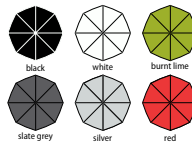
KI2021



KI2021 Kimood Large Automatic Umbrella

210T polyester. Auto-opening. 10mm black metal shaft. Fibreglass frame. Rubber/plastic handle.

Diameter: 105 cm



QD360

QUADRA

QD360 Quadra Pro Golf Umbrella

Polyester pongee fabric. Windproof frame and shaft. Ergonomic handle. Anti-lightning fibreglass frame.

Diameter: 130 cm



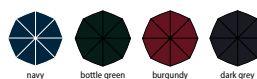
KI020



KI020 Kimood Auto Umbrella

Polyester pongee fabric. Classic 23" (58.5cm) wooden umbrella. Auto-opening. Black metal frame. Wooden shaft. Wooden J handle. Metal tips.

Diameter: 96 cm



SS301 [670126]



SS301 Fruit of the Loom Classic Briefs

100% cotton. Heatseal inner waistband label. Covered elasticated waistband. Branded label stitched onto waistband. Sold as pack of 3.

Weight: White 145 gsm, Cols 150 gsm

Size:	S	M	L
Waist (to fit):	30/32	33/35	36/38
Size:	XL	XXL	
Waist (to fit):	39/41	42/43	

SS302 [670187]



SS302 Fruit of the Loom Classic Sport Briefs

95% cotton/5% elastane. High cut leg. Heatseal inner waistband label. Tonal brand embossed waistband. Sold as pack of 2.

Weight: White 150 gsm, Cols 155 gsm

Size:	S	M	L
Waist (to fit):	30/32	33/35	36/38
Size:	XL	XXL	
Waist (to fit):	39/41	42/43	

SS304 [670267]



SS304 Fruit of the Loom Classic Boxers

95% cotton/5% elastane. Boxer style with longer leg length. Front fly keyhole opening. Heatseal inner waistband label. Tonal brand embossed waistband. Sold as pack of 2.

Weight: White 150 gsm, Cols 155 gsm

Size:	S	M	L
Waist (to fit):	30/32	33/35	36/38
Size:	XL	XXL	
Waist (to fit):	39/41	42/43	

KB800

KARIBAN

KB800 Kariban Boxers

95% cotton/5% elastane. Elasticated waistband with contrast piping.

Weight: 160 gsm

Size:	S	M	L
Waist (to fit):	30	32	34
Size:	XL	XXL	
Waist (to fit):	36	38	



SPIRO

SR293

SR293 Spiro 3 Pack Sports Sneaker Socks

97% polyester/3% elastane. Low cut style with ankle tab. Ribbed ankle cuff and instep. Cushioned soles. Contrast colour trim. Each pack contains three pairs.

Size:	S/M	L/XL
UK size (fits):	4/7	8/11
European size (fits):	37/41	42/46



SPIRO

SR295

SR295 Spiro 3 Pack Mixed Stripe Sneaker Socks

97% polyester/3% elastane. Coolmax® fabric. Anti-bacterial. Quick dry. Low cut style. Ribbed ankle cuff. Cushioned heel and toe. Branding across front foot. Each pack contains three pairs.

Size:	S/M	L/XL
UK size (fits):	4/7	8/11
European size (fits):	37/41	42/46



SPIRO

SR294

SR294 Spiro Technical Compression Sports Socks

96% nylon/4% elastane. Coolmax® fabric. Durable knit. Anti-bacterial. Quick dry. Anatomically shaped with reinforcement for optimum protection and compression. Ribbed ankle cuff. Cushioned heel and toe. Arch support.

Size:	S/M	L/XL	XXL*
UK size (fits):	4/7	8/11	12/14
European size (fits):	37/41	42/46	47/50



PROACT.®

PA033

PA033 Proact Microfibre Sneaker Socks

97% polyamide/3% elastane. Quick drying. Moisture management. Hard wearing with backing at heels and toes. Each pack contains three pairs.

Size:	S	M
Size (fits):	2-5	6-8



10604



SOL'S
the fair spirit

10604 SOL'S Soccer Socks

80% polyester/15% cotton/5% spandex. Knee length with ribbed opening. Branding on top of foot.

Size:	XS/S	S/M
Childrens size (fits):	12 - 2.5	3.5 - 6
Size:	M/L	
Adult size (fits):	6.5 - 10	



CRAGHOPPERS

CR650 Craghoppers Expert Trek Socks

38% Merino wool/38% polypropylene/22% polyamide/2% elastane. Double cuff. Elasticated over foot and ankle support. Cushioned sole, toe and heel. Branded.

Size (fits):	6-8	9-12
--------------	-----	------



CR650 [CEH001]



PA016



PROACT.

PA016 Proact Sports Socks

84% polyester/16% elastane. Knee length with ribbed opening. Engineered heel and toe. Cushioned for comfort.

Size:	S	M	L
Size (fits):	3-6	7-9	10-12



SS322 Fruit of the Loom 3 Pack Work Gear Socks

72% cotton/23% polyamide/4% polyester/1% elastane. Everyday use socks. Cushioned soles. Machine washable at 30°C. Each pack contains three pairs.

Size:	M	L
Size (fits):	6/8	9/12



SS322 [67608Z]



CN74



CN74 Canterbury Playing Cap Socks

100% polyamide. Knee high with rib opening. Contrast turnover. Hard wearing with a comfortable cushioned foot. Branding on back of leg.

Size:	XS	S	M
Size (fits):	11-1	2-5	6-10
Size:	L	XL	
Size (fits):	11-13	14-16	



REGATTA PROFESSIONAL

RG287 Regatta 3 Pack Workwear Socks

68% cotton/16% acrylic/14% polyester/2% elastane. Hardwearing loopstitch design. Ribbed ankle cuff. Flat toe seam. Cushioned heel and toe. Branded at side. Each pack contains three pairs.

Shoe size:	6-11
------------	------



RG287 [RMH003]



CN71



CN71 Canterbury Playing Socks

100% polyamide. Knee high with rib opening. Hard wearing with a comfortable cushioned foot. Branding on back of leg.

Size:	S	M	L	XL
Size (fits):	2-5	6-10	11-13	14-16



PORTWEST

PW131 Portwest Thermal Socks

55% cotton/15% nylon/15% wool/15% acrylic. Cushioning throughout provides extra warmth, extra impact resistance and extra comfort.

Size (fits):	6-9
--------------	-----



PW131 [SK11]





SK85



SF85



SK85 SF
Ladies Lounge Pants

96% cotton/4% elastane.
Single jersey. Elasticated waistband with drawcord.
Two side pockets. 1x1 ribbed cuffed leg ends. Tear out label.

Weight: 180 gsm

Size:	XS	S	M	L	XL	XXL
Ladies size:	8	10	12	14	16	18
Waist (to fit):	26	28	30	32	34	36



SF85 SF Men
Lounge Pants

96% cotton/4% elastane.
Single jersey.
Elasticated waistband with drawcord.
Two side pockets. Open hem. Tear out label.

Weight: 180 gsm

Size:	XS	S	M	L	XL	XXL
Waist (to fit):	30	32	34	36	38	40



LW85T Larkwood
Baby/Toddler Lounge Pants

96% cotton/4% elastane.
Single jersey. Elasticated waistband with mock drawcord.
1x1 ribbed cuffed leg ends. Tag free.

Weight: 180 gsm

Age:	0-6m	6-12m	12-18m	18-24m	24-36m	3-4y
Height (cm):	60/68	68/80	80/86	86/92	92/98	98/104



SM85 SF Minni
Kids Lounge Pants

96% cotton/4% elastane.
Single jersey. Elasticated waistband with mock drawcord.
1x1 ribbed cuffed leg ends. Tear out label.

Weight: 180 gsm

Age:	5-6	7-8	9-10	11-12	13
Height (cm):	116	128	140	152	164
Waist (to fit):	22	23	24.5	26	27.5



LW85T

larkwood
Baby and Toddler Collection



SM85



018 PYJAMAS & LOUNGEWEAR



SK83

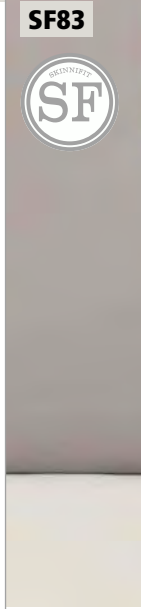


SK83 SF
Ladies Tartan Lounge Pants

100% cotton flannel.
Twill weave. Woven tartan trousers.
Fully elasticated waistband with mock drawcord. Plain hem. Tear out label.

Weight: 115 gsm

Size:	XXS	XS	S
Ladies size:	6	8	10
Waist (to fit):	24	26	28
Size:	M	L	XL
Ladies size:	12	14	16
Waist (to fit):	30	32	34



SF83



SF83 SF Men
Tartan Lounge Pants

100% cotton flannel.
Twill weave. Woven tartan trousers.
Fully elasticated waistband with mock drawcord.
Rear patch pocket. Plain hem. Tear out label.

Weight: 115 gsm

Size:	XS	S	M
Waist (to fit):	30	32	34
Size:	L	XL	XXL
Waist (to fit):	36	38	40



SK82



SK82 SF
Ladies Tartan Frill Shorts

100% cotton flannel.
Twill weave.
Woven tartan shorts with frill hem.
Fully elasticated waistband with mock drawcord. Tear out label.

Weight: 115 gsm

Size:	XXS	XS	S
Ladies size:	6	8	10
Waist (to fit):	24	26	28
Size:	M	L	XL
Ladies size:	12	14	16
Waist (to fit):	30	32	34



SM83 SF Minni
Kids Tartan Lounge Pants

100% cotton flannel.
Twill weave. Woven tartan trousers.
Fully elasticated waistband with mock drawcord.
Twin needle hem. Tear out label.

Weight: 115 gsm

Age:	5-6	7-8	9-10	11-12	13
Height (cm):	116	128	140	152	164
Waist (to fit):	22	23	24.5	26	27.5



SF82

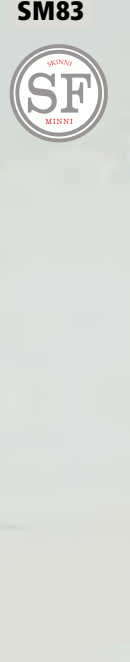
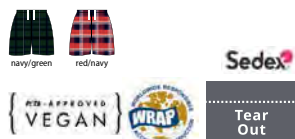


SF82 SF Men
Tartan Lounge Shorts

100% cotton flannel.
Twill weave. Woven tartan shorts.
Fully elasticated waistband with mock drawcord. Rear patch pocket.
Twin needle hem. Tear out label.

Weight: 115 gsm

Size:	XS	S	M
Waist (to fit):	30	32	34
Size:	L	XL	XXL
Waist (to fit):	36	38	40



SM83





SF74



**SF74 SF Men
Tartan Lounge Set**

100% cotton flannel.
Twill weave. Lounge shirt with notched collar. Pearlised button closure.
Left chest pocket with top stitch detail. Twin needle cuffs and hem.
Lounge pants with elasticated waistband.
Open leg ends. Tear out label.

Weight: 115 gsm

Size:	XS	S	M	L	XL	XXL
Chest (to fit):	34/36	36/38	38/40	42	44/46	48
Waist (to fit):	30	32	34	36	38	40



**LW83T Larkwood
Baby/Toddler Tartan Lounge Pants**

100% cotton flannel.
Twill weave.
Woven tartan trousers.
Fully elasticated waistband with mock drawcord.
Twin needle hem.

Weight: 115 gsm

Age:	0-6m	6-12m	12-18m	18-24m	24-36m	3-4y
Height (cm):	60/68	68/80	80/86	86/92	92/98	98/104



LW83T

larkwood
Baby and Toddler Collection



**SK74 SF
Ladies Tartan Lounge Set**

100% cotton flannel.
Twill weave. Lounge shirt with notched collar. Pearlised button closure.
Left chest pocket with top stitch detail.
Twin needle cuffs and hem. Lounge pants with elasticated waistband. Open leg ends.
Tear out label.

Weight: 115 gsm

Size:	XS	S	M
Chest (to fit):	30/32	32/34	34/36
Waist (to fit):	26	28	30
Size:	L	XL	XXL
Chest (to fit):	36/38	38/40	40/42
Waist (to fit):	32	34	36



SK74

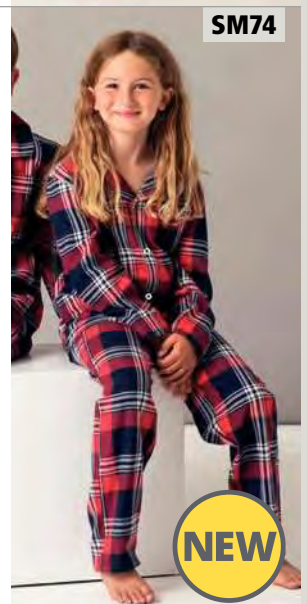


**SM74 SF Minni
Kids Tartan Lounge Set**

100% cotton flannel.
Twill weave. Lounge shirt with notched collar. Pearlised button closure. Left chest pocket with top stitch detail. Twin needle cuffs and hem. Lounge pants with elasticated waistband. Open leg ends.
Tear out label.

Weight: 115 gsm

Age:	3-4	5-6	7-8
Chest (to fit):	22	24	26
Waist (to fit):	21	22	23
Age:	9-10	11-12	13
Chest (to fit):	28	30.5	33
Waist (to fit):	24.5	26	27.5



SM74



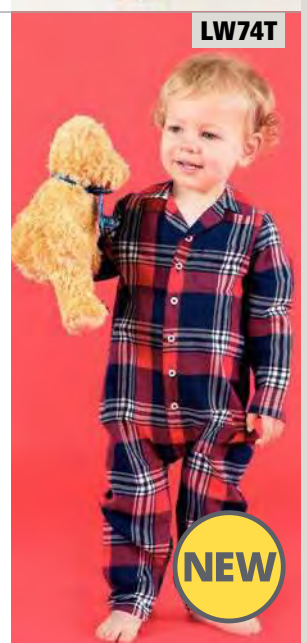
larkwood
Baby and Toddler Collection

**LW74T Larkwood
Baby/Toddler Tartan All In One**

100% cotton flannel.
Twill weave.
Front YKK popper closure.
Left chest pocket.
Internal YKK poppers around inseam.
Self fabric cuffs and leg ends.
Tag free.

Weight: 115 gsm

Age:	0-6m	6-12m	12-18m
Height (cm):	60/68	68/80	80/86
Age:	18-24m	24-36m	
Height (cm):	86/92	92/98	



LW74T



020 PYJAMAS & LOUNGEWEAR

TC53

TOWEL CITY



TC59 P764



TC53 Towel City Long PJ's in a Bag

100% cotton single jersey.*
T-shirt with turn up sleeves and a loose crew neck. Long bottoms have an elasticated waistband with mock drawcord. Comes in a bag with drawcord closure. Tag free. KEEP AWAY FROM FIRE.

Weight: 140 gsm

Size:	XS	S	M	L	XL	XXL	3XL
Ladies size:	8	10	12	14	16	18	20

*Heather grey 85% cotton/15% viscose.



Sedex No Label

TC52

TOWEL CITY



TC52 Towel City Short PJ's in a Bag

100% cotton single jersey.*
Vest top with racer back. Shorts with side vents. Elasticated waistband with mock drawcord. Comes in a bag with drawcord closure. Tag free. KEEP AWAY FROM FIRE.

Weight: 140 gsm

Size:	XS	S	M	L	XL	XXL	3XL
Ladies size:	8	10	12	14	16	18	20

*Heather grey 85% cotton/15% viscose.



Sedex No Label

TC59 Towel City Kids Long PJ's

100% cotton single jersey.*
Crew neck t-shirt with turn up sleeves. Contrast herringbone taped neck. Long bottoms have an elasticated waistband with mock drawcord. Tag free. KEEP AWAY FROM FIRE.

Weight: 140 gsm

Age:	3-4	5-6	7-8	9-10	11-13
Height (cm):	98-104	110-116	122-128	134-140	146-164

*Heather grey 85% cotton/15% viscose.



Sedex No Label

TC55 Towel City Ladies Satin Long PJ's

95% polyester/5% elastane.
Shirt with notched collar. Self colour pearlised plastic buttons. Contrast piping around collar and centre front opening. Self fabric cuffs with contrast piping. Trousers have elasticated waistband with mock white drawcord. Contrast piping on leg ends. Twin needle hems. Tag free.

Weight: 95 gsm

Size:	XS/S	M/L	XL/XXL
Ladies size:	8/10	12/14	16/18
Chest (to fit):	30/34	34/38	38/42



No Label

TC59

TOWEL CITY



TC53 P764



TC55

TOWEL CITY





TC54

TOWEL CITY



TC50

TOWEL CITY



TC54 Towel City Ladies Satin Robe

95% polyester/5% elastane. Kimono style robe. 3/4 length sleeves. Self fabric tie front. Side pockets. Below knee length. Tag free. Suitable for sublimation printing.

Weight: 95 gsm

Size:	XS/S	M/L	XL/XXL
Ladies size:	8/10	12/14	16/18
Chest (to fit):	30/34	34/38	38/42



TC50 Towel City Ladies Cotton Wrap Robe

100% cotton single jersey.* Kimono style robe. Lightweight fabric. Soft on skin. Tie front. Short style. KEEP AWAY FROM FIRE.

Weight: 180 gsm

Size:	S	M	L	XL
Ladies size:	8/10	12/14	16/18	20/22
Length (cm):	94	97	100	103



*Heather grey 85% cotton/15% viscose.



TC57 Towel City Ladies Satin Cami Short PJ's

95% polyester/5% elastane. Loose fit top. V neck shape with facing. Bound armholes and spaghetti straps with metal adjusters. Shorts with elasticated waistband with mock drawcord. Wide leg shape. Tag free.

Weight: 95 gsm

Size:	XS/S	M/L	XL/XXL
Ladies size:	8/10	12/14	16/18
Chest (to fit):	30/34	34/38	38/42



TC51 Towel City Kids Robe

100% polyester. Lightweight fabric. Knee length. Kimono style. Tie front. Low flammability to BS5722. KEEP AWAY FROM FIRE.

Weight: 180 gsm

Age:	3-4	5-6	7-8
Chest (to fit):	22/24	24/26	26/28
Age:	9-10	11-13	
Chest (to fit):	28/30	30/33	



TC57

TOWEL CITY



TC51

TOWEL CITY

TC811



NEW

TOWEL CITY

TC811 Towel City Kids Poncho

100% polyester microfibre. Lightweight. Three panel hood. Kangaroo pocket with media pocket. Side vents. Excellent absorbency qualities.

Weight: 280 gsm

Age: 3-5 6-9 10-13



TC810

TOWEL CITY



NEW

TC810 Towel City Adult Poncho

100% polyester microfibre. Lightweight. Three panel hood. Kangaroo pocket with media pocket. Side vents. Excellent absorbency qualities.

Weight: 280 gsm

Size: One size



TC21



TOWEL CITY

TC21 Towel City Kimono Towelling Robe

100% heavyweight cotton terry. Two pockets. Tie front. Excellent absorbency qualities. Hanging loop.

Weight: 400 gsm

Size:	S/M	L/XL
Length (cm):	110	115



TC933 Towel City Hair Wrap

100% cotton terry towelling. Two panel hair wrap. Elastic loop for fastening. Excellent absorbency qualities.

Weight: 400 gsm

Size: One size



TC86



TOWEL CITY

TC86 Towel City Waffle Robe

65% polyester/35% cotton waffle weave. Lightweight fabric. Kimono style robe. Two patch pockets. Tie front. Hanging loop.

Weight: 225 gsm

Size:	S/M	L/XL
Length (cm):	120	130



TC933

TOWEL CITY



NEW



TC67

TOWEL CITY

TC67 Towel City Open Toe Slippers

100% polyester terry/mixed fibre sole. Open toe. Adjustable hook and loop top closure. Padded sole.

Weight: 160 gsm

Shoe size: 4-7 8-11
European size: 36-41 42-46



white



TC66

TOWEL CITY

TC66 Towel City Waffle Mule Slippers

100% polyester. Waffle weave.

Weight: 220 gsm

Shoe size: 4-7 8-11
European size: 36-41 42-46



white



TC64

TOWEL CITY

TC64 Towel City Classic Terry Slippers

100% cotton towelling/mixed fibre soles. Open toe cotton terry outer. Soft padded sole.

Weight: 400 gsm

Shoe size: 4-7 8-11
European size: 36-41 42-46



white

navy



TC01

TOWEL CITY

TC01 Towel City Luxury Face Cloth

100% ringspun cotton. Luxurious thick pile. Herringbone style single border. Excellent absorbency qualities. Hanging loop.

Weight: 550 gsm

Dimensions: 30 x 30 cm



black

white

navy

royal blue

steel grey

red



TC36

TOWEL CITY

TC36 Towel City Babies Hooded Towel

100% cotton towelling. Contrast binding. Exceptional softness. Excellent absorbency qualities.

Weight: 360 gsm

Dimensions: 75 x 75 cm



white/white

white/blue

white/pink



TC62

TOWEL CITY

TC62 Towel City Beauty Hairband

80% cotton/20% polyester terry towelling. Adjustable tear release closure. Ideal for facials and beauticians' use.

Weight: 240 gsm

Size: One size



white



W701

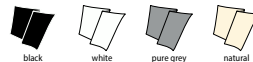
Westford Mill

W701 Westford Mill Tea Towel

100% cotton. Tear out label.

Weight: 170 gsm

Dimensions: 50 x 70 cm



black

white

pure grey

natural



TC41

TOWEL CITY

TC41 Towel City Tea Towel

100% cotton. Ideal print surface. Hanging loop. Seamed edge. Tear out label.

Weight: 120 gsm

Dimensions: 50 x 70 cm



white



024 TOWELS

TC03

TC04

TC05

TC06

TOWEL
CITY



**TC03 Towel City
Luxury Hand Towel**

100% ring spun cotton.
Luxurious thick pile.
Herringbone style double border.
Excellent absorbency qualities.
Hanging loop.

Weight: 550 gsm

Dimensions: 50 x 90 cm

**TC04 Towel City
Luxury Bath Towel**

Dimensions: 70 x 130 cm

TC05 Towel City
Luxury Guest Towel**

Dimensions: 30 x 50 cm

**TC06 Towel City*
Luxury Bath Sheet**

Dimensions: 100 x 150 cm



89200

89000

89001

89002

SOL'S
the fair spirit



**89200 SOL'S
Island 30 Guest Towel**

100% cotton.
One smooth strip for decoration.
Machine washable at 60°C.

Weight: 400 gsm

Dimensions: 30 x 50 cm

**89000 SOL'S
Island 50 Hand Towel**

Dimensions: 50 x 100 cm

**89001 SOL'S
Island 70 Bath Towel**

Dimensions: 70 x 140 cm

**89002 SOL'S
Island 100 Bath Sheet**

Dimensions: 100 x 150 cm



60°



03095

03096

03097

SOL'S
the fair spirit

03095 SOL'S Peninsula 50 Hand Towel
100% combed cotton french terry. One smooth 6cm strip for decoration. Hanging loop. Machine washable at 60°C.

Weight: 550 gsm

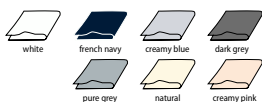
Dimensions: 50 x 100 cm

03096 SOL'S Peninsula 70 Bath Towel

Dimensions: 70 x 140 cm

03097 SOL'S Peninsula 100 Bath Sheet

Dimensions: 100 x 150 cm



60°

TC43 Towel City Classic Hand Towel
100% cotton towelling. Hardwearing. Soft on the skin. Herringbone double border detailing. Excellent absorbency qualities. Hanging loop.

Weight: 400 gsm

Dimensions: 50 x 90 cm

TC44 Towel City Classic Bath Towel

Dimensions: 70 x 130 cm



TC43

TC44

TOWEL CITY

TC33 Towel City Printable Border Golf Towel
100% cotton. Luxurious thick pile. Flat weave border. TC33 has a metal eyelet and hook. TC34 and TC35 have a hanging loop. Excellent absorbency qualities.

Weight: 550 gsm

Dimensions: 30 x 60 cm
Print area: 10 cm



TC34 Towel City Printable Border Hand Towel

Dimensions: 50 x 100 cm
Print area: 11 cm

TC35 Towel City Printable Border Bath Towel

Dimensions: 70 x 140 cm
Print area: 12 cm

TOWEL CITY

TC42 Towel City Sports Towel
100% cotton towelling. Hardwearing. Soft on the skin. Chevron style double border. Excellent absorbency qualities. Hanging loop.

Weight: 400 gsm

Dimensions: 30 x 110 cm



TC42

SOL'S
the fair spirit

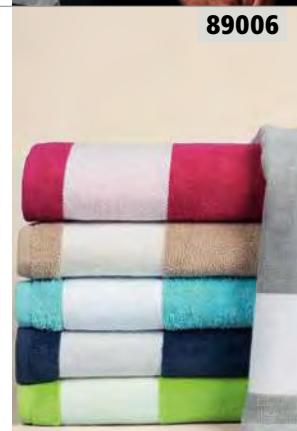
89006 SOL'S Lagoon Beach Towel
100% velvet cotton. Smooth white strips on each end for decoration. 60°C wash.

Weight: 400 gsm

Dimensions: 100 x 160 cm



60°



89006



TC13

TOWEL CITY

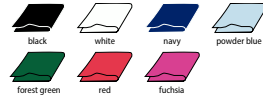
TC13 Towel City

Luxury Golf Towel

100% ringspun cotton.
Golf towel with grommet and hook.
Excellent absorbency qualities.

Weight: 550 gsm

Dimensions: 30 x 50 cm



TC02

TOWEL CITY

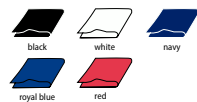
TC02 Towel City

Gym Towel

100% ringspun cotton.
Durable thick pile. Herringbone style
single border. Excellent absorbency
qualities. Hanging loop.

Weight: 550 gsm

Dimensions: 40 x 60 cm



TC07

TOWEL CITY

TC07 Towel City

Luxury Pocket Gym Towel

100% ringspun cotton.
Pocket with self colour zip closure
(29 x 17cm). Bound edges. Tear out label.

Weight: 550 gsm

Dimensions: 30 x 100 cm



TC19

TOWEL CITY

TC19 Towel City

Microfibre Golf Towel

100% polyester microfibre.
Quick drying. Highly absorbent. Three
fold design. Hook and rivet detail.

Weight: 280 gsm

Dimensions: 40 x 55 cm



01208

01209

01210

02936

SOL'S
the fair spirit



01208 SOL'S

Atoll 30 Microfibre Guest Towel

90% microfibre polyester/10% polyamide.
Overlock finishing.
Quick drying.

Weight: 190 gsm

Dimensions: 30 x 50 cm



01209 SOL'S

Atoll 50 Microfibre Hand Towel

Dimensions: 50 x 100 cm

01210 SOL'S

Atoll 70 Microfibre Bath Towel

Dimensions: 70 x 120 cm

02936 SOL'S

Atoll 100 Microfibre Bath Sheet

Dimensions: 100 x 150 cm

TC16 Towel City Microfibre Guest Towel

100% polyester.
Durable, soft pile.
Lightweight.
Super absorbent.
Quick drying.
Stitched border.

Weight: 280 gsm

Dimensions: 30 x 50 cm



TC17 Towel City Microfibre Sports Towel

Dimensions: 30 x 110 cm

TC18 Towel City Microfibre Bath Towel

Dimensions: 70 x 140 cm

TC16

TC17

TC18

TOWEL CITY



JustHoods[®] AWD[®] JustCool[®] AWD[®] JustPolos[®] AWD[®] JustTs[®] AWD[®] AWD is A ACADEMY AFD[®] ANTHEM[®]

BABYBUGZ[®] BagBase[®] Beechfield ORIGINAL HEADWEAR BELLA+CANVAS BROOK TAVERNER canterbury

Comfort Grip[®] CRAGHOPPERS DARE 2B DENNY'S LONDON[®] écologie[®] by AWD is FINDEN+HALES

FLIGHT[®] of rupoons FRONTROW & CO HERITAGE CLOTHING FRUIT & LOOM[®] GAMEGEAR[®] GILDAN[®] GLENMUIR 1897

HENBURY JOSEPH ALAN LONDON KARIBAN KARIBAN Vintage ki-mood kup KUSTOM KIT

larkwood[®] Recy and Indus Collection leChef PROFESSIONAL mantis one by mantis Mumbles[®] NEO BLU PEOPLE IN MOTION NL NEXT LEVEL APPAREL

ORIGINAL FNB FORTIX FORTIX PORTWEST PREMIER[®] PROACT[®] QUADRA[®]

REGATTA[®] REGATTA[®] REGATTA[®] REGATTA[®] REGATTA[®] REGATTA[®] REGATTA[®] REGATTA[®]

Result[®] SAFE GUARD by Result[®] WORK GUARD by Result[®] Result[®] HEADWEAR Result[®] GENUINE RECYCLED Result[®] core Result[®] urban Result[®] winter

RTP[®] APPAREL RUSSELL RUSSELL COLLECTION RUSSELL SCHOOLGEAR SF SF SOL'S the fair spirit

So DENIM by AWD[®] SPIRO BIKEWEAR SPIRO splashmacs SUNDERLAND OF SCOTLAND STORMTECH[®]

★SUPERSTAR by mantis TEE JAYS TOWEL CITY WARRIOR Westford Mill YOKO HILVIS