



V
VAQUITA
APPAREL

2022

THE COLLECTION

2022

THE COLLECTION

- Largest ever sustainable & organic range
- Corporate, workwear & uniform solutions
- Fashion & retail-ready styles
- Promotional & merchandising options
- Sports & teamwear
- Varsity, schoolwear, accessories & more...

We're happy to say that this year we have printed our brochures using FSC® certified paper.



Contents

Hoods

1 - 33



JH001

Just Hoods
AWDis



JH001F P270



JH001B P621



HOODS

JH001 AWDIs
College Hoodie

80% ringspun cotton/20% polyester.*

Soft cotton faced fabric.

Brushed back fleece.

Drop shoulder style.

Double fabric hood with self colour drawcord.

Front pouch pocket.

Ribbed cuffs and hem.

Twin needle stitching.

Tear out label.

Weight: 280 gsm

Size:	XS	S	M	L	XL
Chest (to fit):	34	36	40	44	48
Size:	XXL	3XL	4XL	5XL	
Chest (to fit):	52	56	60	62	

*Smoke colours 70% cotton/30% polyester.

**Charcoal 52% cotton/48% polyester.

▲Heather grey 75% cotton/25% polyester.

■Available in 4XL and 5XL.



Sedex



AW-APPROVED
VEGAN

002 STANDARD WEIGHT HOODIES

GD57 [18500]

GILDAN®
Heavy Blend™



GD57B P622



GD57 Gildan Heavy Blend™ Hooded Sweatshirt

50% cotton/50% polyester. Pre-shrunk. Air jet yarn, softer feel and reduced pilling. Drop shoulder style. Double fabric hood with self colour drawcord. Front pouch pocket. Ribbed trim with spandex at cuffs and hem. Twin needle stitching. Tear out label.

Weight: White 257 gsm, Cols 271 gsm

Size:	S	M	L
Chest (to fit):	34/36	38/40	42/44
Size:	XL	XXL	3XL*
Chest (to fit):	46/48	50/52	54/56
Size:	4XL*	5XL*	
Chest (to fit):	58/60	62/64	

*Available in 3XL, 4XL and 5XL.



Sedex

Tear Out

47101

SOL'S®
the fair spirit



47101 SOL'S Unisex Snake Hooded Sweatshirt

50% ringspun cotton/50% polyester. Brushed back fleece. Drop shoulder style. Fitted style. Unlined hood with flat self colour drawcord. Front pouch pocket. Elastane ribbed cuffs and hem. Twin needle stitching. Unbranded size label at neckline.

Weight: 280 gsm

Size:	S	M	L	XL
Chest (to fit):	36/38	38/40	41/42	43/44
Size:	XXL	3XL	4XL*	
Chest (to fit):	45/47	47/49	50/52	



*Available in 4XL.

03815 SOL'S Unisex Condor Hoodie

80% cotton/20% recycled polyester. Drop shoulder style. Brushed back fleece. Double fabric hood with self colour lace drawcord. Taped neck. Front pouch pocket. 2x2 ribbed cuffs and hem. Unbranded size label at neckline.

Weight: 280 gsm

Size:	XS	S	M
Chest (to fit):	35/36	36/38	38/40
Size:	L	XL	XXL
Chest (to fit):	41/42	43/44	45/47
Size:	3XL	4XL*	5XL*
Chest (to fit):	47/49	50/52	53/55

*Available in 4XL and 5XL.



03815

SOL'S®
the fair spirit





SS14 [622080]



SS14B

P621



SS801

P270

SS14 Fruit of the Loom Classic Hooded Sweatshirt

80% cotton/20% polyester.*
Drop shoulder style.
Double thickness hood with drawcord.
Front pouch pocket.
Cotton/Lycra® ribbed cuffs and hem.
Twin needle stitching.
Cut out label.

Weight: White and Heather Grey
260 gsm, Cols 280 gsm

Size:	S	M	L	XL
Chest (to fit):	35/37	38/40	41/43	44/46
Size:	XXL	3XL**▲	4XL▲	5XL■
Chest (to fit):	47/49	50/52	53/55	56/58

*Dark heather, heather royal, heather green, heather navy and heather red 60% cotton/40% polyester.

**Available in 3XL.

▲Available in 3XL and 4XL.

■Available in 3XL, 4XL and 5XL.



K333 Kustom Kit Hoodie

80% cotton/20% polyester.
Drop shoulder style. Two panel jersey lined hood with flat lace drawcord. Taped neck and shoulders. Front pouch pocket. Ribbed cuffs and hem. Twin needle stitching. Tear out label.

Weight: 280 gsm

Size:	XXS	XS	S	M	L
Chest (to fit):	28/30	32/34	36/38	40	42
Size:	XL	XXL	3XL	4XL*	
Chest (to fit):	44	46/48	50/52	54/56	

*Available in 4XL.



Sedex



K333

KUSTOM KIT.



RX350



HOODS

RX350 Pro RTX Pro Hoodie

55% polyester/45% cotton.
Modern fit. Lined hood.
Self colour adjustable drawcord.
Front pouch pocket.
Ribbed cuffs and hem.
Twin needle stitching.
60°C wash.

Weight: 300 gsm

Size:	S	M	L	XL	XXL
Chest (to fit):	36	40	44	48	52
Size:	3XL	4XL	5XL	6XL*	7XL*
Chest (to fit):	56	60	62	64	66

*Available in 6XL and 7XL.



Sedex

004 STANDARD WEIGHT HOODIES

HOODS

02991

SOL'S
the fair spirit



02991 SOL'S

Unisex Spencer Hooded Sweatshirt

80% ringspun cotton/20% polyester.*
Cotton faced fabric. Brushed back fleece.
Drop shoulder style. Lined hood with self
colour drawcord. Taped neck. Locker patch.
2x2 ribbed cuffs and hem. Front pouch pocket.
Unbranded size label at neckline.

Weight: 280 gsm

Size:	XS	S	M	L
Chest (to fit):	35/36	36/38	38/40	41/42
Size:	XL	XXL	3XL	
Chest (to fit):	43/44	45/47	47/49	



*Charcoal marl, heather denim and heather oxblood 60% cotton/40% polyester.
**Ash 79% cotton/20% polyester/1% viscose.
*Grey marl 75% cotton/20% polyester/5% viscose.

265M



265F P270



265B P622



265M Russell

Authentic Hooded Sweatshirt

80% combed ringspun cotton/20% polyester.
Cotton faced fabric. Brushed back fleece.
Drop shoulder style. Double fabric hood with
topstitch detail. Flat lace drawcord with
buttonhole eyelets. Taped neck. Front pouch
pocket with bartacks. Ear phone access.
1x1 ribbed cuffs and hem. Coverseamed around
hood, shoulders, armholes, cuffs and hem.

Weight: 280 gsm

Size:	XS	S	M	L	XL	XXL	3XL	4XL*
Chest (to fit):	34/36	36/38	38/40	40/42	42/44	44/46	46/48	48/50

*Available in 4XL.



JH002 AWDiS

SupaSoft Hoodie

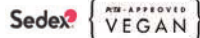
80% ringspun cotton/20% polyester.*
Soft feel peached fabric. Brushed back fleece. Drop shoulder style.
Three panel, double fabric hood with self colour flat drawcord.
Front pouch pocket. Ribbed cuffs and hem. Twin needle stitching.
Tear out label.

Weight: 280 gsm

Size:	XS	S	M	L	XL	XXL
Chest (to fit):	34	36	40	44	48	52



*Supa charcoal 52% ringspun cotton/48% polyester.
**Supa grey 75% ringspun cotton/25% polyester.



JH002

JustHoods
AWDiS



SSE14 Fruit of the Loom

Premium Hooded Sweatshirt

70% cotton/30% polyester.
Drop shoulder style. Double thickness hood with
drawcord. Front pouch pocket. Cotton/elastane
ribbed cuffs and hem. Twin needle stitching.

Weight: Heather Grey 260 gsm, Cols 280 gsm

Size:	S	M	L	XL	XXL
Chest (to fit):	35/37	38/40	41/43	44/46	47/49



SSE14 [621520]



SSE14B Online



SS104 [621680]



SS104 Fruit of the Loom

No Pocket Hoodie

80% cotton/20% polyester.
Brushed back fleece. Drop shoulder style.
Two panel double fabric hood with self colour drawcord.
No front pocket to allow maximum print area.
Ribbed cuffs and hem with Lycra®. Twin needle stitching. Tear out label.



Weight: White and Heather Grey 260 gsm, Cols 280 gsm

Size:	XS	S	M	L	XL	XXL	3XL
Chest (to fit):	32/34	35/37	38/40	41/43	44/46	47/49	50/52



Tear Out

JH011

JustHoods
AWDis



JH011 AWDIs

Epic Print Hoodie

80% ringspun cotton/20% polyester.*
Soft cotton faced fabric. Brushed back fleece. Drop shoulder style. Two panel double fabric hood with flat lace drawcord. No front pocket to allow maximum print area. Ribbed cuffs and hem. Twin needle stitching. Tear out label.



Weight: 280 gsm

Size:	XS	S	M	L	XL	XXL	3XL
Chest (to fit):	34	36	40	44	48	52	56

*Charcoal 52% cotton/48% polyester.

**Heather grey 75% cotton/25% polyester.



Sedex

Tear Out

JH004 AWDIs

Electric Hoodie

85% polyester/15% ringspun cotton.
Brushed back fleece. Drop shoulder style.
Double fabric hood with self colour flat lace drawcord.
Front pouch pocket. Ribbed cuffs and hem.
Twin needle stitching. Tear out label.



Weight: 280 gsm

Size:	S	M	L	XL	XXL
Chest (to fit):	36	40	44	48	52



Tear Out

JH006 AWDIs

Sports Polyester Hoodie

100% polyester.
Brushed back fleece. Drop shoulder style.
Three panel double fabric hood.
Self colour round drawcord with metal tips.
Front pouch pocket. Self fabric cuffs and hem.
Twin needle stitching. Tear out label.

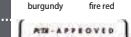


Weight: 200 gsm

Size:	S	M	L	XL	XXL	3XL
Chest (to fit):	36	40	44	48	52	56



Tear Out



JH004

JustHoods
AWDis



JH004B P623

JH006

JustHoods
AWDis



JH006B P623

006 STANDARD WEIGHT HOODIES

HOODS

TL710



TOMBO

TL710 Tombo

Unisex Athleisure Hoodie

60% cotton/40% polyester. Brushed back fleece. Slim fit. Three panel jersey lined hood. Front pouch pocket. Longer length. Ribbed cuffs and hem with elastane. Tear out label.

Weight: 250 gsm

Size:	XS	S	M
Chest (to fit):	34/36	36/38	38/40
Size:	L	XL	XXL
Chest (to fit):	42	44/46	48



Tear Out

SF527



Sedex

Tear Out



SF527 SF

Unisex Oversized Hoodie

60% cotton/40% polyester.* Brushed back fleece. Drop shoulder style. Two panel jersey lined hood with self colour flat lace drawcord. Taped neck. Front pouch pocket. Deep ribbed cuffs and hem. Twin needle topstitching. Tear out label.

Weight: 250 gsm

Size:	XXS	XS	S	M
Chest (to fit):	32/34	34/36	36/38	38/40
Size:	L	XL	XXL	
Chest (to fit):	42	44/46	48	

*Heather grey 75% cotton/20% polyester/5% viscose.



Cut Out

SS121 [621400]



FRUIT OF THE LOOM

SS121 Fruit of the Loom Lightweight Hooded Sweatshirt

80% cotton/20% polyester. Raglan sleeves. Hood with self colour flat drawcord. Front pouch pocket. Cotton/Lycra® ribbed cuffs and hem. Twin needle stitching. Cut out label.

Weight: 240 gsm

Size:	S	M	L
Chest (to fit):	35/37	38/40	41/43
Size:	XL	XXL	
Chest (to fit):	44/46	47/49	



SS181 P271

SS121B P621

CV3719

BELLA+CANVAS



CV3719 Bella+Canvas Unisex Pullover Hoodie

52% airlume combed ringspun cotton/48% polyester.* Soft feel fabric. Drop shoulder style. Retail fit. Unlined hood with white drawcord. Front pouch pocket. Ribbed cuffs and hem. Tear out label.

Weight: DTG 270 gsm, Cols 220 gsm

Size:	XS	S	M
Chest (to fit):	31/34	34/37	38/41
Size:	L	XL	XXL
Chest (to fit):	42/45	46/49	50/53

*DTG 70% airlume combed ringspun cotton/30% polyester.



Tear Out

NX9303 Next Level

Unisex Fleece Pullover Hoodie

80% cotton/20% polyester. Brushed back fleece. Drop shoulder style. Two panel jersey lined hood with flat natural drawcord. Taped neck. Locker patch. Front pouch pocket. 1x1 ribbed cuffs and hem. Tear out label.

Weight: 250 gsm

Size:	XS	S	M	L
Chest (to fit):	33/35	35/38	38/41	43/44
Size:	XL	XXL	3XL	
Chest (to fit):	45/48	48/52	53.5/56	



Tear Out

NX9303

NL NEXT LEVEL APPAREL





NX9304

NL NEXT LEVEL APPAREL



NX9304 Next Level

Unisex Sueded Pullover Hoodie

60% combed ringspun cotton/40% polyester. Brushed back fleece. Drop shoulder style. Two panel hood with self colour drawcord. Taped neck. Front pouch pocket. 1x1 ribbed cuffs and hem. Twin needle stitching. Tear out label.



Weight: 280 gsm

Size:	XS	S	M	L
Chest (to fit):	33/35	35/38	38/41	43/44
Size:	XL	XXL	3XL	
Chest (to fit):	45/48	48/52	53.5/56	



CV3742 Bella+Canvas

Unisex Raw Seam Hoodie

52% airlume combed ringspun cotton/48% polyester. Brushed back fleece. Drop shoulder style. Retail fit. Unlined hood with self colour drawcord. Front pouch pocket. Ribbed cuffs and hem. Raw seam finish throughout. Tear out label.



Weight: 230 gsm

Size:	XS	S	M	L	XL	XXL
Chest (to fit):	31/34	34/37	38/41	42/45	46/49	50/53



CV3742

BELLA+CANVAS



CV3329

BELLA+CANVAS

CV3329 Bella+Canvas

Unisex Sueded Hoodie

52% airlume combed ringspun cotton/48% polyester.* Brushed back fleece. Drop shoulder style. Retail fit. Unlined hood with self colour drawcord. Front pouch pocket. Ribbed cuffs and hem. Tear out label.



Weight: 230 gsm

Size:	XS	S	M	L	XL	XXL
Chest (to fit):	31/34	34/37	38/41	42/45	46/49	50/53



*Athletic heather 90% airlume combed ringspun cotton/10% polyester.

RG119 Regatta

Snuggler Oversized Fleece Hoodie

100% polyester. Brushed back fleece. Drop shoulder style. Oversized fit. Large front pouch pocket. Ribbed cuffs. Open hem. Cut out label.



Weight: 260 gsm

Size: One size



RG119 [TRF667]

REGATTA PROFESSIONAL



GD57

Heavy Blend™
Hooded Sweatshirt

271 gsm

S-5XL*

Sizes 3XL-5XL only available in
selected colours

36 colours

P258



TEAR AWAY
LABEL

GILDAN®
Heavy Blend™





JH017

Just Hoods
AWDis

Just Hoods
AWDis

JH090 AWDIs
Washed Hoodie

55% ringspun cotton/45% polyester. Soft cotton faced fabric. Brushed back fleece. Washed effect. Drop shoulder style. Double fabric hood with drawcord. Front pouch pocket. Ribbed cuffs and hem. Twin needle stitching. Due to washing process each garment is unique.

Weight: 280 gsm

Size:	XS	S	M	L
Chest (to fit):	34	36	40	44
Size:	XL	XXL	3XL	
Chest (to fit):	48	52	56	



JH090



JH017 AWDIs

Surf Hoodie

80% ringspun cotton/20% polyester. Soft cotton faced, marl effect fabric. Drop shoulder style. Double fabric hood with flat lace drawcord. Front pouch pocket. Ribbed cuffs and hem. Tear out label.

Weight: 280 gsm

Size:	XS	S	M	L	XL	XXL	3XL
Chest (to fit):	34	36	40	44	48	52	56



NX9302 Next Level

Unisex PCH Standard Pullover Hoodie

60% cotton/40% polyester. Brushed back fleece. Drop shoulder style. Two panel hood with self colour drawcord. Taped neck. Locker patch. Front pouch pocket. 1x1 ribbed cuffs and hem. Twin needle stitching. Tear out label.

Weight: 250 gsm

Size:	XS	S	M	L	XL	XXL	3XL
Chest (to fit):	33/35	35/38	38/41	43/44	45/48	48/52	53.5/56



261M Russell

Authentic Melange Hoodie

75% combed ringspun cotton/21% polyester/4% viscose.* Brushed back fleece. 100% cotton outer layer. Drop shoulder style. Straight modern cut. Double layer hood with flat chunky drawcord. Herringbone taped neck. Locker patch. Offset shoulder seams. Front pouch pocket. Headphone access. Elastane ribbed cuffs and hem. Coverseamed armholes, cuffs and hem. Unbranded size label.

Weight: 280 gsm

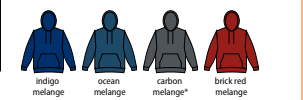
Size:	XS	S	M	L
Chest (to fit):	34/36	36/38	38/40	40/42
Size:	XL	XXL	3XL	
Chest (to fit):	42/44	44/46	46/48	

*Carbon melange 77% cotton/23% polyester.



261M

261F Online



Just Hoods
AWDis

JH012 AWDIs

Cosmic Blend Hoodie

70% ringspun cotton/30% polyester. Soft cotton faced, marl effect fabric. Brushed back fleece. Double fabric hood with flat lace drawcord. Front pouch pocket. Ribbed cuffs and hem. Twin needle stitching. Tear out label.

Weight: 280 gsm

Size:	XS	S	M
Chest (to fit):	34	36	40
Size:	L	XL	XXL
Chest (to fit):	44	48	52



JH012



NX9302

NL NEXT LEVEL APPAREL



010 HEAVYWEIGHT HOODIES

575M



575B P622



575M Russell Hooded Sweatshirt

50% ringspun combed cotton/50% polyester.* Drop shoulder style. Double thickness hood with topstitch detail. Flat chunky lace drawcord with buttonhole eyelets. Taped neck. Slim sleeves with wider cuffs. Front pouch pocket with bartacks. Tubular body.

Weight: 295 gsm

Size:	XS	S	M	L	XL	XXL
Chest (to fit):	34/36	36/38	38/40	40/42	42/44	44/46

*Light oxford 53% polyester/47% cotton.



13251 SOL'S

Unisex Slam Hooded Sweatshirt

50% ringspun cotton/50% polyester. Brushed back fleece. Drop shoulder style. Self colour flat drawcord. Front pouch pocket. Elastane ribbed cuffs and hem.

Weight: 320 gsm

Size:	XS	S	M
Chest (to fit):	35/36	36/38	38/40
Size:	L	XL	XXL
Chest (to fit):	41/42	43/44	45/47



13251

SOL'S
the fair spirit



13255 P623



JH101

Just Hoods®
AWDis



JH101 AWDIs

Graduate Heavyweight Hoodie

70% ringspun cotton/30% polyester.* Soft cotton faced fabric. Brushed back fleece. Drop shoulder style. Three panel, single jersey lined hood with flat lace drawcord. Front pouch pocket with flatlock stitching detail. Ribbed cuffs and hem. Twin needle stitching. Tear out label.

Weight: 330 gsm

Size:	XS	S	M	L	XL	XXL	3XL
Chest (to fit):	34	36	40	44	48	52	56

*Charcoal 55% polyester/45% cotton.

**Heather grey 65% cotton/35% polyester.



Sedex { AW APPROVED }
VEGAN



Tear Out



GD54 [12500]

GILDAN
DryBlend®

GD54 Gildan DryBlend® Hooded Sweatshirt

50% cotton/50% polyester. Pre-shrunk. Air jet yarn, softer feel and reduced pilling. Moisture wicking properties. Double fabric hood with self colour drawcord. Front pouch pocket. Ribbed trim with spandex at cuffs and hem. Twin needle stitching. Tear out label (some colours in transition).

Weight: White 297 gsm, Cols 305 gsm

Size:	S	M	L	XL	XXL
Chest (to fit):	34/36	38/40	42/44	46/48	50/52



JH020

JustHoods
AWDis



JH020 AWDIs

Street Hoodie

70% ringspun cotton/30% polyester.* Soft cotton faced fabric. Brushed back fleece. Drop shoulder style. Three panel double fabric hood with self colour flat lace drawcord. V neck insert detail. Locker patch. Hanging loop at back of neck. Front pouch pocket with hidden media pocket and small opening for ear phone cord feed. Hidden ear phone loops. Ribbed cuffs and hem. Thumbholes on cuffs. Twin needle stitching. Tear out label.

Weight: 330 gsm

Size:	S	M	L	XL	XXL
Chest (to fit):	36	40	44	48	52

*Charcoal 52% cotton/48% polyester.
**Heather grey 65% cotton/35% polyester.



GH062 Gildan Hammer Hooded Sweatshirt

80% combed ringspun cotton/20% polyester.* Soft cotton faced fabric. Classic fit. Drop shoulder style with rolled forward shoulder seams. Three panel unlined hood. Crossover neck detail with ribbed edge. Half moon locker patch. Front pouch pocket. 1x1 ribbed cuffs and hem with spandex. Single needle topstitched side seams. Twin needle stitching. Tear out label.

Weight: 305 gsm

Size:	S	M	L	XL	XXL	3XL
Chest (to fit):	34/36	38/40	42/44	46/48	50/52	54/56

*Graphite heather 60% cotton/40% polyester.



T5430 Tee Jays Hooded Sweatshirt

70% ringspun cotton/30% polyester. Brushed back fleece. Drop shoulder style. Two panel lined hood with self colour drawcord. Branded metal eyelets. Front pouch pocket. Ribbed cuffs and hem with elastane. 60°C wash.

Weight: 310 gsm

Size:	S	M	L	XL	XXL	3XL
Chest (to fit):	36/38	38/40	41/42	43/44	45/47	47/49



T5430

tee JAYS



T5431 P271

NEW COLOURS



GH062 [HF500]

GILDAN
HAMMER



JH021

Just Hoods®
AWDis

HOODS



JH021 AWDIs

Cross Neck Hoodie

70% ringspun cotton/30% polyester.*
Soft cotton faced fabric. Brushed back fleece. Drop shoulder style.
Three panel double fabric hood with flat lace drawcord.
Crossover neck detail. Front pouch pocket.
Ribbed cuffs and hem. Thumbholes on cuffs.
Twin needle stitching. Tear out label.

Weight: 330 gsm

Size:	XS	S	M	L	XL	XXL
Chest (to fit):	34	36	40	44	48	52

*Charcoal 52% cotton/48% polyester.

**Heather grey and black smoke 65% cotton/35% polyester.





JH100
Just Hoods
AWDis

JH100 AWDIs
Chunky Hoodie

80% ringspun cotton/20% polyester.*
Soft cotton faced fabric.
Brushed back fleece. Drop shoulder style.
Double fabric hood with heather grey waffle fabric inner.
Chunky white flat lace drawcord. Two front pockets.
Deep ribbed cuffs and hem. Overlock stitching detail. Tear out label.

Weight: 400 gsm

Size:	XS	S	M	L	XL	XXL
Chest (to fit):	34	36	40	44	48	52

*Charcoal 52% cotton/48% polyester.
**Heather grey 75% cotton/25% polyester.



03196 NEOBLU
Nicholas French Terry Hoodie

85% combed cotton/15% polyester.
Brushed back fleece. Drop shoulder style.
Jersey lined hood with self colour drawcord. Taped neck. Half moon back yoke.
Front pouch pocket. 2x2 ribbed cuffs and hem. Unbranded size label.

Weight: 400 gsm

Size:	S	M	L	XL	XXL	3XL	4XL
Chest (to fit):	36/38	38/40	41/42	43/44	45/47	47/49	50/52



03196

NEOBLU
PEOPLE IN MOTION



03197 P271



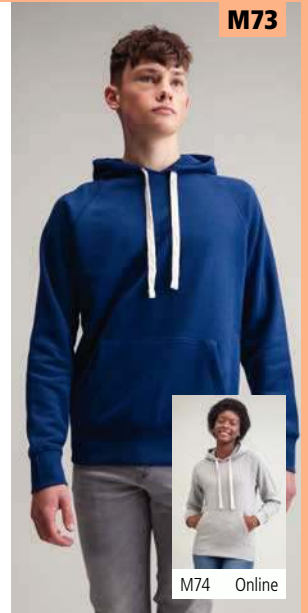
★SUPERSTAR
by mantis

M73 Superstar by Mantis Hoodie

80% cotton/20% polyester.
In transition to using organic cotton.
Soft peached fabric with brushed inner.
Raglan sleeves. Waffle lined hood with flat natural drawcord. Taped neck. Front pouch pocket with flatlock stitching. Deep ribbed cuffs and hem. Tear out label.

Weight: 330 gsm

Size:	S	M	L
Chest (to fit):	36/38	39/41	42/44
Size:	XL	XXL	
Chest (to fit):	45/47	48/49	



M73

M74 Online

KARIBAN
Vintage

KV2308 Kariban Vintage Hooded Sweatshirt

80% cotton/20% polyester.*
Soft peached finish. Brushed back fleece.
Drop shoulder style. Two panel lined hood with round natural drawcord.
Metal eyelets and drawcord tips.
Double herringbone twill taped neck.
Front pouch pocket with ribbed opening.
Ribbed cuffs and hem.
Specifically treated to appear aged.
Due to the dyeing process each garment is unique.
Unbranded size label at neckline.

Weight: 350 gsm

Size:	S	M	L
Chest (to fit):	34/36	38	40
Size:	XL	XXL	
Chest (to fit):	42	44/46	

*Ash heather grey 79% cotton/20% polyester/1% viscose.

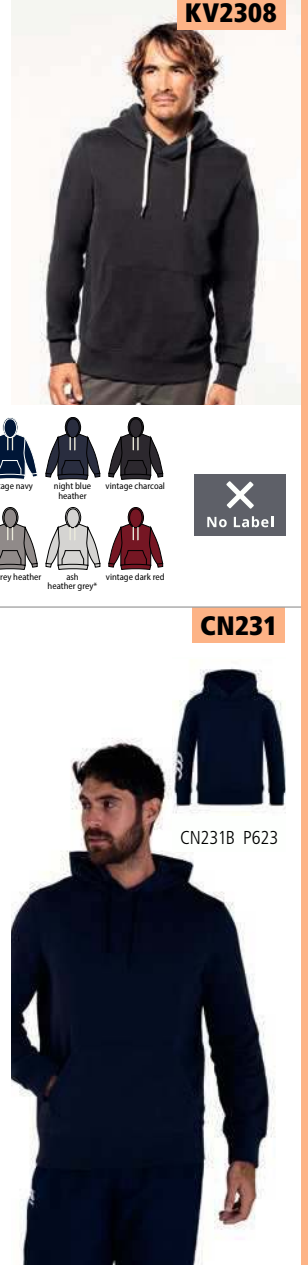


CN231 Canterbury Club Hoodie

55% cotton/45% polyester.
Drop shoulder style.
Jersey lined hood with self colour drawcord.
Forward facing shoulder seams.
Front pouch pocket.
Ribbed cuffs and hem.
Branding on lower right sleeve.

Weight: 300 gsm

Size:	XS	S	M	L
Chest (to fit):	33	36	40	43
Size:	XL	XXL	3XL	
Chest (to fit):	46	49	52	



CN231



CN231B P623

JH001F

Just Hoods®
AWDis



JH001 P257



JH001B P621

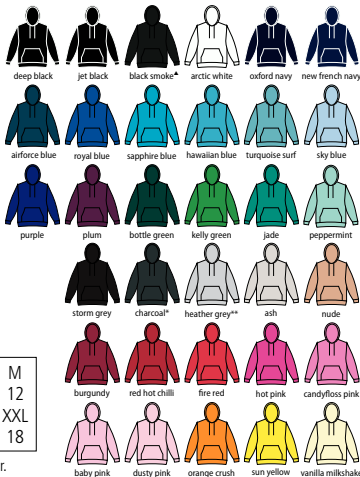
JH001F AWDIs Ladies College Hoodie

80% ringspun cotton/20% polyester.*
Soft cotton faced fabric. Brushed back fleece. Drop shoulder style. Ladies fit. Double fabric hood with self colour drawcord. Front pouch pocket with ribbed edge. Ribbed cuffs and hem. Twin needle stitching. Tear out label.

Weight: 280 gsm

Size:	XS	S	M
Ladies size:	8	10	12
Size:	L	XL	XXL
Ladies size:	14	16	18

*Charcoal 52% cotton/48% polyester.
**Heather grey 75% cotton/25% polyester.
▲Black smoke 70% cotton/30% polyester.



SS801 [620380]



SS14 P259



SS14B P621

SS801 Fruit of the Loom Classic Lady Fit Hooded Sweatshirt

80% cotton/20% polyester.*
Drop shoulder style. Ladies fit. Double fabric hood with self colour drawcord. Front pouch pocket. Shaped side seams. Cotton/Lycra® ribbed cuffs and hem. Twin needle stitching. Cut out label.

Weight: White and Heather Grey 260 gsm, Cols 280 gsm

Size:	XS	S	M	L	XL	XXL
Ladies size:	8	10	12	14	16	18
Chest (to fit):	30	32	34	36	38	40

*Dark heather, heather royal, heather green, heather navy and heather red 60% cotton/40% polyester.



265F Russell Ladies Authentic Hooded Sweatshirt

80% combed ringspun cotton/20% polyester. Cotton faced fabric. Brushed back fleece. Drop shoulder style. Ladies fit. Double fabric hood with topstitch detail. Flat lace drawcord with buttonhole eyelets. Taped neck. Front pouch pocket with bartacks. Ear phone access. 1x1 ribbed cuffs and hem. Coverseamed around hood, shoulders, armholes, cuffs and hem.

Weight: 280 gsm

Size:	XS	S	M	L	XL
Ladies size:	8	10	12	14	16
Chest (to fit):	30/32	32/34	34/36	36/38	38/40



265F



265M P260



265B P622





CV3719
BELLA+CANVAS



CV3719 Bella+Canvas Unisex Pullover Hoodie

52% airlume combed ringspun cotton/48% polyester.*
Soft feel fabric.
Drop shoulder style.
Retail fit.
Unlined hood with white drawcord.
Front pouch pocket.
Ribbed cuffs and hem.
Tear out label.



Weight: DTG 270 gsm, Cols 220 gsm

Size:	XS	S	M
Chest (to fit):	31/34	34/37	38/41
Size:	L	XL	XXL
Chest (to fit):	42/45	46/49	50/53

*DTG 70% airlume combed ringspun cotton/30% polyester.



SS181 Fruit of the Loom Lady Fit Lightweight Hooded Sweatshirt

80% cotton/20% polyester.
Raglan sleeves. Ladies fit. Hood with self colour flat drawcord. Front pouch pocket. Shaped side seams.
Cotton/Lycra® ribbed cuffs and hem.
Twin needle stitching. Cut out label.



Weight: 240 gsm

Size:	XS	S	M	L	XL	XXL
Ladies size:	8	10	12	14	16	18
Chest (to fit):	30	32	34	36	38	40



SS181 [621480]



SS121 P262



SS121B P621

03197



03196 P269



03197 NEOBLU

Ladies Nicholas French Terry Hoodie

85% combed cotton/15% polyester.
Brushed back fleece. Drop shoulder style.
Jersey lined hood with self colour drawcord. Taped neck. Half moon back yoke.
Front pouch pocket. 2x2 ribbed cuffs and hem. Unbranded size label.



Weight: 400 gsm

Size:	S	M	L	XL	XXL	3XL
Ladies size:	8/10	10/12	12/14	14/16	16/18	18/20



T5431 Tee Jays

Ladies Raglan Hooded Sweatshirt

70% ringspun cotton/30% polyester.
Brushed back fleece. Raglan sleeves.
Two panel lined hood. Self colour drawcord with metal tips.
Branded eyelets. Front pouch pocket.
Deep ribbed cuffs and hem with elastane.
60°C wash.



Weight: 310 gsm

Size:	S	M	L	XL	XXL
Ladies size:	8/10	10/12	12/14	14/16	16/18



T5431



T5430 P267



SOL'S®

the fair spirit



NEW

03815 **SOL'S UNISEX
CONDOR HOODIE**

P258

**80% cotton
20% recycled polyester**





JH016

JustHoods®
AWDis



{ AEW-APPROVED }
VEGAN

SK516 SF
Ladies Cropped Slounge Hoodie

Black 80% cotton/20% polyester.
Heather grey 70% cotton/30% polyester.
Brushed back fleece. Drop shoulder style.
Two panel hood with self colour drawcord.
Taped neck. Cropped raw edge hem.
Ribbed cuffs. Tear out label.

Weight: 280 gsm

Size:	XS	S	M
Ladies size:	8	10	12
Chest (to fit):	30/32	32/34	34/36
Size:	L	XL	
Ladies size:	14	16	
Chest (to fit):	36/38	38/40	



SK516

HOODS

JH016 AWDIs
Ladies Cropped Hoodie

80% ringspun cotton/20% polyester.*
Soft cotton faced fabric. Brushed back fleece.
Drop shoulder style. Ladies fit. Double fabric hood with self colour flat lace drawcord. Front pouch pocket. Cropped length. Ribbed cuffs. Overlock stitching on hem. Tear out label.

Weight: 280 gsm

Size:	XXS	XS	S	M	L	XL
Ladies size:	6	8	10	12	14	16

*Heather grey 75% cotton/25% polyester.



Sedex { AEW-APPROVED }
VEGAN



JustHoods®
AWDis

JH015 AWDIs
Ladies Hoodie Dress

Jet black 80% cotton/20% polyester.
Heather grey 75% cotton/25% polyester.
Soft cotton faced fabric. Brushed back fleece. Drop shoulder style. Relaxed ladies fit. Double fabric hood with self colour flat lace drawcord. Taped neck. Front pouch pocket. Long length. Ribbed cuffs and hem. Twin needle stitching. Tear out label.

Weight: 280 gsm

Size:	XS	S	M
Ladies size:	8	10	12
Size:	L	XL	XXL
Ladies size:	14	16	18



JH015

BL7502 Bella+Canvas
Ladies Cropped Hoodie

52% ringspun combed cotton/48% polyester.
Brushed back fleece. Drop shoulder style. Unlined hood.
Self colour drawcord. Cropped length. Ribbed cuffs.
Unfinished raw hem. Tear out label.

Weight: 220 gsm

Size:	S	M	L	XL
Ladies size:	6/8	10/12	14/16	18/20
Chest (to fit):	30/32	32/34	34/36	36/38



BL7502

BELLA+CANVAS

JustHoods®
AWDis

JH005 AWDIs
Ladies Longline Hoodie

Jet black 80% ringspun cotton/20% polyester. Heather grey 75% cotton/25% polyester. Soft cotton faced fabric. Brushed back fleece. Drop shoulder style. Ladies fit. Three panel double fabric hood with self colour flat lace drawcord. Front pouch pocket. Long length. Long ribbed cuffs and deep ribbed hem. Twin needle stitching. Tear out label.

Weight: 280 gsm

Size:	XS	S	M	L	XL
Ladies size:	8	10	12	14	16



JH005

018 CONTRAST HOODIES

JH003

Just Hoods®
AWDis



JH003B P624

HOODS



JH003 AWDIs

Varsity Hoodie

80% ringspun cotton/20% polyester.*
Soft cotton faced fabric.
Brushed back fleece.
Drop shoulder style.
Double fabric hood with contrast inner.
Contrast flat lace drawcord.
Front pouch pocket.
Ribbed cuffs and hem.
Twin needle stitching.
Tear out label.

Weight: 280 gsm

Size:	XS [▲]	S	M	L	XL	XXL	3XL [◐]	4XL [◑]	5XL [◒]
Chest (to fit):	34	36	40	44	48	52	56	60	62

*Heather grey 75% cotton/25% polyester.

**Charcoal 52% cotton/48% polyester.

▲Available in XS. ◐Available in 3XL.

◑Available in 3XL, 4XL and 5XL.



Sedex APPROVED VEGAN



JH103

Just Hoods®
AWDis



JH022

Just Hoods®
AWDis

NEW

JH103 AWDIs

Game Day Hoodie

70% ringspun cotton/30% polyester.*

Soft cotton faced fabric. Brushed back fleece.

Drop shoulder style. Regular fit. Double fabric jersey lined hood with drawcord.

Stripe detail on sleeves. Front pouch pocket. 1x1 ribbed cuffs and hem.

Twin needle stitching. Tear out label.



Weight: 330 gsm

Size:	XS	S	M	L	XL	XXL	3XL
Chest (to fit):	32	36	40	44	48	52	56

*Heather grey 65% cotton/35% polyester.



JH022 AWDIs

Tie-Dye Hoodie

80% ringspun cotton/20% polyester.

Brushed back fleece. Drop shoulder style.

Double fabric hood with round drawcord.

Front pouch pocket. Ribbed cuffs and hem.

Twin needle stitching. Unbranded size label at neckline.

Due to the dyeing process each garment is unique.



Weight: 280 gsm

Size:	XS	S	M	L	XL	XXL
Chest (to fit):	34	36	40	44	48	52

No Label



FR841 Front Row

Unisex Striped Cuff Hoodie

70% cotton/30% polyester.

Brushed back fleece. Two panel hood. Drawcord with metal eyelets. Herringbone taped neck. Front pouch pocket.

1x1 elasticated ribbed cuffs and hem with contrast stripe detail. Tag free.



Weight: 280 gsm

Size:	XS	S	M	L	XL	XXL
Chest (to fit):	34/36	36/38	38/40	42	44/46	48



LV335 Finden & Hales

Contrast Hooded Sweatshirt

80% cotton/20% polyester.

Raglan sleeves. Two panel hood with contrast lining and drawcord.

Contrast piping on sleeves. Contrast shaped side panels.

Two front pockets. Ribbed cuffs and hem.



Weight: 300 gsm

Size:	S	M	L	XL	XXL	3XL
Chest (to fit):	36/38	38/40	42	44/46	48	50/52

Sedex



FR841

FRONT ROW & CO
EST. 1991



LV335

FINDEN & HALES



LV339 P624

Fashionfocusedstyle

Just Hoods®

AWDis



6

NEW COLOURS

Dusty Pink



Ginger Biscuit



Vanilla Milkshake



Dusty Green



Peppermint



Sky Blue



JH021
AWDIS CROSS
NECK HOODIE
PEPPERMINT
P268



JH009

Just Hoods®
AWDis



JH009B P624

JH009 AWDIs
Baseball Hoodie

80% ringspun cotton/20% polyester.*
Soft cotton faced fabric. Brushed back fleece.
Contrast raglan sleeves. Contrast double
fabric hood with flat lace drawcord.
Front pouch pocket. Ribbed cuffs and hem.
Twin needle stitching. Tear out label.

Weight: 280 gsm

Size:	S	M	L	XL	XXL
Chest (to fit):	36	40	44	48	52

*Charcoal 52% cotton/48% polyester.
**Heather grey 75% cotton/25% polyester.
▲Camo colours 70% cotton/30% polyester.

Tear Out

WRAP

Sedex

AW-APPROVED VEGAN

JH014 AWDIs
Camo Hoodie

70% ringspun cotton/30% polyester.
Soft cotton faced fabric. Brushed back fleece.
Drop shoulder style. Double fabric hood with flat lace drawcord.
Front pouch pocket. Ribbed cuffs and hem. Twin needle stitching.
Tear out label.

Weight: 280 gsm

Size:	XS	S	M	L	XL	XXL
Chest (to fit):	34	36	40	44	48	52

Tear Out

WRAP

Sedex

AW-APPROVED VEGAN

SOL'S
the fair spirit

No Label

02998

02998 SOL'S
Unisex Seattle Contrast Raglan Hoodie

Charcoal marl/black 60% cotton/40% polyester. Grey marl/french navy and grey marl/burgundy 75% cotton/20% polyester/5% viscose. White/french navy and red/french navy 80% cotton/20% polyester. Brushed back fleece. Raglan sleeves. Two panel lined hood with drawcord. Taped neck. Front pouch pocket. Ribbed cuffs and hem. Unbranded size label.

Weight: 280 gsm

Size:	XS	S	M	L
Chest (to fit):	35/36	36/38	38/40	41/42
Size:	XL	XXL	3XL	
Chest (to fit):	43/44	45/47	47/49	

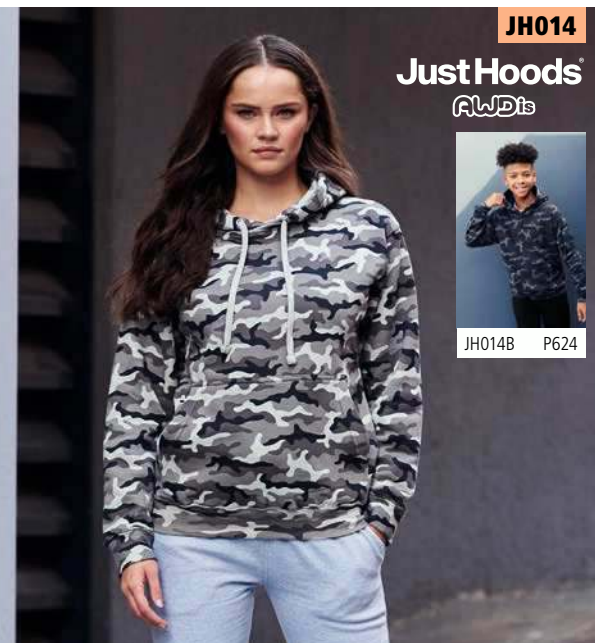


TEE JAYS
T5432 Tee Jays
Two Tone Raglan Hooded Sweatshirt

70% ringspun combed cotton/30% polyester. Brushed back fleece. Contrast raglan sleeves. Two panel lined hood. Self colour drawcord with metal tips. Branded eyelets. Front pouch pocket. Contrast ribbed cuffs and hem with elastane.

Weight: 310 gsm

Size:	S	M	L
Chest (to fit):	36/38	38/40	41/42
Size:	XL	XXL	3XL
Chest (to fit):	43/44	45/47	47/49



JH014

Just Hoods®
AWDis



JH014B P624

Just Hoods®
AWDis

JH018 AWDIs
Nautical Striped Hoodie

Heather grey stripe 90% cotton/10% viscose. Navy stripe 80% cotton/20% polyester. Soft cotton faced french terry fabric. Drop shoulder style. Relaxed fit. Double fabric hood with round lace drawcord. Taped neck. Front pouch pocket. Ribbed cuffs and hem. Tear out label.

Weight: 280 gsm

Size:	XS	S	M	L	XL	XXL
Chest (to fit):	34	36	40	44	48	52

Tear Out

WRAP

AW-APPROVED VEGAN



JH018

SF470



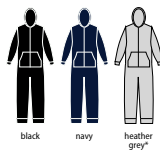
SM470 P626



SF470 SF

Unisex All In One

80% cotton/20% polyester.*
Brushed back fleece. Slim fit.
Two panel hood with single jersey lining. Taped back neck.
YKK zip front opening with chin guard. 1x1 ribbed
elasticated cuffs. Front pouch pockets with flatlock stitching.
Cuffed leg ends. Tear out label.



Weight: 280 gsm

Size:	XXS/XS	S/M	L/XL
Chest (to fit):	32/36	36/40	42/46

*Heather grey 71% cotton/23% polyester/6% viscose.



SS16 [620620]



SS82 P289



SS16B P625



SS16 Fruit of the Loom
Classic Zip Hooded Sweatshirt

80% cotton/20% polyester.*
Drop shoulder style.
Double fabric hood with flat drawcord. Taped neck.
Narrow full length covered zip.
Front pouch pockets.
Cotton/Lycra® ribbed cuffs and hem.
Twin needle stitching.
Cut out label.



Weight: White and Heather Grey 260 gsm, Cols 280 gsm

Size:	S	M	L	XL	XXL	3XL**	▲4XL▲	5XL▲
Chest (to fit):	35/37	38/40	41/43	44/46	47/49	50/52	53/55	56/58



*Dark heather 60% cotton/40% polyester. **Available in 3XL. ▲Available in 3XL, 4XL and 5XL.

K303 Kustom Kit
Klassik Zip Hooded Sweatshirt

65% polyester/35% cotton.
Brushed back jersey. Drop shoulder style.
Double fabric hood with flat lace drawcord. Taped neck and shoulders.
Full length covered metal zip. Front pouch pockets with flatlock stitching.
Self fabric cuffs and hem. Tear out label. Superwash® 60°C.



Weight: 280 gsm

Size:	XS	S	M	L	XL	XXL	3XL
Chest (to fit):	32/34	36/38	40	42	44	46/48	50/52



K303

KUSTOM KIT.





GD58 [18600]

GILDAN
Heavy Blend™



GD58B P625

GD58 Gildan Heavy Blend™ Zip Hooded Sweatshirt

50% cotton/50% polyester. Pre-shrunk. Air jet yarn, softer feel and reduced pilling. Drop shoulder style. Hood with self colour drawcord. Full length covered metal zip. Front pouch pockets. Ribbed trim with spandex at cuffs and hem. Twin needle stitching. Tear out label.

Weight: White 257 gsm, Cols 271 gsm

Size:	S	M	L	XL
Chest (to fit):	34/36	38/40	42/44	46/48
Size:	XXL	3XL*	4XL*	5XL*
Chest (to fit):	50/52	54/56	58/60	62/64

*Available in 3XL, 4XL and 5XL.



266M Russell Authentic Zip Hooded Sweatshirt

80% combed ringspun cotton/20% polyester. Cotton faced fabric. Brushed back fleece. Drop shoulder style. Double fabric hood with topstitch detail. Flat lace drawcord with buttonhole eyelets. Taped neck. Full length covered YKK zip. Front pouch pockets. Ear phone access. 1x1 ribbed cuffs and hem. Coverseamed around hood, shoulders, armholes, cuffs and hem.

Weight: 280 gsm

Size:	XS	S	M	L	XL	XXL	3XL	4XL*
Chest (to fit):	34/36	36/38	38/40	40/42	42/44	44/46	46/48	48/50

*Available in 4XL.



266M



266F P288



266B P625



JH050

Just Hoods
AWDis



JH055 P288



JH050B P625

HOODS

JH050 AWDIs Zoodie

80% ringspun cotton/20% polyester.* Soft cotton faced fabric. Brushed back fleece. Drop shoulder style. Double fabric hood with self colour drawcord. Full length covered plastic zip. Front pouch pockets. Ribbed cuffs and hem. Twin needle stitching. Tear out label.

Weight: 280 gsm

Size:	S	M	L	XL
Chest (to fit):	36	40	44	48
Size:	XXL	3XL*	4XL*	5XL*
Chest (to fit):	52	56	60	62

*Charcoal 52% cotton/48% polyester.
**Heather grey 75% cotton/25% polyester.
▲Available in 3XL, 4XL and 5XL.



ANTHEM[®]

WEAR THE LEGEND

AM01
Anthem
Organic
Hoodie
P51

AM03
Anthem
Ladies
Organic
Hoodie
P51

WITH MATCHING

NEW

AM30
Anthem
Organic
Jog Pants
P48

HOODS



ULTIMATE FEEL GOOD FASHION

SSE16 [620340]



SS82 P289

SSE16 Fruit of the Loom
Premium Zip Hooded Sweatshirt

70% cotton/30% polyester.
Drop shoulder style. Double fabric hood with drawcord.
Taped neck. Covered zip. Two front pouch pockets.
Cotton/elastane ribbed cuffs and hem.
Twin needle stitching.

Weight: Heather Grey 260 gsm, Cols 280 gsm

Size:	S	M	L	XL	XXL
Chest (to fit):	35/37	38/40	41/43	44/46	47/49



03105

SOL'S
the fair spirit



03105 SOL'S
Spike Full Zip Hooded Sweatshirt

80% ringspun cotton/20% polyester.
Cotton faced fabric. Brushed back fleece. Drop shoulder style.
Lined hood with self colour drawcord. Taped neck.
Locker patch. Full length YKK zip. Front pouch pockets.
Ribbed cuffs and hem. Unbranded size label at neckline.

Weight: 280 gsm

Size:	S	M	L	XL	XXL	3XL
Chest (to fit):	36/38	38/40	41/42	43/44	45/47	47/49

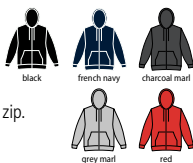


47800 SOL'S
Seven Zip Hooded Sweatshirt

50% ringspun cotton/50% polyester.
Brushed back fleece. Drop shoulder style. Jersey lined hood with flat drawcord. Taped neck. Full length covered zip.
Front pouch pockets. Ribbed cuffs and hem.

Weight: 280 gsm

Size:	S	M	L	XL	XXL	3XL
Chest (to fit):	36/38	38/40	41/42	43/44	45/47	47/49



47700 SOL'S
Unisex Silver Hooded Jacket

50% ringspun cotton/50% polyester.
Brushed fleece backing. Drop shoulder style. Lined hood with white drawcord. Full length zip with white trim.
Front pouch pockets. Ribbed cuffs and hem.

Weight: 280 gsm

Size:	XS	S	M	L	XL	XXL
Chest (to fit):	35/36	36/38	38/40	41/42	43/44	45/47



47800

SOL'S
the fair spirit



47700

SOL'S
the fair spirit



026 ZIP HOODIES

HOODS

CV3739

BELLA + CANVAS.



NEW COLOURS

CV3739 Bella+Canvas Unisex Full Zip Hoodie

52% airlume combed ringspun cotton/48% polyester.* Soft feel fabric. Drop shoulder style. Retail fit. White drawcord. Full length metal YKK zip with white trim. Front pouch pockets. Ribbed cuffs and hem. Tear out label.

Weight: DTG 270 gsm, Cols 220 gsm

Size:	XS	S	M
Chest (to fit):	31/34	34/37	38/41
Size:	L	XL	XXL
Chest (to fit):	42/45	46/49	50/53

*DTG colours 70% airlume combed ringspun cotton/30% polyester.



Tear Out



SF526



SF526 SF Unisex Slim Fit Zip Hooded Sweatshirt

60% cotton/40% polyester.* Brushed back fleece. Raglan sleeves. Two panel jersey lined hood with flat lace drawcord. Taped neck. Full length metal zip. Two front pockets. Self fabric side panels with stitched eyelet detail. Deep stretch ribbed cuffs and hem. Tear out label.



Weight: 250 gsm

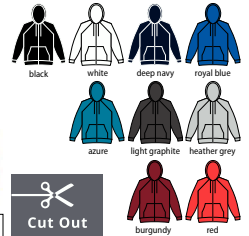
Size:	XXS	XS	S	M	L	XL	XXL
Chest (to fit):	32/34	34/36	36/38	38/40	42	44/46	48

Tear Out
ATM-APPROVED VEGAN
Sedex

*Heather grey 75% cotton/20% polyester/5% viscose.

SS122 Fruit of the Loom Lightweight Zip Hooded Sweatshirt

80% cotton/20% polyester. Raglan sleeves. Hood with self colour flat drawcord. Full length covered zip. Front pouch pockets. Cotton/Lycra® ribbed cuffs and hem. Twin needle stitching. Cut out label.



Weight: 240 gsm

Size:	S	M	L	XL	XXL
Chest (to fit):	35/37	38/40	41/43	44/46	47/49

Cut Out

SS122 [621440]



Tear Out



CV3909

BELLA+CANVAS



CV3909 Bella+Canvas

Unisex Tri-Blend Full Zip Hoodie

50% polyester/37.5% airlume combed ringspun cotton/12.5% rayon.

Soft feel fabric. Drop shoulder style. Retail fit. Full length YKK zip with cream trim. Cream drawcord. Front pouch pockets. Ribbed cuffs and hem. Tear out label.

Weight: 280 gsm



Size:	XS	S	M	L	XL	XXL
Chest (to fit):	31/34	34/37	38/41	42/45	46/49	50/53



CV3339

BELLA+CANVAS



CV3339 Bella+Canvas

Unisex Sueded Full Zip Hoodie

52% airlume combed ringspun

cotton/48% polyester.*

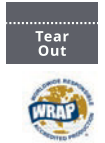
Brushed back fleece. Drop shoulder style. Retail fit. Unlined hood with self colour drawcord. Full length metal zip. Two front pockets. Ribbed cuffs and hem. Tear out label.

Weight: 230 gsm



Size:	XS	S	M	L	XL	XXL
Chest (to fit):	31/34	34/37	38/41	42/45	46/49	50/53

*Athletic heather 90% airlume combed ringspun cotton/10% polyester.



JH058 AWDIs

Unisex Heather Zoodie

52% ringspun cotton/48% polyester.

Soft feel lightweight fabric. Brushed back fleece. Drop shoulder style. Slim fit. Double fabric hood with white drawcord. Full length metal zip. Front pouch pockets. Ribbed cuffs and hem. Twin needle stitching. Tear out label.

Weight: 225 gsm



Size:	XS	S	M	L	XL	XXL
Chest (to fit):	34	36	40	44	48	52



JH057 AWDIs

Sleeveless Zoodie

80% ringspun cotton/20% polyester.*

Soft cotton faced fabric. Brushed back fleece. Double fabric hood with white drawcord. Hanging loop at back neck. Full length YKK metal zip. Ribbed bound armholes. Front pouch pockets. Ribbed hem. Twin needle stitching. Tear out label.

Weight: 280 gsm



Size:	S	M	L	XL	XXL
Chest (to fit):	36	40	44	48	52

*Charcoal 52% cotton/48% polyester. **Heather grey 75% cotton/25% polyester.



JH058

Just Hoods
AWDIs



JH057

Just Hoods
AWDIs



028 HEAVYWEIGHT ZIP HOODIES

HOODS

JH150

JustHoods
AWDis



JH150 AWDIs

Graduate Heavyweight Zoodie

70% ringspun cotton/30% polyester.*
Soft cotton faced fabric. Brushed back fleece.
Drop shoulder style. Three panel, single jersey lined hood with flat lace drawcord. Full length plastic zip with chin guard. Front pouch pockets with flatlock stitching. Ribbed cuffs and hem. Tear out label.

Weight: 330 gsm

Size:	XS	S	M	L	XL	XXL	3XL
Chest (to fit):	34	36	40	44	48	52	56

*Charcoal 55% polyester/45% cotton. **Heather grey 65% cotton/35% polyester.



Sedex **AW-APPROVED VEGAN**

T5435

TEE JAYS



T5436 P288



T5435 Tee Jays

Fashion Zip Hooded Sweatshirt

70% ringspun cotton/30% polyester.
Brushed back fleece. Raglan sleeves. Fitted style.
Two panel lined hood. Contrast striped drawcord with branded eyelets. Full length metal zip. Front pouch pockets. Ribbed cuffs and hem with elastane.

Weight: 310 gsm

Size:	S	M	L	XL	XXL
Chest (to fit):	36/38	38/40	41/42	43/44	45/47



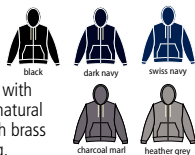
M83 Superstar by Mantis

Full Zip Hoodie

80% cotton/20% polyester.
In transition to using organic cotton. Soft peached fabric with brushed inner. Drop shoulder style. Lined hood with flat natural drawcord and brass effect tipping. Taped neck. Full length brass effect YKK zip. Front pouch pockets with flatlock stitching. Deep ribbed cuffs and hem. Tear out label.

Weight: 330 gsm

Size:	S	M	L	XL	XXL
Chest (to fit):	36/38	39/41	42/44	45/47	48/49



T5402 Tee Jays

Urban Zip Hoodie

100% ringspun combed cotton.*
Enzyme washed. Unbrushed. Raglan sleeves. Loose fashion fit.
Two panel lined hood. Contrast flat lace drawcord with branded metal eyelets. Full length contrast zip. Front pouch pockets. 2x2 ribbed cuffs and hem with elastane.

Weight: 320 gsm

Size:	S	M	L	XL	XXL	3XL
Chest (to fit):	36/38	38/40	41/42	43/44	45/47	47/49

*Heather grey 97% cotton/3% viscose.



M83

★SUPERSTAR
by mantis



M84 Online



T5402

TEE JAYS





JH052

JustHoods®
AWDis

JH052 AWDIs
Chunky Zoodie

80% ringspun cotton/20% polyester.*
Soft cotton faced fabric. Brushed back fleece.
Drop shoulder style. Double fabric hood with heather grey waffle lining. Chunky white flat lace drawcord. Full length brass zip covered by chunky ribbed detail. Side panels for fashion fit. Front pouch pockets. Deep ribbed cuffs and hem. Overlock stitching detail. Tear out label.

Weight: 400 gsm

Size:	S	M	L	XL	XXL
Chest (to fit):	36	40	44	48	52

*Charcoal 52% cotton/48% polyester. **Heather grey 75% cotton/25% polyester.



10584

SOL'S®
the fair spirit



10584 SOL'S
Unisex Sherpa Hooded Jacket

80% cotton/20% polyester.
100% polyester cream sherpa lined body and hood.
Drop shoulder style. Cream drawcord.
Full length covered zip. Front pouch pockets.
Deep ribbed cuffs and hem.

Weight: 280 gsm

Size:	XXS	XS	S	M	L	XL	XXL
Chest (to fit):	32/34	35/36	36/38	38/40	41/42	43/44	45/47



KV2306 Kariban Vintage
Zip Hooded Sweatshirt

80% cotton/20% polyester.*
Brushed back fleece. Soft peached finish. Drop shoulder style. Two panel lined hood with round natural drawcord. Metal eyelets and drawcord tips. Double herringbone twill taped neck. Full length metal zip. Front pouch pockets. Ribbed cuffs and hem. Specifically treated to appear aged. Due to the dyeing process each garment is unique. Unbranded size label at neckline.

Weight: 350 gsm

Size:	S	M	L	XL	XXL
Chest (to fit):	34/36	38	40	42	44/46

*Ash heather grey 79% cotton/20% polyester/1% viscose.



KV2312 Kariban Vintage
Sherpa Lined Hooded Sweatshirt

80% cotton/20% polyester.
100% polyester sherpa lined. Drop shoulder style. Three panel sherpa lined hood with round natural drawcord. Metal eyelets and drawcord tips. 4x4 ribbed hood edge, inner collar, cuffs and hem. Full length metal zip. Two front pockets. Specifically treated to appear aged. Due to the dyeing process each garment is unique. Unbranded size label at neckline. Zip access for decoration on left chest and side seam.

Weight: 350 gsm

Size:	S	M	L	XL	XXL
Chest (to fit):	34/36	38	40	42	44/46



KV2306

KARIBAN
Vintage



KV2312

KARIBAN
Vintage

030 CONTRAST ZIP HOODIES

HOODS

JH053

Just Hoods®
AWDis



JH053 AWDIs

Varsity Zoodie

80% ringspun cotton/20% polyester.*

Soft cotton faced fabric.

Brushed back fleece.

Double fabric hood with contrast inner.

Contrast flat lace drawcord.

Full length contrast plastic zip.

Front pouch pockets.

Ribbed cuffs and hem.

Twin needle stitching.

Tear out label.

Weight: 280 gsm

Size:	S	M	L	XL	XXL
Chest (to fit):	36	40	44	48	52

*Charcoal 52% cotton/48% polyester.

**Heather grey 75% cotton/25% polyester.



JH063

Just Hoods®
AWDis



JH063 AWDIs

Baseball Zoodie

80% ringspun cotton/20% polyester.*

Soft cotton faced fabric. Brushed back fleece.

Raglan sleeves. Contrast double fabric hood with flat lace drawcord.

Full length contrast plastic YKK zip. Contrast sleeves.

Front pouch pockets. Ribbed cuffs and hem.

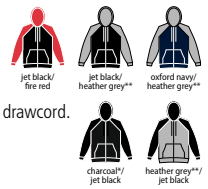
Twin needle stitching. Tear out label.

Weight: 280 gsm

Size:	S	M	L	XL	XXL
Chest (to fit):	36	40	44	48	52

*Charcoal 52% cotton/48% polyester.

**Heather grey 75% cotton/25% polyester.



LV330 Finden & Hales

Contrast Zip Hooded Sweatshirt

80% cotton/20% polyester.

Contrast lined hood and drawcord. Full length zip. Contrast panels

on shoulders, sleeves and sides. Front pouch pockets. Ribbed cuffs and hem.

Weight: 300 gsm

Size:	S	M	L	XL	XXL	3XL
Chest (to fit):	36/38	38/40	42	44/46	48	50/52



LV330

FINDEN-HALES



*Charcoal 52% cotton/48% polyester.

**Heather grey 75% cotton/25% polyester.





JH066

Just Hoods®
AWDis

JH066 AWDIs

Contrast Sports Polyester Zoodie

100% polyester.
Brushed back fleece. Raglan sleeves.
Three panel hood with contrast lining and drawcord.
Full length contrast plastic zip.
Contrast stripe on shoulders and sleeves.
Front pouch pockets.
Twin needle stitching. Tear out label.

Weight: 200 gsm

Size:	S	M	L	XL	XXL	3XL
Chest (to fit):	36	40	44	48	52	56



AW-APPROVED
VEGAN

JH051 AWDIs

Urban Varsity Zoodie

70% ringspun cotton/30% polyester.*
Soft cotton faced fabric. Brushed back fleece.
Drop shoulder style. Three panel hood with contrast single jersey fabric inner.
Chunky flat lace cream drawcord. Full length metal YKK zip with chin guard. Contrast sleeves. Front pouch pockets. Ribbed cuffs and hem with stripe detail. Tear out label.

Weight: 330 gsm

Size:	S	M	L	XL	XXL
Chest (to fit):	36	40	44	48	52

*Heather grey 65% cotton/35% polyester.



Sedex AW-APPROVED
VEGAN

JH051

Just Hoods®
AWDis



JH022
AWDIS TIE-DYE
HOODIE
BLUE CLOUD
P275

**NEW
STYLE**

Just Hoods®
AWDis



JH022
AWDIS TIE-DYE
HOODIE
GREY PINK
MARBLE
P275

JH055

Just Hoods®
AWDis



JH050 P279



JH050B P625



JH055 AWDIs

Ladies Zoodie

80% ringspun cotton/20% polyester.*
Soft cotton faced fabric.
Brushed back fleece.
Drop shoulder style. Ladies fit.
Double fabric hood with self colour drawcord.
Taped neck. Full length covered YKK plastic zip.
Front pouch pockets. Deep hem.
Ribbed cuffs and hem.
Twin needle stitching. Tear out label.

Weight: 280 gsm

Size:	XS	S	M	L	XL
Ladies size:	8	10	12	14	16

*Heather grey 75% cotton/25% polyester.



Sedex® **AWR-APPROVED VEGAN**

266F



266M P279



266B P625



266F Russell

Ladies Authentic Zip Hooded Sweatshirt

80% combed ringspun cotton/20% polyester.
Cotton faced fabric. Brushed back fleece. Drop shoulder style.
Ladies fit. Double fabric hood with topstitch detail. Flat lace drawcord with buttonhole eyelets. Taped neck. Full length covered YKK zip. Front pouch pockets. Ear phone access.
1x1 ribbed cuffs and hem. Coverseamed around hood, shoulders, armholes, cuffs and hem.



Weight: 280 gsm

Size:	XS	S	M	L	XL
Ladies size:	8	10	12	14	16
Chest (to fit):	30/32	32/34	34/36	36/38	38/40

T5436 Tee Jays

Ladies Fashion Zip Hooded Sweatshirt

70% ringspun cotton/30% polyester.
Brushed back fleece. Raglan sleeves. Fitted style.
Two panel lined hood. Contrast striped drawcord with branded eyelets. Full length metal zip. Front pouch pockets.
Ribbed cuffs and hem with elastane.



Weight: 310 gsm

Size:	S	M	L	XL	XXL
Ladies size:	8/10	10/12	12/14	14/16	16/18

T5436



T5435 P284





SS82 [621180]



SS16 P278



SS16B P625

SS82 Fruit of the Loom Premium Lady Fit Zip Hooded Jacket

70% cotton/30% polyester. Drop shoulder style. Ladies fit. Double fabric hood with self colour flat drawcord. Narrow full length covered zip. Front pouch pockets. Cotton/elastane ribbed cuffs and hem. Cut out label.

Weight: White and Heather Grey 260 gsm, Cols 280 gsm

Size:	XS	S	M	L	XL	XXL
Ladies size:	8	10	12	14	16	18
Chest (to fit):	30	32	34	36	38	40



CV3739 Bella+Canvas Unisex Full Zip Hoodie

52% airlume combed ringspun cotton/ 48% polyester.* Soft feel fabric. Drop shoulder style. Retail fit. White drawcord. Full length metal YKK zip with white trim. Front pouch pockets. Ribbed cuffs and hem. Tear out label.

Weight: DTG 270 gsm, Cols 220 gsm

Size:	XS	S	M
Chest (to fit):	31/34	34/37	38/41
Size:	L	XL	XXL
Chest (to fit):	42/45	46/49	50/53

*DTG colours 70% airlume combed ringspun cotton/30% polyester.



JH065

Just Hoods®
AWDis



HOODS

JH065 AWDIs

Ladies Cropped Zoodie

80% ringspun cotton/20% polyester.* Soft cotton faced fabric. Brushed back fleece. Drop shoulder style. Ladies relaxed fit. Double fabric hood with flat lace drawcord. Full length metal YKK zip. Cropped length. Ribbed cuffs and hem. Twin needle stitching. Tear out label.

Weight: 280 gsm

Size:	XXS	XS	S	M	L	XL
Ladies size:	6	8	10	12	14	16

*Heather grey 75% cotton/25% polyester.



{ AW APPROVED }
VEGAN



CV3739

BELLA+CANVAS



JustHoods[®] AWDs JustCool[®] AWDs JustPolos[®] AWDs JustTs[®] AWDs AWD is A ACADEMY AFD ANTHEM[®]

BABYBUGZ BagBase Beechfield ORIGINAL HEADWEAR BELLA+CANVAS BROOK TAVERNER canterbury

Comfort Grip CRAGHOPPERS DARE 2B DENNY'S LONDON ecologie. FINDEN+HALES

FLIGHT[®] of rupoons FRONTROW & CO HERITAGE CLOTHING FRUIT&LOOM. GAMEGEAR. GILDAN[®] GLENMUIR 1897

HENBURY JOSEPH ALAN KARIBAN KARIBAN Vintage ki-mood kup KUSTOM KIT

larkwood[®] LeChef PROFESSIONAL mantis one by mantis Mumbles[®] NEO BLU PEOPLE IN MOTION NL NEXT LEVEL APPAREL

ORIGINAL FNB FORTIX FORTIX PORTWEST PREMIER[®] PROACT. QUADRA

REGATTA PROFESSIONAL REGATTA PROFESSIONAL REGATTA PROFESSIONAL REGATTA PROFESSIONAL REGATTA PROFESSIONAL REGATTA PROFESSIONAL REGATTA PROFESSIONAL REGATTA PROFESSIONAL

Result SAFE-GUARD WORK-GUARD Result HEADWEAR Result GENUINE RECYCLED Result core Result urban Result winter

RTP[®] APPAREL RUSSELL RUSSELL COLLECTION RUSSELL SCHOOLGEAR SF SF SOL'S the fair spirit

So DENIM SPIRO BIKEWEAR SPIRO splashmacs SUNDERLAND OF SCOTLAND STORMTECH

SUPERSTAR by mantis TEE JAYS TOWEL CITY WARRIOR Westford Mill YOKO PILVIS